

Valuation For Insurance Purposes Prepared For

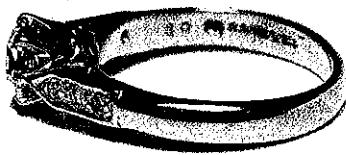


Solitaire Diamond Ring.

Total weight of 3.01 grams.

Eighteen carat yellow gold stamped 750 and hallmarked.

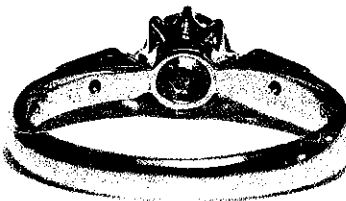
Semi round profile band 2.13 x 1.11 mm.



At each shoulder the band splits, the under section is pierced and continuous to the apex where it connects to a white gold circlet undersetting.

The upper section is white gold and bead set with three stones on each side.

A white gold eight claw rex setting at the apex.

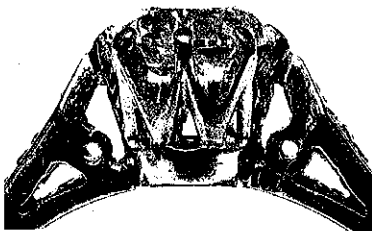


Stones: Round Brilliant Cut  
Single Cuts

Carat: RBC; 5.30 x 5.39 x 3.58 mm estimated carat weight 0.62 carats  
SC; 6 at 1.50 mm estimated carat weight 0.02 carats each  
total combined estimated carat weight 0.74 carats

Clarity: SI

Colour: I - J



**Replacement Value: \$ 6,024.00**

This valuation is based on currency and bullion rates on 15 / 04 / 2019.

Stones are not removed from settings therefore carat weights are an estimation only.

Gabriella Petrie  
Tasman Bay Jewellers  
GAA Cert Diamond Grading

Gold US\$1,289.50/Ounce, Platinum US\$892/Ounce, 1NZ\$ = 0.6770US\$, 1NZ\$ = 0.9437AU\$

