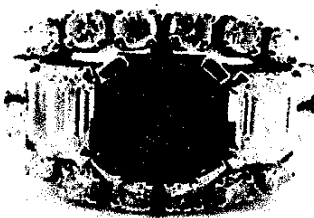


Diamond & Gem Jewellery Valuations Ltd.

- M.J.V.S Valuer
- F.G.A.A Gemmologist Diamond Grader
- DipDT Diploma diamond technology

P/F: 03 5449293
M: 021-0625417
E: rocsnz@gmail.com
238a Queen Street, RICHMOND
NELSON, NEW ZEALAND

Name: Mrs. F. Welte Prepared for: RoCS
98 Panorama Drive 238a Queen Street
Enner Glynn RICHMOND
NELSON www.rocs.co.nz



Purpose of: Insurance replacement only

Item: Emerald and diamond set ring

Description: 18ct white gold stamped 750 Kurtz, semi round profile band tapered 2.02x1.01mm ridged sides, - split flared shoulders in four bands flaring out to 7.76mm, middle two bands topped in a four claw setting, ring top cushion shaped 17.68x11.72mm set with 12 four claw settings along each side and two at the top of sides, set into middle is a four claw emerald cut diamond to either side of a four claw set square emerald cut emerald, ornate side profile with looped under setting top

Stones: Emerald Cuts: Square Emerald cut
Diamonds Emerald cut and round brilliant cut

Approximate dimensions as listed below, all grades list are assessed in settings unless stated otherwise.

Emerald
6.95x6.84x4.44mm, estimated carat weight= 1.35carats
Diamonds
2@5.02x3.5mm(0.40) estimated combined carat weight= 0.80carats
12@1.96mm(0.033), 4@2.25mm(0.05), estimated combined carat weight= 0.596carats

Colour:
Emerald - Deep vivid green (2.5g6/14)
Diamonds - FG

Clarity:
Emerald - Eye clean
Diamonds - VVS - VS

Condition:

Notes: Bright red to UV, Bright red to Chelsea filter,

Replacement retail: \$17,719.00

Prepared by Brett Grimwood
F.G.A.A.(3956), F.G.A.(812227) Gemmologist, Diamond Grader(3956)
DipDT Diamond Technologist (559),
Registered M.J.V.S. valuer.

Thursday, 19 April 2018 Reference

tail pricing based on factors of the day including precious metal prices, NZD to NZD exchange rates, and an average retail margin. These factors change over time and it is recommended you have your jewellery re-valued every two years to allow for these changes.

Weight:	7.5grams	Total gross carat weight:	carats	Total diamond carat weight:	na	Exchange rate:	\$0.67 - \$1.00NZD
Material:	\$959.00USD Ounce	Gold:	\$1293.60 USD Ounce	Platinum:	\$848.00USD Ounce	Silver:	\$17.68USD Ounce

Diamond grading scale

Colour
D-E-F-G-H-I-J-K-L-M-N-O

Clarity scale
FL-IF-VVS1-VVS2-VS1-VS2-SI1-SI2-I1-I2

The item(s) described above have been examined and the figures expressed are of my opinion. All stones have been assessed in the settings, the colours, sizes and grades are estimated within the limitations of the settings, these grades may vary if the stone is examined out of the setting with the owners permission and at their expense. The values here are expressed in New Zealand dollars and include G.S.T of 15%. Whilst all care is taken in the preparation of this valuation no liability is taken other than those of omission. This valuation is not intended for resale and is for the expressed purpose of replacement and insurance cover only.
Gold and platinum prices taken from international gold and bullion dealers kitco. F.G.A.A. - Fellow Gemmological Association of Australia.
M.J.V.S. - Member Jewellery Valuers Society of New Zealand