

139

V9647

# VALUATION FOR QUALITY VERIFICATION AND RESALE



PREPARED FOR: Dunbar Sloane  
REPORT DATE: 4th November 2019

REPORT NUMBER: 1910487/1

**Item:** AN AQUAMARINE AND WHITE SPINEL  
CLUSTER RING

**Design:** The ring features a rectangular  
Antique cushion cut natural  
Aquamarine in a four claw corner  
setting with 26 round cut synthetic  
white Spinel in bead and part  
rub-over settings forming a  
rectangular cluster with a scalloped  
outer edge, under-bezel wire support  
and joined to a narrow band with a  
flat profile. The band measures  
1.78mm in width, 1.68mm in  
thickness and the setting measures  
20.92 x 15.33 x 8.14mm.

**Manufacture:** Component and hand assembled

**Metal:** Platinum

**Stamps:** None

**Finger size:** M

**GEM type:** 1, NATURAL AQUAMARINE

**Measuring:** 15.56 x 11.05 x 6.42mm

**Total weight:** 6.81ct estimated

**Colour:** Light blue

**Clarity:** Eye clean

**Cut:** Rectangular Antique cushion cut

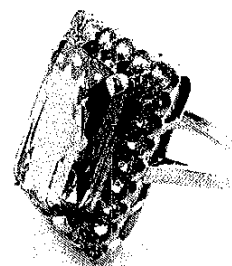
**Overall grade:** Upper commercial grade

**Comments:** Multiple surface scratches on table  
facet.

## Item notes:

**Condition:** Very good

**Weight:** 8.80 grams



**NEW RETAIL COMPARISON** \$11,000.00  
**COST:**

*Graham Oliver*

GRAHAM OLIVER, FGA, GIA Diamonds

The Jewellery Valuation Centre  
Level 2, 111 Customhouse Quay, Wellington,  
Ph: 04 499 5756  
nicholas@jvcvaluers.co.nz  
www.jvcvaluers.co.nz