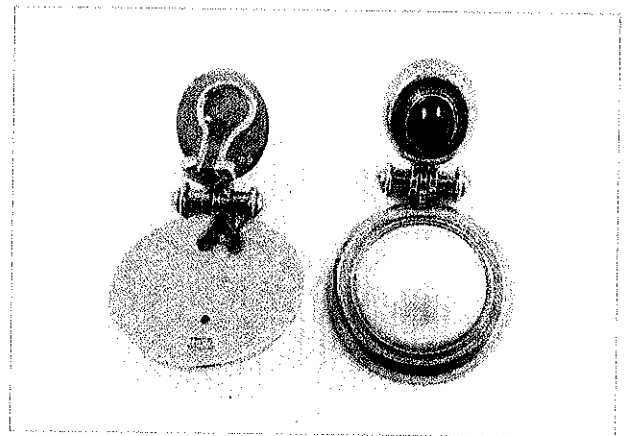
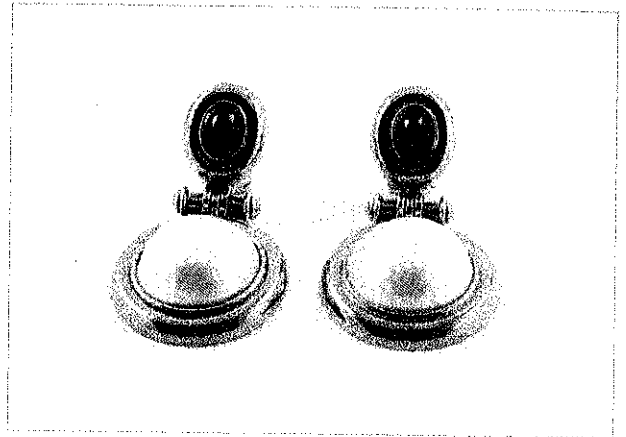


232

ITEM SCHEDULE

Valuation 2001119: Item 3 of 5

Item:	A PAIR OF MABE PEARL AND SAPPHIRE DROP EARRINGS
Design:	Each earring consists of a round Mabe Pearl in a closed back bezel setting with a rounded beveled outer rim and joined to a hinged tubular fitting and an oval cut blue Sapphire in a closed back bezel setting. The earrings are fitted with ear wire posts and hinged clip-on ear fittings. The earrings measure 41.41mm in length and the Mabe Pearl setting measures 22.39mm in diameter.
Manufacture:	Cast component and hand assembled
Metal:	18 carat yellow gold
Stamps:	18ct
PEARL type:	CULTURED MABE PEARLS
Number:	2
Size:	16.00mm diameter
Body Colour:	White
Overtone:	Faint pink
Shape:	Round
Lustre:	Very Good
Blemishes:	Very few surface blemishes
Quality grade:	A
GEM type:	2, NATURAL BLUE SAPPHIRES
Measuring:	7.00 x 5.00mm
Total weight:	2.40ct estimated
Colour:	Deep blue
Clarity:	Eye clean
Cut:	Oval cabochon cut
Overall grade:	Upper commercial grade
Item notes:	
Condition:	Very good
Weight:	25.42 grams



NEW RETAIL COMPARISON COST: \$9,500.00
