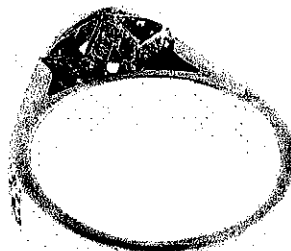


December 13, 2019

GemLab Jewellery Valuers
42 Constellation Drive
Mairangi Bay

VALUATION ON PRE-OWNED ITEM FOR SALE

Ref: GL19M119A 1/4



RING... modern diamond cluster..

Total Weight = 10.47 grams.

MOUNT.... is assembled handmade in platinum, as 950 platinum alloyed with copper, tested by XRF metal analysis, stamped "950"

11.4mm claw and grain set round cluster head with a grain set gallery, 4.8mm flat band with upswept pavé set shoulders, inside diameter measuring 17.7mm.

In good condition.

NATURAL DIAMOND... One is claw set, round brilliant cut, approx 7.3 x 4.7 mm in size, estimated 1.50 carats in weight, with quality assessed in the setting as :-

Very good make

H-I colour

SI2 clarity

Notes : Thin faceted girdle, slight blue fluorescence

* The actual weight and quality grades may differ from the estimates stated above. For greater accuracy a GemLab Diamond Quality Report is recommended - this involves thorough analysis out of the setting.

NATURAL DIAMONDS... Thirty eight are grain/pavé set, round brilliant cut, approx 1.7-1.9 mm, estimated to total 0.95 carats, with quality assessed in the setting as Very good-Good make, G-I colour, VS-SI clarity, one is graded I2 clarity.

NATURAL DIAMONDS... Twenty three are grain set, round brilliant cut, approx 1.0 mm, estimated to total 0.12 carats, of good commercial quality, one is missing, three are broken/chipped, several are abraded.

Diamond Grading Scales in descending order of quality/value

Make : Excellent - Very Good ---- Good ----- Fair ----- Poor

Colour : D--E--F -- G -- H -- I -- J --- K ---- L ---- M ---- N ---- O .. Z

Clarity : IF - VVS1 - VVS2 - VS1 - VS2 -- SI1 -- SI2 - SI2/I1 - I1 -- I2 - I3

\$15000.00 Retail Market Value

\$31000.00 New Comparison Value

THIS VALUATION REPORT is prepared for the purpose of retail comparison in the second hand retail market.

RETAIL MARKET VALUE = Our opinion of the likely approximate price this item would sell for, without compulsion or conditions, to a consumer with knowledge of all the relevant facts, in the most common retail market for similar quality, age & condition items, and given appropriate marketing & time to effect a sale.

NEW COMPARISON VALUE = Our opinion of the approx retail market value of a similar quality new item.

On request an Insurance Valuation can be prepared in the new owners name after sale.

Metals in \$US/oz : Gold = 1530, Plat = 930 ; Economics : \$NZ1 = \$US0.63 & \$AUS0.93, GST = 15 %

 Kelly Wong GIA Gemologist, MJVSNZ

42 Constellation Drive, Mairangi Bay 0632

PO Box 305299, Triton Plaza, Auckland 0757, New Zealand

Phone: +64 9 48 999 19 • Fax: +64 9 48 999 24 • info@gemlab.co.nz • www.gemlab.co.nz