



## JEWELLERY

### APPRAISAL FOR INSURANCE PURPOSES

**REF:**

**JOB NO: 29120 MAKE 24/15/13**

**JOB NO: 31098 AFTERLOSS DIAMOND**

**USDS 0.80**

**19 DECEMBER 2013**

**PLATINUM SOLTIARE DIAMOND RING:**

A all Platinum handmade Cameron Jewellery solitaire Princess cut diamond engagement ring.

**STAMPED:** PLAT *Cameron*

**SETTING:** The Princess cut diamond is set in a four corner claw tapered 'V' setting, 7.8mm high and 8.3mm on the outside diameter.

**BAND:** The slight half round band with flat sides is 4.2mm x 1.4mm thick at the back.

**SHOULDERS:** The solid band tapers to the knife edged style shoulders to 2.1mm wide x 4mm high.

**SIZE:** The ring is finger size 'K 1/2' and is NEW

**DIAMOND IDENTIFICATION:**

**QUASAR REPORT NO: 32072**

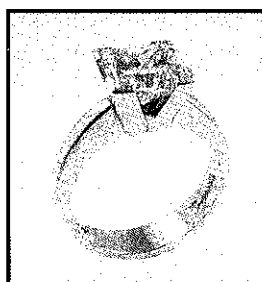
**CUT:** 1 @ 7.28mm x 7.27mm x 5.17mm Princess cut diamond

**CARAT WEIGHT:** 1 @ 2.264 carats (weighed)

**COLOUR:** G **CLARITY:** I1+ **VERY GOOD CUT**

**Total weight: 8.1 grams**

**\$28,000.00 REPLACEMENT VALUE**



*J G Cameron*  
**J G Cameron**

Values are in NZ dollars, inclusive of GST. The replacement value is our opinion of a current normal retail price for a new item of this quality. Indemnity value reflects the current retail price less any wear and tear that has occurred at the time of appraisal. Antique pieces which are not in current production are based on the price they would realistically sell for. Actual retail prices may vary from this value.

**Cameron Jewellery Limited**

REF: V# 9867

114 King Street • Palmerston North • Telephone/Facsimile: 06-359-0288  
 Email: camjem@inspire.net.nz • Website: www.cameronjewellery.co.nz