



**Dennis D. Blacklaws** G.G., C.S.M.J.A.S., Ch.Sr.Mem (N.A.J.A.)



Jeweller - Gemologist - Diamond Grader

10 Laings Road, Lower Hutt, New Zealand

Telephone & Fax 04 566 3668

Email: dennis.blacklaws@gemlink.co.nz

Website: www.gemlink.co.nz

Cert. Diamonds & Diamond Grading (GIA) Cert. Coloured Stone Grading - Evaluation & Identification (GIA)  
 Graduate Gemologist Diploma G.G.(GIA) (Gemological Institute of America) Life Member Jewellers & Watchmakers of N.Z. Inc  
 Ch.Sr.Mem (N.A.J.A.) (National Assn of Jewellery Appraisers - U.S.A.) Diploma Charter Member GIA Alumni Assn,  
 Charter Senior Member C.S.M.J.A.S. (Jewellery Appraiser Society of N.Z. Inc)

Jewellery Appraisers Society of N.Z. Inc

**PRAISAL  
JEWELLERY**

Property of \_\_\_\_\_  
 Address \_\_\_\_\_

Ref No: 17163SJ/WN17721

© Copyright 2004 Dennis Blacklaws Ltd

N.B. R.V.N.= Replacement Value New

I.V.= Indemnity Value

Date 29 June, 2005

**DESCRIPTION OF ARTICLE**

**VALUES**

**1. Cast and Assembled (5) Diamond modern type (5) Bezel and Half-Hoop design Ring.**

Ring Metal composition analysed as 18ct White gold stamped 750 Ring, set with plain, (1/4) round and tapered 2.65-2.32mmØ x 2.50-1.39mm† dimension shank, with flow-on to solid and plain design sides.

Ring set with White gold, Elevated, single *Diamond*, (4) claw and (4) wire pillar and 'Rectangular' shaped double 'Bezel' type 5.35 x 4.10mmØ x 5.05mm† dimension centre mount setting, set with (2) separate *Diamonds*, part rub-over flush set, 'Strip' type and 'Taper' shaped double 'Bezel' type 3.90 x 3.55-3.40mmØ x 3.05-2.93mm† dimension mount settings, split-level set to either side, and inset between shank ends.

Centre Diamond, (EC) Emerald cut,

1 x 4.91 x 3.39mmØ x 2.737mm† L.W. Ratio 1.448:1

Actual Stated Weight ( 1 x 0.43ct) (F-H) (VS<sub>1</sub>)

Side Diamonds, (TBC) Tapered Baguette cut,

4 x est 3.35-3.30 x 1.70-1.30mmØ x 1.50-1.40mm† L.W. Ratio 2.217:1

Est by Formula ( 4 x est 0.078-0.054ct) (G-I) (VS<sub>1</sub>-SI)

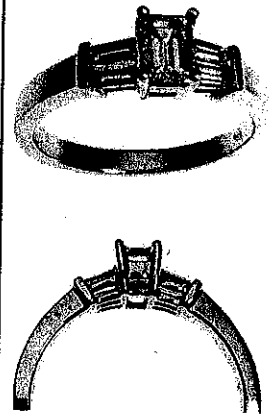
**N.B.** Diamonds graded in mounts. Diamond est.Total (0.694ct).  
 Diamonds dimension measurements estimated due to mounts.  
 Diamonds body colour Masked due to mounts.  
 Diamonds NEED to be removed from mounts for more accurate  
 Weight, Colour and Clarity grading and to identify if Clarity enhanced.

Diamonds presenting inert (Nil) and assorted (faint) weak - moderate - strong cloudy Yellowish, Bluish/Violetish and Violetish/Bluish and Bluish Fluorescent colour reaction to L.w.U.v. radiation.

Ring Total Weight (3.80grams) with Total Metal Weight (3.63grams).

Ring presenting as 'New' and Safe condition.

Finger size (M:1/2) centre L/E. Photographs (X4).



R.V.N. \$4,980.00

I.V. \$4,980.00

**Appraisal No 17721 Economical Factors for item(s) 1 - 1**

**N.B.** Exchange Rate U.S. \$...0.6998  
 Gold per oz U.S. \$...439.40  
 Platinum per oz U.S. \$...886.00  
 Total Value R.V.N. N.Z. \$4,980.00  
 I.V. N.Z. \$4,980.00

N.Z. FOUR THOUSAND NINE HUNDRED AND EIGHTY DOLLARS ONLY.

*Dennis D. Blacklaws*  
 \_\_\_\_\_  
 Dennis D. Blacklaws

"This appraisal has been prepared in conformity with generally accepted professional ethics of the Jewellery Appraisers Society of N.Z. Inc."

This Appraisal-Valuation is determined by using percentage margins for Importers, Wholesalers & Retailers. The value/s given, we consider a fair value for purpose stated, and are based on an average of the above levels. Profit margins are at the discretion of the Seller and item/s can be a matter of negotiation, and fluctuations in the exchange rate, bullion prices and stone base prices. We accept no liability for variations in valuations. The quality of the stones are estimates only except where specifically stated, the stones were removed and graded. The above values are inclusive of GST.

