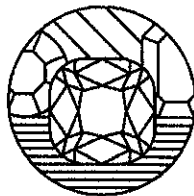


NICHOLAS TSALIS
Gemmologist & Jewellery Valuer
FGA, GAA Diamond Grading
Member of the JVSNZ



467

GRAHAM OLIVER
Gemmologist & Jewellery Valuer
FGA, GIA Diamond Grading
Member of the JVSNZ

W E L L I N G T O N

J E W E L L E R Y V A L U A T I O N S

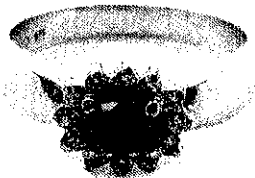
DATE COMPLETED
AUGUST 20, 2020

APPRAISAL NUMBER
6326-101934-1

DOCUMENT FUNCTION
INSURANCE APPRAISAL

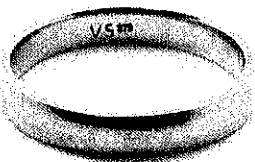
PREPARED FOR:
DUNBAR SLOANE LTD

CUSTOMER ADDRESS:
WELLINGTON, NEW ZEALAND



A BLUE SAPPHIRE AND DIAMOND RING BRIDAL SET

Cast production assembled in 9 carat white gold
Stamped: VS, 375



The Engagement ring consists of a claw set oval cut blue Sapphire and 12 claw set round brilliant cut diamonds in a wire back cluster setting and joined to a tapered hollowed out band with a half round profile and notched shoulders. The band measures 2.83-4.87mm in width, 1.25mm in thickness and the setting measures 10.30 x 8.64 x 5.88mm. Item weight: 3.90 grams.

The Wedding ring has a half round profile and measures 3.47mm in width and 1.44mm in thickness. Item weight: 3.25 grams.

Finger size: P. In very good condition.

METAL PRICES

- Gold: NZD \$2,981.73/toz.
- Silver: NZD \$41.73/toz.
- Platinum: NZD \$1,413.26/toz.
- Palladium: NZD \$3,341.37/toz.
- USD \$1.00 => NZD \$1.53

One (1) natural, oval-shaped, brilliant cut, medium-light, blue sapphire

Species:	Natural Corundum
Variety:	Natural Sapphire
Measurements:	6.10mm x 4.18mm x ~2.51mm in depth.
Estimated Weight:	0.60 ct.
Clarity:	Eye Clean - Slightly Included (Type II)

Twelve (12) round brilliant cut natural diamonds

Measurements:	1.50mm - 1.50mm in diameter x ~0.92mm in depth.
Weight Range:	0.015 ct. - 0.015 ct.
Estimated Total Weight:	0.18 ct.
Color:	H - I
Clarity:	SI1 - SI2
Cut:	Good

NZD \$2,980.00

Estimated Retail Replacement Value
*Sales taxes are included.


Nicholas Tsalis, FGA, GAA Diamond Grading Certificate
Gemmologist & Jewellery Valuer