

# New Zealand Jewellery Valuations Ltd

178



Appraisal #JT 006420038004

STORE: Retail New Stock  
Basis of Value for this Item: RV New

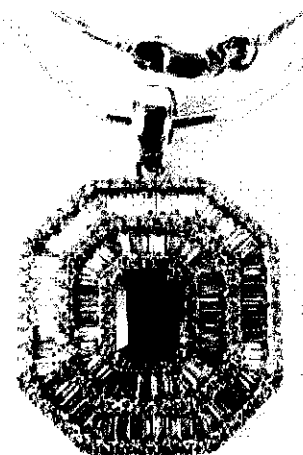
Purpose of Appraisal: Retail Market Value  
Function of Appraisal: Sale of Jewellery

One stamped 18ct white gold Modern Lady's combination cast & assembled Emerald and Diamond Cluster Pendant, with Chain with a rhodium plated finish. Condition is new.

Pendant: 26.7 mm x 24.6 mm octagonal cluster, comprising a central 4-claw setting with triple cast-in micro-bead and double channel set surround, wire pillar sides and patterned wire lining. Attached 4.0mm bale. Weight 8.5 grams.

Chain: 18ct white gold (stamped 750), machined, 50cm x 1.37mm faceted snake link with parrot clasp. Weight 8.3 grams.

Identified with markings of "750". Containing:



One claw set emerald standard step cut natural emerald, measuring 7.96 x 6.03 x 4.14mm, (depth est.) stated weight of 1.48ct., clarity is slightly included, medium light, strong, bluish green colour, (GIA bG 4/5), cut is good.

Ninety-nine cast-in set baguette cut diamonds, measuring from 2.40 x 0.40 x 0.70mm (depth est.) to 2.60 x 2.00 x 1.55mm (depth est.) stated total weight of 99 Stones = 2.13ct. Clarity of VS to SI-1, colour of F. All the corner stones have been calibre cut to fit.

One hundred sixteen micro-bead set round brilliant cut diamonds, measuring 1.20 - 1.20 x 0.72mm (depth est.) stated total weight of 116 Stones = 0.96ct. Clarity of SI-1 to I-2, colour of F, cut is good.

Total Weight of Colored Stones  
Total Weight of Diamonds  
Total Weight of Pendant, With Chain

1.48ct.  
3.09ct.  
16.80gm

Total Retail Market Value

\$ 19600.00

## Comments

Economic Factors: GST=15%, US\$/oz Gold, 1587, Plat 960, Pall 2317, Sil 18.02, NZ\$1= US\$0.64 & AU\$0.96.

Date: February 7, 2020

Jill Towers, F.G.A., D.G.A., B.Sc.  
Gemmologist/Jewellery Valuer.