



Appraisers International  
Society

# Dennis Blacklaws Ltd

LOWER HUTT:

10 Laings Road, Lower Hutt, 5010, New Zealand  
Phone & Fax (04) 566-3668

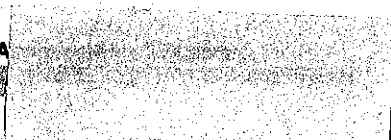
Email: dennis.blacklaws@gemlink.co.nz

Website: www.gemlink.co.nz

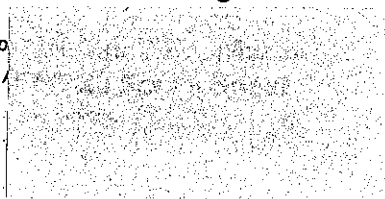
Resident Appraiser/Certified Valuer: Dennis D. Blacklaws



Gems & Jewellery Specialist - Graduate Gemologist - Advanced Valuation Specialist



Appraisal prep



© Copyright 2014 All rights reserved  
Dennis Blacklaws Ltd

Date: 10 February, 2015

## ARTICLE

1. Imported, - (Original), Period - circa 1820s (Georgian), - Cast/Fabricated, die-struck, Bespoke/Hand-Crafted, - (single) Bezel with (single) species: Beryl colour: Green variety: Emerald type: (natural) treatment: (Un-Enhanced) origin: Colombian (Bahia Muzo - Chivor Coquez) and (26) species: Diamond variety: Colourless type: (Natural) origin: Un-Known and classical/traditional style (Drop) design Locket, - with Imported, Fabricated/Cast, Assembled and classical/traditional with (solid) style (Fob).

**Fob/Locket** Metal composition analysed as Rolled gold alloy, and *un-stamped* presented with 'Fine' and 'Trace' style "Link" type "Safety-Chain", and *hinge* and 'attached' to "Assembly" towards one end.

**Locket** presented and 'attached' to Metal composition analysed as 12ct Yellow gold and 'fold-over' and 'Fancy' and 'Scroll' shaped, and 'solid' type "shackle" style setting, 'solder' and 'attached' to top of 22.00mm → x 22.50mm → x 7.22mm† dimension "Shield" shaped, "Assembly" setting, presented with "hand-carve" and 'engrave' patterned "Scroll" design 'surrounding' complete "Drop" style setting.

**Locket** presented with Yellow gold, Elevated, with single Emerald, and with part and 'Pinch' and "rub-over" flush and inset, single "Box" style presented with 'single' separate Bezel design, 'Square' and 'Taper' shaped, Tension inset, and 9.24mm → x 8.88mm → x 1.08mm† dimension central style "Assembly" mount setting.

**Locket** presented with 41.00mm → x 23.06mm → x 12.49mm† dimension "Assembly" setting, *hinged* and 'attached' to Metal composition analysed as 9ct Yellow gold alloy, presented with stamped with English (in-distinguishable) type hallmark, presented with cut-out and pierced, 'fold-over' and "Ribbon-Bow" shaped, and 'engrave' and "Scroll" patterned, "Assembly" type 29.00 mm → x 15.55-16.36mm → x 0.60-7.30mm† dimension "Fob" style setting, and presented and fitted with single *hinged* and 'wire' type brooch "Pin", and fitted with single 'fold-over' and "Safety-Lock" type "Clasp" style 'device' setting, with with Total Metal weight (3.60grams).

Central Emerald, modified, and "Octagonal/Emerald" (Step) cut;

1 x est 8.36 x 7.77mmØ x 3.41mm† L.W. Ratio 1.076:1

Est by Formula 1 x est 1.789ct

**Emerald** presenting semi-translucent Bright and very slightly Bluish/Greenish Hue with Tone (5) and Saturation (3/4) with Clarity (Vs).

GIA ColourMaster® Notation E:00:90:64 with Colour grade (7+)

GIA GemSet® colour Analysis

**Emerald** presenting Good symmetry and proportions, with abraded crown facet junctions, with High surface polish and presenting noticeable Window effect, with shallow symmetry proportions, presenting colour Banding and colour Zoning and presenting internal Healing-Fracture and a number of Positive and Negative Crystalite type and Three phase Fluid type inclusion scenes, applying (oblique lighting) and (immersion microscopy) technique, presented in mount. (View photo-micrograph)

N.B. Check Spectrometer Analysis.

ITEM 1. CONTINUED .../

CONTINUED ...//

4/11



*Dennis D. Blacklaws*  
Dennis D. Blacklaws

This Appraisal has been prepared in conformity with accepted professional standards of Appraisers International Society™ (US) The Jewellery Appraisers Society of N.Z.



Appraisers International  
Society

# Dennis Blacklaws Ltd

LOWER HUTT:

10 Laings Road, Lower Hutt, 5010, New Zealand  
Phone & Fax (04) 566-3668

Email: dennis.blacklaws@gemlink.co.nz

Website: www.gemlink.co.nz

Resident Appraiser/Certified Valuer: Dennis D. Blacklaws

Gems & Jewellery Specialist - Graduate Gemologist - Advanced Valuation Specialist



© Copyright 2014 All rights reserved  
Dennis Blacklaws Ltd

Date: 10 February, 2015

## ARTICLE

### ITEM 1. CONTINUED .../

It is an internationally recognised trade practice to treat gems of this variety by various methods to enhance the colour and/or clarity; applying immersion Microscopy technique although evidence of treatment is not immediately apparent, some may be assumed.  
Extent: Nil/Minor Stability: Stable/Unstable under normal wearing conditions. Prevalence: Never/Rarely/Commonly/Usually

**N.B.** Positive Origin Identification may alter assessed value of submitted Emerald.  
This can only be established by an International Laboratory i.e. (Gubelin) and/or (GRS/SWISSLAB) specialising in (Origin) Identification.  
For the purposes of this Appraisal the Emerald has been appraised/valued as (High-Exceptional) quality.

Centre Diamonds. (IOSRC) "irregular" shaped Old and (12) - (17) Facet and "Rose" cut;

26 x est 2.38-0.85mmØ x 0.68-0.48mm]

Est by Formula ( 26 x est 0.021-0.005ct) (H or higher) (SI-L)

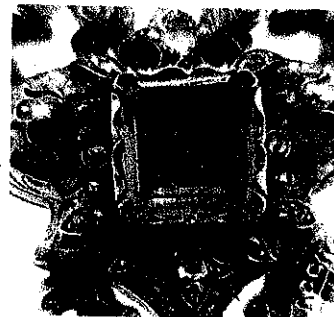
**N.B.** Emerald and Diamonds graded in mounts (*In-situ*). Diamond est Total (Est 0.338ct).  
Immersion Microscopy analysis indicates Emerald of Colombian origin.  
Emerald and Diamonds dimension measurements estimated due to mounts.  
Diamonds colour graded under an (ultraviolet-free) colour/grading environment.  
Diamonds body colour Masked due to mounts.  
Emerald and Diamonds NEED to be removed from mounts for more accurate Weight, Colour and Clarity grading and to identify if Clarity enhanced.

Diamonds presenting inert (Nil) and assorted (Faint) weak - strong cloudy - translucent Bluish/Violetish and Greenish/Bluish and Bluish Fluorescent colour reaction to L.W.U.v. radiation.

Locket Total Weight (8.80grams) with Total Metal Weight (8.37grams).  
Locket presenting Safe condition and general overall surface wear.  
Fob near as 'New' and Safe condition and general overall surface wear Photographs (X2/1.).

R.M.V.N. \$17,050.00

I.M.V. \$16,500.00



### ITEM 1. "WIKIPEDIA" REFERENCES CONTINUED...

CONTINUED ...//

5/11



*[Signature]*  
Dennis D. Blacklaws

This Appraisal has been prepared in conformity with accepted professional ethics of Appraisers International Society™ (USA) & The Jewellery Appraisers Society of N.Z. Inc.