

**Brent Weatherall Jeweller**

**153 George Street  
Dunedin**



Ph: 03 477 0411

Fax: 03 477 0412


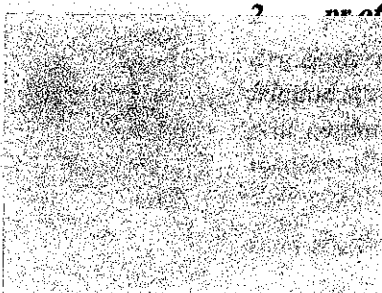

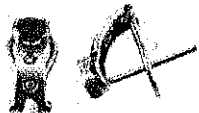
Email: info@bwj.co.nz

## Abbreviated Insurance Valuation

*For simple items of jewellery and watches that are below the clients unspecified item limit.*

Client Name:

Valuation Number: GZ10488G

Photo	Description	Value Range
253 	<b>TAIRE RING</b> assembled handmade in 18ct white gold (approx tested), with central claw and double box collet setting, 3.4mm tapered rounded shank the shoulders. Containing: 1x 8.1 x 6.3 x 4.35mm emerald cut medium bluish green emerald, heavily included, estimated weight 1.55 carats. Note - surface reaching inclusions. t: 4.31 grams Condition: Good	\$4,900.00 - \$5,300.00
254 	<b>pr of EARRINGS</b> assembled handmade in 18ct white gold (approx tested), with post and all fittings. Each is a wire clawed pear shaped collet setting stud. The a total of: 2x 8.7 x 6.3 - 6.4 x 3.75 - 4.45mm pear-shaped faceted bluish green emeralds, heavily included, estimated total weight Note - Some surface reaching inclusions. t: 2.29 grams Condition: Good	\$7,300.00 - \$7,800.00
437 	<b>TAIRE RING</b> assembled handmade in 18ct white gold (stamped: 750, tested), with tier plate claw and double box collet setting, atop a 2.9mm squared band. 1x 9.9 x 8.0mm emerald cut medium orange red garnet, of commercial t: 4.59 grams Condition: Good	\$1,550.00 - \$1,750.00
410 	<b>4 pr of EARRINGS</b> Are assembled cast in 18ct white gold (stamped: 18k, approx tested), with wire loop clip and post fittings. Each is an open ended oval shaped rubover collet setting stud, with paired countersunk grain set curved plates below. The pair contain a total of: 2x 5x4mm oval medium green past (glass) and 4x 1.3mm round colourless C.Z's. Item Weight: 2.32 grams Condition: Good	\$1,100.00 - \$1,300.00

410

**5 SOLITAIRE RING**

\$1,400.00 - \$1,600.00

is one piece cast in 18ct white gold (stamped: 18k, tested), 6.9mm tapered squared shank with raised parallel bar marquise shaped single rubover set top. Containing: 1x 5.2 x 4.2mm oval-shaped faceted medium green paste (Glass). Note - Stone damaged, hairline cracks in the mount.

Item Weight: 3.75 grams Condition: Moderate

534

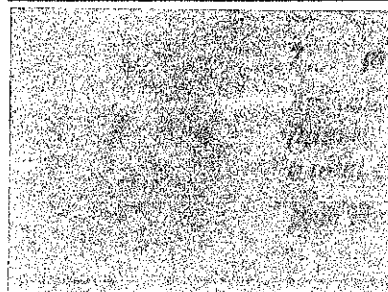
**PENDANT & CHAIN**

\$1,400.00 - \$1,600.00

is assembled in sterling silver (stamped: stg) with tapered round profile oval cable ring style links, 1.3 - 3.3mm Wide, 435mm Length. Secured with and ring clasp. The Pendant is assembled handmade in 9ct white gold (tested) with triangular shaped V contoured bail. An oval shaped spectacle over collet setting. Containing: 1x 33.7 x 21.3 x 10.8mm oval-shaped cut rose quartz.

Item Weight: 25.13 grams Condition: Good

534

**PAIR of EARRINGS**

\$1,300.00 - \$1,500.00

assembled handmade in 9ct white gold (approx tested), with hook and bead Each is a diamond shaped rubover spectacle setting drop. The pair contain: 2x 22 x 16.7 x 7.0 - 7.3mm diamond-shaped cabochon cut rose quartz.

Weight: 10.70 grams Condition: Good

**VALUERS DECLARATION** - I hereby certify that the above item(s) were personally examined by me on the date shown and the Value range is for Replacement with a new equivalent item, for the purpose of Insurance. This report does not constitute a warranty or guarantee.

**Valuer:** Glen Johnson, (G.I.A) Diamonds Graduate, Gemmologist.

02 March 2020

**Authorised signature:**

Economic Factors: \$NZ Exchange Rates US\$ 0.62 Metal Prices (NZ\$/ounce) Gold 2558.63 Silver 26.94 Platinum 1400.00