

ITEM SCHEDULE Valuation 1709498: Item 1 of 10

RING AN ART DECO STYLE DIAMOND RING

Design: The Band: Fabricated in white gold, a tapered plain half round profile with a bead set Old Rose cut diamond on each shoulder. Width: 6.30-1.52mm Thickness: 1.90-1.70mm

The Setting: Fabricated in platinum, a hexagonal cluster head with a Marquise brilliant cut diamond in a double 4 claw setting and 20 Old Mine cut diamonds in bead settings forming the cluster. The outer rims of the cluster have a milled finish and side rail support.
Dimensions: 21.89 x 11.95mm

Manufacture: Handmade

Metal: Platinum and 18 carat white gold

Stamps: PLATINUM, 18CT, ALLAN

Engraved: Hand engraved: DB9486

Finger size: N 1/2

DIAMOND: 1, MARQUISE BRILLIANT CUT

Measuring: 7.10 x 4.90 x 2.71mm

Total weight: 0.54ct estimated

Colour grade: H

Clarity grade: SI1

Girdle notes: Medium, frosted

DIAMONDS: 18, OLD MINE CUT

Size range: 5=2.40mm, 10=2.50mm, 2=2.60 x 2.90mm, 2=2.60 x 2.70mm

Total weight: 1.19ct estimated

Colour range: F-I

Averaged colour: G

Clarity range: SI1-I1

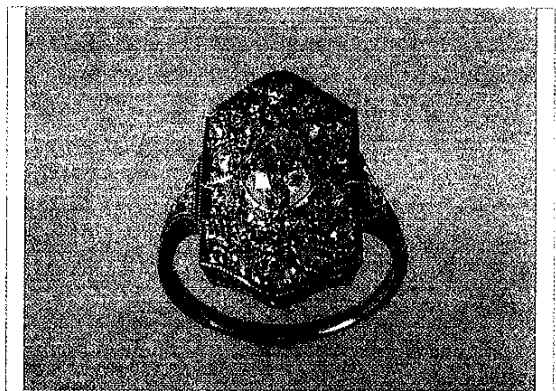
Averaged clarity: SI1

DIAMONDS: 4, OLD ROSE CUT

Total weight: 0.095ct estimated (1.50-1.90mm)

Colour range: H-I

Clarity range: SI2-I1



Item notes:

Condition: Very good

Weight: 4.72 grams

NEW REPLACEMENT COST: \$9,250.00

BERRY'S

FINE JEWELLERY WORK SHOP

99 Dixon St Wellington New Zealand
PO Box 11335 Ph: 04 3856 015 Fax:04 3856 019
Email: berrys@paradise.net.nz

Manufacturing Jewellers
Diamond Mounters
Gemmologists

Date: 09-August-2013
Valuation No: 100819
Customer No: AA385
Page: 1

Appraisal Certificate

Item Description

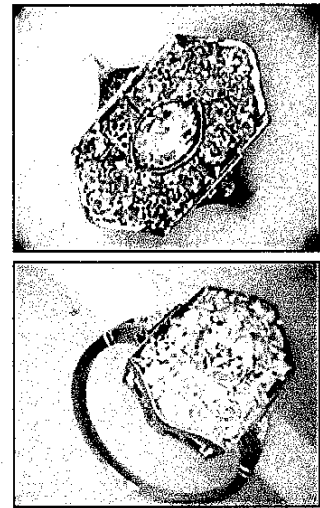
Art deco style diamond dress cluster ring

Head 22 x 12mm curved plate.
Millgrain and pave set with 20 old cut diamonds.
Centre setting low 4 double claw.
Shoulders- triangular tapered down to band, millgrain and bead set with 1 old cut diamond.
Band 1.8mm wide buff top v split under shoulder to lower bezel railing.
Size N1/2
Stamped Platinum 18k (head plate, shoulders and outer band in platinum)

Diamonds
1 x 6.8 x 4.8mm x 2.6mm deep Marque shape, brilliant faceting.
Estimated weight 0.40ct H VS2
2 x 1.8mm rose cut
18 x 0.06ct old European cut. G/H /I SI1
2 x 0.03ct old cut (in shoulders)

Total diamond weight 0.1.58ct

Total ring weight 4.7grams



Total Value \$6,380.00

Exchange rate: US\$ 0.7650 Yen 75.21
Metal Prices (US\$ ounces) : Gold 1313.55 Silver 19.87 Platinum 1440.00

The article described above have been examined and the values given are an expression of our opinion. Gemstones have not been removed from the settings for accurate assesment and all grades and weights are approximate unless otherwise stated. Whilst all care has been taken in making this valuation, no liability is accepted other than to the person to whom the certificate is given for any errors or omissions, including any liability to the person by reason of negligence. Values expressed in New Zealand dollars and based on current market conditions. Photographs are not representative of actual size.

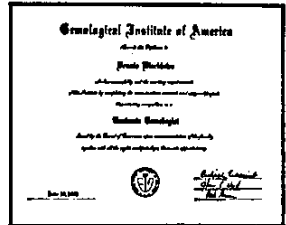
This item was valued by

Helen Grubi, FGA

NZQA Manufacturing Jeweller



GEMLINK®
DENNIS BLACKLAWS G.G., N.G.J.A., M.G.A.
 3 Laings Road, Lower Hutt. Telephone: 04-566 3668
GEMOLOGIST — DIAMOND GRADER
 (GEMOLOGICAL INST. OF AMERICA)
 Cert. Diamonds, Cert. Coloured Stones, Cert. Gemstone Identification
 Dip. Charter Member N.A.J.A., Dip. Charter Member G.I.A. Alumni Assoc.
 M.G.A., Master Gemology Assoc (U.S.A.)
 M.J.A.A.N.Z. — M.N.Z.J.A. M.G.A. (U.S.A.) N.A.J.A. (U.S.A.)
 Founder GEMLINK APPRAISERS LTD



APPRAISAL JEWELLERY

Property of

Ref No: **9486ST/WN**

Address

N.B. R.V.N. = Replacement Value New

I.V. = Indemnity Value

These estimated replacement costs are based only on estimates of the quality of the stones (unless specifically stated that the stones were removed and graded). We assume no liability with respect to any action that may be taken on the basis of the appraisal.

Date April 26, 1996

Inclusive of G.S.T

DESCRIPTION OF ARTICLE	VALUES
<p>ITEM 4 CONTINUED .../</p> <p><u>Shoulder Diamonds</u>, Oval/Cushion shaped Old Mine cut, <i>Est by Formula</i></p> <p align="center">(2 x est 0.045mc) (i.i.) (H-J)</p> <p>Diamonds of Out of Round and Shallow/Lumpy symmetry proportions with (4) Diamonds with noticeable Nick/Cavities out Girdle outlines, with all showing large off centre culets.</p> <p>N.B. Diamonds graded in mounts. Diamond est Total (Est 1.89mc) Diamonds NEED to be removed from mounts for more accurate Weight, Colour and Clarity grading and to identify if Clarity enhanced.</p> <p>Ring Total Weight (4.70grams) with Total Metal Weight (4.32grams). Ring in Safe condition. Photograph (X2) .</p>	<p align="center">R.N.V. N/A</p> <p align="center">I.V. \$8,300.00</p>



CONTINUED .../

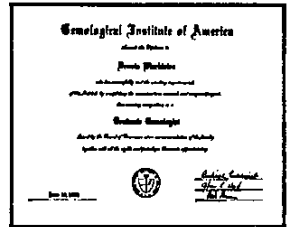
D. Blacklaws
 Appraiser: G.G., N.G.J.A., M.G.A.

This Appraisal-Valuation is determined by using percentage margins for Importers, Wholesalers & Retail levels. The value/s given, we consider a fair value for purpose stated, and are based on an average of the above levels. Profit margins are at the discretion of the Seller and item/s can be a matter of negotiation, and fluctuations in the exchange rate, bullion prices and stone base prices. We accept no liability for variations in valuations.

"This appraisal has been prepared in conformity with generally accepted professional ethics of the National Association of Jewelry Appraisers."



GEMLINK®
DENNIS BLACKLAWS G.G., N.G.J.A., M.G.A.
 3 Laings Road, Lower Hutt. Telephone: 04-566 3668
GEMOLOGIST — DIAMOND GRADER
 (GEMOLOGICAL INST. OF AMERICA)
 Cert. Diamonds, Cert. Coloured Stones, Cert. Gemstone Identification
 Dip. Charter Member N.A.J.A., Dip. Charter Member G.I.A. Alumni Assoc.
 M.G.A., Master Gemology Assoc (U.S.A.)
 M.J.A.A.N.Z. — M.N.Z.J.A. M.G.A. (U.S.A.) N.A.J.A. (U.S.A.)
 Founder GEMLINK APPRAISERS LTD



APPRAISAL JEWELLERY

Property of _____

Ref No: 9486ST/WN

Address _____

N.B. R.V.N. = Replacement Value New

I.V. = Indemnity Value

These estimated replacement costs are based only on estimates of the quality of the stones (unless specifically stated that the stones were removed and graded). We assume no liability with respect to any action that may be taken on the basis of the appraisal.

Date April 26, 1996

Inclusive of G.S.T

DESCRIPTION OF ARTICLE	VALUES
<p>4. Hand-Made (23) Diamond traditional Victorian antique Cluster ring.</p> <p>Electronic digital metal tested All Platinum Ring, set with plain, (1/2) round and tapered, (2.05-1.62 x 2.10-1.20mm) shank, with flow-on to single <i>Diamonds</i>, low bead Pave' grain illusion set, cut-out 'Triangular' shaped mount setting, set to either side..</p> <p>Ring set with Elevated, single <i>Diamond</i>, (4) double claw, shallow, Navette shaped centre Coronet mount setting, set with (10) separate <i>Diamonds</i>, low bead Pave' flush illusion Millegrain set to either side of centre, with settings set on top of oval and curved shaped Plate mount setting, set on top of plain and cut-out base under-rail frame setting.</p> <p><u>Centre Diamond</u>, Marquise shaped Early Brilliant cut,</p> <p align="center">(1 x est 7.00 x 4.70 x 2.70mm) L.W. Ratio 1.48:1 Est by Formula</p> <p align="center">(1 x est 0.50mc) (V.s.2.) (I-K)</p> <p><u>Surround Diamonds</u>, Old European cut, <i>Est by Formula</i></p> <p align="center">(2 x est 0.10mc)</p> <p align="center">(16 x est 0.08mc) (V.s.1.-i.1.) (I-K)</p> <p><u>Old Rose cut</u>,</p> <p align="center">(2 x est 1.50-1.60mm)</p>	

ITEM 4. CONTINUED ...!

Dennis Blacklaws
 Appraiser: G.G., N.G.J.A., M.G.A.

This Appraisal-Valuation is determined by using percentage margins for Importers, Wholesalers & Retail levels. The value/s given, we consider a fair value for purpose stated, and are based on an average of the above levels. Profit margins are at the discretion of the Seller and item/s can be a matter of negotiation, and fluctuations in the exchange rate, bullion prices and stone base prices. We accept no liability for variations in valuations.

"This appraisal has been prepared in conformity with generally accepted professional ethics of the National Association of Jewelry Appraisers."