

517

50967

CYNTHIA CAHILL JEWELLERY VALUER

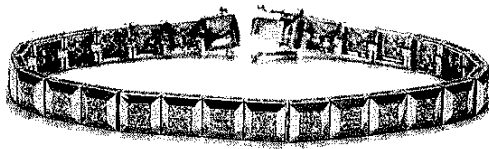
P.O.Box 48189 Blockhouse Bay Auckland Ph (09) 623 1923 021 1162896

Gemmologist * Member of Jewellery Valuers Society Inc.

Email: cynthia.cahill@jewelleryvaluations.net.nz



To Whom It May Concern
KG674/1
Auckland
23rd September 2011
CC14446



JEWELLERY VALUATION

18ct White Gold Princess Cut Diamond Bracelet

Weight: 24.0 grams

Description: 18ct white gold (stamped 750) bracelet consisting of twenty-six x 6.5mm square links, each containing four princess cut diamonds, pave set in a wide rubover square (total of 104). Push in square clasp with two safety clips.

Diamonds: 104 x 1.8-2.0mm square princess cut diamonds

Weight: 3.83ct stated total weight (stamped on metal)

Grading: Colour: GH Clarity: SI1-SI2

NB: All weights and gradings are estimated in the setting unless stated otherwise.

INSURANCE REPLACEMENT VALUE:

\$14000.00

Insurance replacement means to restore the claimant to that position before the loss.

The value is our opinion of a current normal retail asking price for an item of this quality. It is based on current wholesale prices plus the normal retail mark-up for items of this nature. Actual retail prices may vary from this value. Items are valued in their current condition, deductions may have been made for wear and tear.

Antique, and items that are not currently in production, are at the value they would realistically cost in open market situation between a willing seller and a willing buyer.

Please note that insurance valuations are not valid for re-selling purposes

Metals in US\$ /oz : Gold = 1657 Plat = 1608 Economic : \$NZ1 = \$US0.80 GST = 15.0%

Cynthia Cahill

F.G.A.(distinction) London; A.G. (Thailand); MJVS
JEWELLERY VALUER

