

521 50967
New Zealand Jewellery Valuations Ltd



Appraisal #JT 006419030004

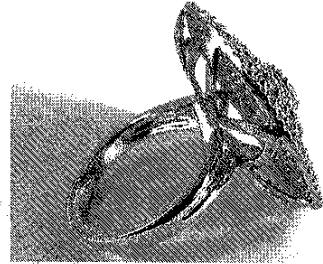
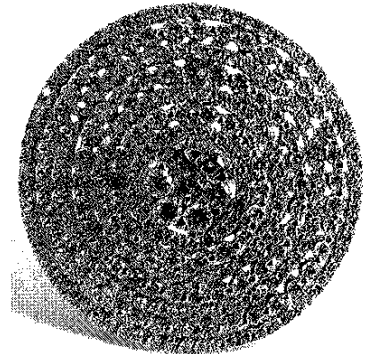
STORE: Retail New Stock
Basis of Value for this Item: RV New

Purpose of Appraisal: **Retail Market Value**
Function of Appraisal: **Sale of Jewellery**

One stamped 18ct white gold Modern Lady's combination cast & assembled Diamond Cluster Ring with a rhodium plated finish. Condition is new. 3.4 x 2.8 mm rounded shank with forked shoulders that form the underrails. At the front is a large circular 27.6 mm cluster; comprising a central cluster and seven rows of alternating micro-claw and micro-bead surround settings, star/petal lining at the back.

Identified with markings of "K18750 D247". Containing:

Two hundred sixty-four cast-in set round brilliant cut diamonds, measuring 2.50 - 1.10 x 1.08mm (depth est.) stated total weight of 264 Stones = 2.47ct. (1 approx 2.5mm, 6 approx 2.1mm, 257 approx 1.1mm). Some I2 clarity..



Clarity	SI to I-1
Colour	F - G
Cut	Good

Total Weight of Diamonds
Total Weight of Ring

2.47ct.
10.60gm


Total Retail Market Value

\$ 10800.00

Comments

Economic Factors: GST=15%, US\$/oz Gold, 1280, Plat 798, Pall 1382, Sil 15.30, NZ\$1= US\$0.67 & AU\$0.94.

Date: January 30, 2019



Jill Towers, F.G.A., D.G.A., B.Sc.
Gemmologist/Jewellery Valuer.