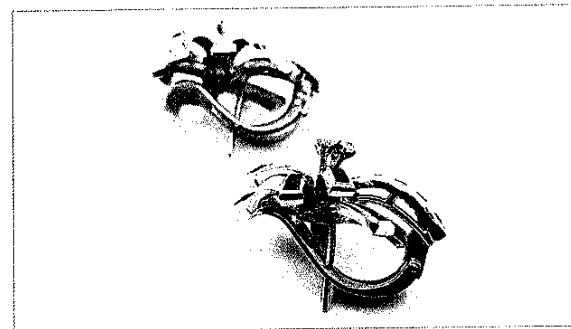
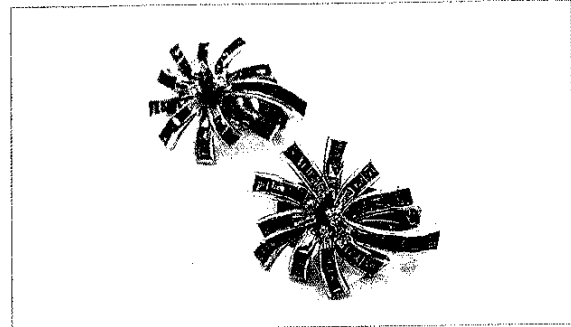



Gemmologists Report - an independent expert assessment

Item:	RUBY & DIAMOND EARRINGS
Design:	A pair of flora style earrings, with three central raised claw settings and surrounding tapered channel-set rows
Manufacture:	Custom made
Metal:	10 carat white gold
Stamps:	14K
Finishing:	Polished, rhodium plated
Fittings:	Base metal post and hinged-back fittings
Overall size:	24.0 x 19.4 mm
GEM type:	RUBY
Number and Cut:	66, assorted baguette and square mixed cut
Calibrated size:	2.00 x 1.50 - 2.50 x 2.00 mm (averaged)
Total weight:	3.5 ct
ISCC colour:	Moderate Purplish Red
Overall grade:	Commercial
Comments:	Several rubies are chipped/damaged
DIAMONDS:	6, single cut. 1.60 mm, TDW 0.10 ct, commercial quality
Item notes:	
Condition:	Good
Weight:	10.16 grams



GEMMOLOGISTS REPORT:

The item described in this report has been examined using current best practice methods and standard gemmological equipment. My reported conclusions are true and correct to the best of my knowledge. I have provided an objective opinion and I have no financial interest in the subject property and no personal interest or bias with respect to the parties involved.



KATA GRANIC, FGA, GIA Diamonds Graduate

REPORT NO: 2010464/4