



© 2018 Advanced Gem Laboratory Ltd

Internationally Certified Jewellery Appraisers and Gemologists

Ref No. **AGL57677**

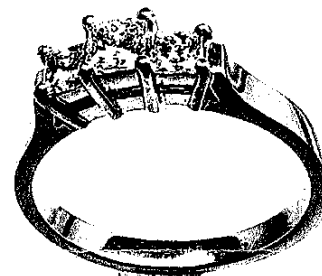
5 October, 2018

Appraisal for Pre-Owned Item for sale

Agent **Advanced Gem Laboratory**
2H Canterbury Arcade
170 Queen St
Auckland
(09) 377-4974

Client:

Economic Factors NZD\$ = USD\$0.65 Gold = USD\$1,200.69 Plat = USD\$826.00 GST Incl 15%



- 1. Item:** A 3 Diamond ring.
- Manufacture:** Appraised as, two piece cast, assembled, hand finished and set.
- Marked with:** Not marked as metal quality, AGL's opinion is metal tested as 18ct yellow gold with white gold as the settings, with a rhodium finish.
- Description:** It has the main diamond in a 4x claw square, closed backed double bezel setting, with the side diamonds in smaller and lower settings. All are contained by short under rails and the flat topped, flow up shoulders, integrated as part of the very softly rounded flat sided shank.

Finger size: J ½

Condition: Has been recently polished and settings rhodium plated. Shows no obvious wear. Gems all are currently secure.

Diamond: (1) Princess cut. No information supplied. Appraised as seen while set*
Approx. Measurements 3.48 x 3.34mmØ. Weight Calculated as 0.25 carats.
Estimated Mounted: **Colour: H-I. Clarity: VS1. Cut Grade: Good/Fancy.**

Diamonds: (2) Princess cut. No information supplied. Appraised as seen while set*
Approx. Measurements 2.83mm x 2.85mmØ Total Weight Calculated as 0.25 carats.
Estimated Mounted: **Colour: H-I. Clarity: VS1-2. Cut Grade: Good/Fancy.**

The Diamond's Total Estimated Weight is 0.50cts.

*AGL note: Any gem information, i.e. Measurements, Weights and Grades, if not supplied, are estimated. Information formally supplied may have been used, if mentioned. As gems and diamonds are normally graded loose for accuracy, Weight, Colour and Clarity grades, if assessed in the settings, may differ if seen loose. If information was supplied to AGL and was requested to be used, it is the supplier who must guarantee such information.

Items Total weight 3.2grams, (including gems), with total metal weight estimated as 3.09grams.

Market Value	\$2,350.00
Replacement Value New	\$3,900.00

NB: 'Market Value' is our opinion of the amount the item could achieve between a willing buyer and a willing seller if it were sold on the second hand market, neither being under any pressure or compulsion to buy or sell.

The estimated 'Replacement Value New' is our opinion of a retail asking price of a similar 'new' item, with prevailing economic factors as listed at this date, while there are no changes to economic or other prevailing 'Market Forces'

R. H. Park GG (GIA),
JASNZ Jewellery Appraisers Society NZ. (Snr Charter Member)
AISCV-AVS, (Appraisers International Society Cert. Valuer. Reg# 10)

This appraisal expresses the opinion of a value, for the purpose stated only, as assessed by the appraiser/s whose signature/s appear/s on the document, at the date it was produced. It has been prepared, using non-destructive methods, and any acceptable information, if supplied, as guaranteed by the supplier, or the person/s who has/have requested the appraisal. It was prepared, using the stated, and/or tested, quality of metal, weights and grade range of gems that are set in it, only if supplied. If not supplied, they will represent our opinion only, graded and measured, while in the setting/s. The appraised value, does not imply any 'warranty, or a guarantee', from Advanced Gem Laboratory (AGL), that is the responsibility of the supplier or end reseller. Neither AGL, nor its employees, are responsible for any omissions, errors or inaccuracy which might become apparent within this appraisal at a future date. These may be from later examination or certification loose, on any presently set gems, or for any other reasons not noted at this time.



Advanced Gem Laboratory Ltd.
211 Canterbury Arcade
170 Queen St. Auckland 1010
New Zealand
Tel: (64) 9 377 4874
www.advancedgemlab.co.nz

© 2018 Advanced Gem Laboratory Ltd

Internationally Certified Jewellery Appraisers and Gemologists

Ref No. AGL57677

5 October, 2018

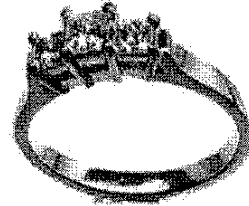
Appraisal for Pre-Owned Item for sale

Agent Advanced Gem Laboratory
211 Canterbury Arcade
170 Queen St
Auckland
(09) 377-4974

Client:

Economic Factors NZD\$ = USD\$0.65 Gold = USD\$1,200.00 Plat = USD\$226.00 GST Incl 15%

1. Item: A 3 Diamond ring.
Manufacture: Appraised as, two piece cast, assembled, hand finished and set.
Marked with: Not marked as metal quality, AGL's opinion is metal tested as 18ct yellow gold with white gold as the settings, with a rhodium finish.
Description: It has the main diamond in a 4x claw square, closed backed double bezel setting, with the side diamonds in smaller and lower settings. All are contained by short under rails and the flat topped, flow up shoulders, integrated as part of the very softly rounded flat sided shank.



Finger size: J 3/4

Condition: Has been recently polished and settings rhodium plated. Shows no obvious wear. Gems all are currently secure.

Diamond: (1) Princess cut. No information supplied. Appraised as seen while set*
Approx. Measurements: 3.48 x 3.34mmØ. Weight: Calculated as 0.25 carats.
Estimated Mounted: Colour: H-I. Clarity: VS1. Cut Grade: Good/Fancy.

Diamonds: (2) Princess cut. No information supplied. Appraised as seen while set*
Approx. Measurements: 2.83mm x 2.85mmØ Total Weight: Calculated as 0.25 carats.
Estimated Mounted: Colour: H-I. Clarity: VS1-2. Cut Grade: Good/Fancy.

The Diamond's Total Estimated Weight is 0.50cts.

*AGL note: Any gem information, i.e. Measurements, Weights and Grades, if not supplied, are estimated. Information formally supplied may have been used, if mentioned. As gems and diamonds are normally graded loose for accuracy, Weight, Colour and Clarity grades, if assessed in the settings, may differ if seen loose. If information was supplied to AGL and was requested to be used, it is the supplier who must guarantee such information.

Items Total weight: 3.2grams, (including gems), with total metal weight estimated as 3.09grams.

Market Value \$2,350.00
Replacement Value New \$3,900.00

NB: 'Market Value' is our opinion of the amount the item could achieve between a willing buyer and a willing seller if it were sold on the second hand market, neither being under any pressure or compulsion to buy or sell.

The estimated 'Replacement Value New' is our opinion of a retail asking price of a similar 'new' item, with prevailing economic factors as listed at this date, while there are no changes to economic or other prevailing 'Market Forces'

R. H. Park GG (GIA)
JASNZ Jewellery Appraisers Society NZ. (Snr Charter Member)
AISCVA, (Appraisers International Society Cert. Valuer, Regd 10)

This appraisal expresses the opinion of a value, for the purpose stated only, as assessed by the appraiser/s whose signature/s appear/s on the document, at the date it was produced. It has been prepared, using non-destructive methods, and any acceptable information, if supplied, as guaranteed by the supplier, or the person/s who has/have requested the appraisal. It was prepared, using the stated, and/or tested, quality of metal, weights and grade range of gems that are set in it, only if supplied. If not supplied, they will represent our opinion only, graded and measured, while in the setting/s. The appraised value, does not imply any 'warranty, or a guarantee', from Advanced Gem Laboratory (AGL), that is the responsibility of the supplier or end reseller. Neither AGL, nor its employees, are responsible for any omissions, errors or inaccuracy which might become apparent within this appraisal at a future date. These may be from later examination or certification losses, on any presently set gems, or for any other reasons not noted at this time.

PTO