



Appraisers International Society

Dennis Blacklaws Ltd

LOWER HUTT:

10 Laings Road, Lower Hutt, 5010, New Zealand
Phone & Fax (04) 566-3868

Email: dennis.blacklaws@gemlink.co.nz Website: www.gemlink.co.nz

Resident Appraiser/Certified Valuer: Dennis D. Blacklaws

Gems & Jewellery Specialist - Graduate Gemologist - Advanced Valuation Specialist



Appraisal prepared for

Address

AppraisalPlus DBL06001

Ref No: 15090DB/LH24076

© Copyright 2017 All rights reserved
Dennis Blacklaws Ltd

Date: 5 February, 2018

ARTICLE

3. Imported, Branded, Cast/Fabricated, Hand-Crafted,- (single) Bezel with (single) species; Quartz variety; Amethyst synthesis: (Natural) object: (faceted gemstone) phenomena: transparent treatment: (Non-Enhanced) origin: North America Switzerland Africa Sri-Lanka Russia (Urals) (unknown) and (12) species: Diamond variety: Colourless synthesis: (Natural) object: (faceted) treatment: (Non-Enhanced) origin: Un-Known with avant-garde and contemporary/modernist style (Half-Hoop) design Ring.

Ring Metal composition analysed as 18ct Yellow gold and Rhodium-Plated on top of White gold alloy, and stamped with 750 style hall/mark, and presented with plain, flat and tapered, 2.61mm→ x 2.34mm→ x 1.56-1.28mm† dimension 'polish-finish' style shank.

Ring presented with Yellow gold, flow-on to cut-out and pierced, plain and 'Inverted' to "Point" shaped, 'solid' and "Buttress" style "shoulder" setting, placed and applied to either side.

Ring presented with Rhodium-Plated on top of White gold, with (6) (single) and separate Diamonds, and (6) x (3) claw and (6) x (3) 'wire' type pillar, and flush and inset, and cut-out and "in-situ" with "Triangular" shaped, "pierced-back" and "Plate" type "Assembly" mount style setting, applied across top of White gold, with (5) separate "wire" type "cage-back" style 'base' and 3.62mm† height setting, and 'split-level' and placed and applied across top of either side.

Ring presented with Rhodium-Plated on top of White gold, Elevated, with (1) (single) and separate Amethyst, with (4) claw and (4) pillar, flush and inset, cut-out and pierced, "in-situ" and 10.52mm→ x 8.94mm→ x 6.42mm† dimension and, 'double' separate Bezel design, "Rectangular" and "Taper" shaped, Tension inset, "Box" type central style mount "Assembly" setting, inset between shank ends.

Centre Amethyst, modified, and "Octagonal/Emerald" shaped, mixed cut;

1 x est 10.13 x 8.12mmØ x 5.87mm† L.W. Ratio 1.248:1

Est by Formula 1 x est 3.815ct

(1) (single) and (Natural) Amethyst presenting semi-transparent/translucent (vivid) and (intense) Purplish/Violetish - Purple/Violetish Hue, with Tone (5-7) with Saturation (2-4) and Clarity (SI).

GIA GemSet® colour Analysis

Amethyst presenting Good symmetry and proportions, with minor abraded crown facet junctions, presenting Colour Banding and Colour Zoning and slight Window effect, and presenting High surface polish, presenting multi-phase secondary syngenetic Positive and Negative Crystalites and Actinolite Goethite and presenting Brazil-Twinning effect under crossed-Nicol prisms (Polariscope) type inclusion scenes, and presented in mount.

N.B. Check Spectrometer Analysis.

With the mass production of synthetic twinned Amethyst, we are unable to distinguish if of Natural or of (synthetic) origin unless natural inclusions are Microscopic visible. Laser tomography is currently the most definite method of determination and is unavailable in N.Z. For the purposes of this appraisal Natural origin is assumed.

N.B. Statement/s of "Geographical Origin" included within this Appraisal are submitted by 'expert-opinion' including accumulative and analytical "Observations" and "Data" and the experience of the practitioner.

ITEM 3. CONTINUED .../

CONTINUED ...//

10/27



EDINBURGH ASSAY OFFICE



GIA GEMOLOGICAL INSTITUTE OF AMERICA

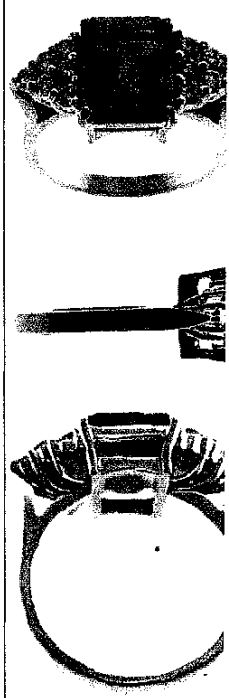


THE NATIONAL ASSOCIATION OF JEWELLERY APPRAISERS



Dennis D. Blacklaws
Dennis D. Blacklaws

This Appraisal has been prepared in conformity with accepted professional etr of Appraisers International Society™ (US: The Jewellery Appraisers Society of N.Z.





Appraisers International Society

Dennis Blacklaws Ltd

LOWER HUTT: 10 Laings Road, Lower Hutt, 5010, New Zealand
Phone & Fax (04) 566-3688

Email: dennis.blacklaws@gemlink.co.nz Website: www.gemlink.co.nz

Resident Appraiser/Certified Valuer: Dennis D. Blacklaws



Gems & Jewellery Specialist - Graduate Gemologist - Advanced Valuation Specialist

Appraisal prepared for
Address

AppraisalPlus DBL06001
Ref No 15090DB/LH24076

© Copyright 2017 All rights reserved
Dennis Blacklaws Ltd

Date: 5 February, 2018

ARTICLE

ITEM 3. CONTINUED .../

Side Diamonds, (MRSBC) modern, and (Round) shaped "Brilliant" cut;

12 x est 2.25-2.23mmØ x 1.35-1.30mm†

Est by Formula (12 x est 0.042-0.040ct) (H or Higher) (VSI-SI)

N.B. A number of "Random" presented Diamonds have by application and "In-situ" and applied type examination and analysis using "The Diamond Trading Co" (V2.03) Diamond-Sure™ screening "Instrument" has indicated a PASS result for "Natural-Untreated" Diamonds.

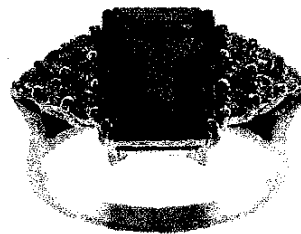
N.B. Amethyst and Diamonds graded in mounts (*in-situ*). Diamonds est Total (Est 0.492ct). Immersion Microscopy analysis indicates Amethyst of *un-known* origin. Amethyst length← & width→ & depth† and Diamonds diameterØ & depth† dimension measurements estimated due to mounts. Diamonds colour graded under an (ultraviolet-free) colour/grading environment. Diamonds body colour Masked due to mounts. (MRSBC) Diamonds of G.I.A. Good cut/grade. Amethyst and Diamonds NEED to be removed from mounts for more accurate Weight, Colour and Clarity grading and to identify if Clarity enhanced.

Diamonds presenting inert (*Nil*) and (*Faint*) weak and cloudy - translucent, and Bluish/Violetish and Fluorescent colour reaction to L.w.U.v. radiation.

Ring Total Weight (7.00grams) with Total Metal Weight (6.14grams).
Ring presenting as Safe condition and general overall surface wear.
Finger size (O) centre Photographs (X2/1.).

R.M.V.N. \$5,050.00

I.M.V. \$4,660.00



CONTINUED ...//

11/27



EDINBURGH ASSAY OFFICE



GIA
GEMOLOGICAL
INSTITUTE OF
AMERICA



THE NATIONAL ASSOCIATION
OF JEWELLERY APPRAISERS



Dennis D. Blacklaws
Dennis D. Blacklaws

This Appraisal has been prepared in conformity with accepted professional ethics of Appraisers International Society™ (USA) & The Jewellery Appraisers Society of N.Z. Inc