

JEWELLERY APPRAISAL

635

~~1 X SAPPHIRE SPREY BROOCH~~

Set in 18ct yellow gold, leaf and flower pattern
 Cast and hand finished
 The brooch is 55 x 35mm, engraved leaf
 and stem at the base, fine wire flower
 The sapphires are 2mm round, deep blue,
 seven stones in total individually claw set
 The brooch has a metal pin and a roller safety catch
 Weight 14.11gms
 Condition new

✓ NEW REPLACEMENT

\$ 2,450.00

~~1 X OVAL ANTIQUE STYLED BROOCH~~

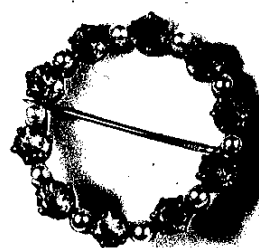
52 x 30mm, set in 9ct yellow gold
 Very fine engraved leaves superimposed
 on an outer scallop pattern rim
 The central stone is an oval mixed brilliant cut
 imitation gemstone, fine orange/brown colour,
 26 x 18mm, rub over set
 The brooch has a metal pin and a roller safety catch
 Condition new

✓ NEW REPLACEMENT

\$ 1,295.00

1 X AMETHYST AND PEARL BROOCH

9ct yellow gold, English made, circular at 30mm
 The brooch is made up of individual claw settings
 containing ten 3.5mm round amethysts,
 mixed brilliant cuts, of good colour
 Interspaced by ten peg set 2.6mm cultured pearls
 of good grade, set alternatively
 The brooch has a metal pin and a safety roller catch
 Weight 5.29gms
 Condition excellent



✓ NEW REPLACEMENT

\$ 1,295.00

(See attached photographs)

\$US-\$NZ 0.4160

Gold \$US292

SIGNED:

NEW REPLACEMENT TOTAL \$ 7,610.00
 INDEMNITY TOTAL \$

APPRAISER Graham Oliver F.G.A. Gemologist
 SEE OVERLEAF FOR CONDITIONS RELATING TO THIS VALUATION