



Dennis Blacklaws Ltd

LOWER HUTT:

10 Laings Road, Lower Hutt, 5010, New Zealand
Phone & Fax (04) 566-3668

Email: dennis.blacklaws@gemlink.co.nz Website: www.gemlink.co.nz

Resident Appraiser/Valuer: Dennis D. Blacklaws

Gems & Jewellery Specialist - Appraiser/Valuer - Graduate Gemologist



Appraisal prepared for
Address



AppraisalPlus DBL06001

Ref No: 20723DB/LH24667

© Copyright 2020 All rights reserved
Dennis Blacklaws Ltd

Date: 25 June, 2020

ARTICLE

4. (Non-Original) Component/Fabricated, Bespoke/Hand-Crafted, (single) Bezel, - with (3) species: Diamond variety: Colourless type: (Natural) treatment: (Non-enhanced) synthesis: (Natural - Earth mined) and traditional/classical and (Art-Deco) style (Bar) design Brooch.

Brooch Metal composition analysed as 18ct White gold alloy, and un-stamped with hall/marks and Guild/marks.

Brooch presented with White gold, with single 'wire' type brooch 'Pin' and fitted with single 'fold-over' and 'Safety-Lock' design 'device' type 'Assembly'.

Brooch presented with White gold, with Elevated, with (1) (single) and separate Diamond, with "rub-over" flush and "Millegrain" inset, cut-out and pierced, "In-situ" 3.24mmØ x 1.40mm† dimension 'single' separate "Bezel" design, 'Round' shaped, 'Tension' inset, type 'split-level' and central style mount "Assembly" setting.

Brooch presented with White gold, Elevated, with (1) (single) and separate Diamond, with 'part' and "rub-over" with low bead Pavé flush and 'Tension' inset type "Assembly" style mount setting, and "Plaque" style mount "Assembly" setting.

Brooch presented with "Assembly" setting applied and placed to across top of cut-out and pierced, "In-situ" and "carve" and 'engrave' patterned 'part' and "Scroll" and "Bead" pattern, with 'Rectangular' and 'semi-scallop' and 'dome' shaped, with 13.76mm→ x 6.31-4.01mm← x 0.61mm† dimension setting.

Brooch setting placed across top of cut-out and pierced, "In-situ" and 'mirror-image' and "under-rail" style 1.72mm† 'height' type 'base' setting, inset and applied in between plain and 'Flat' and 'Taper' shaped, with 19.48mm→ x 1.81-0.89mm← x 1.63-1.53mm† dimension 'knife-edge' and "Bar" style "Assembly" setting, and applied and placed to and fitted to either side.

Centre Diamond, (MOEC) modified and (Old) "European" cut;

1 x est 2.42 x 2.40mmØ x 1.23mm† L.W. Ratio 1.008:1

Est by Formula (1 x est 0.047ct) (F or Higher) (VS_i)

N.B. (MOEC) Diamond presenting Out of Round and Shallow symmetry proportions presenting nil off centre culet.
Diamond presenting Normal & Acceptable cut quality for Diamonds of this period"

N.B. The presented Diamond has by application and "In-situ" and applied type examination and analysis using "The Diamond Trading Co" (V2.03) Diamond-Sure™ and/or "SmartPro"™ screening "Instruments" have indicated a PASS result for a "Natural-Untreated" - "Earth-Mined" Diamonds.

ITEM 4. CONTINUED .../

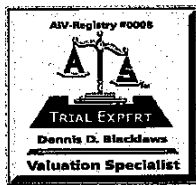
CONTINUED ...//

15/28



Dennis D. Blacklaws

This Appraisal has been prepared in conformity with accepted professional ethics of Appraisers International Society™ (USA) & The Jewellery Appraisers Society of N.Z. Inc.



Dennis Blacklaws Ltd

LOWER HUTT:

10 Laings Road, Lower Hutt, 5010, New Zealand
Phone & Fax (04) 566-3868

Email: dennis.blacklaws@gemlink.co.nz Website: www.gemlink.co.nz

Resident Appraiser/Valuer: Dennis D. Blacklaws

Gems & Jewellery Specialist - Appraiser/Valuer - Graduate Gemologist



Appraisal prepared for |
Address

© Copyright 2020 All rights reserved
Dennis Blacklaws Ltd



AppraisalPlus DBL06001

Ref No: 20723DB/LH24667

Date: 25 June, 2020

ARTICLE

ITEM 4. CONTINUED .../

Side Diamonds, (IOSRC) "irregular" shaped (Old) and (12) - (17) "Facet" and "Rose" cut;

2 x est 1.28-1.27mmØ x 0.40mm↑ & 1.29-1.27mmØ x 0.43mm↑

Est by Formula (2 x est 0.006-0.006ct) (G or Higher) (SI-I)

This Laboratory has applied various "in-situ" type "method/s" to "identify" the type and/or origin of the submitted Diamond/s and may include the use of some (if not all) of the following; Microscopy "examination", including analysis with cross-Nicol polarized Filters (Polariscope) (CPF) and/or the Gemtrix PL Inspector and/or the use of "SSEF classic illuminator" and/or (Neodymium) rare-earth Magnetism and/or GL Gem Spectrometer.
For the purposes of this Appraisal these Diamonds have been appraised/valued as (Natural - Earth Mined).

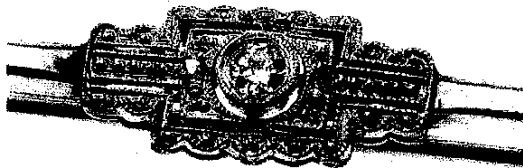
N.B. (Natural) Diamonds graded (*in-situ*) in mounts. Diamonds Est Total (Est 0.059ct).
Diamonds dimension measurements estimated due to mounts.
Diamonds colour graded under an (ultraviolet-free) colour/grading environment.
Diamonds body colour Masked due to mounts.
Diamonds NEED to be removed from mounts for more accurate
Weight, Colour and Clarity grading and to identify if Clarity enhanced.

Diamonds presenting inert (*Nil*) and (*Faint*) weak - strong
cloudy - translucent and Bluish/Violetish and *Fluorescent*
colour reaction to L.w.U.v. radiation.

Brooch Total Weight (2.81grams) with Total Metal Weight (2.80grams).
Brooch presenting Safe condition and general overall surface wear.
Photographs (X2/1.).

R.M.V.N. \$2,990.00

I.M.V. \$2,660.00




Item No 4. for (courtesy) "WIKIPEDIA" REFERENCES CONTINUED .../

CONTINUED ...//

16/28




Dennis D. Blacklaws

This Appraisal has been prepared in conformity with accepted professional ethics of Appraisers International Society™ (USA) & The Jewellery Appraisers Society of N.Z. Inc.



Dennis Blacklaws Ltd

LOWER HUTT:

10 Laings Road, Lower Hutt, 5010, New Zealand
Phone & Fax (04) 566-3668

Email: dennis.blacklaws@gemlink.co.nz Website: www.gemlink.co.nz

Resident Appraiser/Valuer: Dennis D. Blacklaws

Gems & Jewellery Specialist - Appraiser/Valuer - Graduate Gemologist



Appraisal prepared for

Address

AppraisalPlus DBL06001

Ref No: 20723DB/LH24667

© Copyright 2020 All rights reserved
Dennis Blacklaws Ltd

Date: 25 June, 2020

ARTICLE

Item No 4. for (courtesy) "WIKIPEDIA" REFERENCES CONTINUED .../



(courtesy) Ref: Wikipedia

There are so many popular antique diamond cuts on the market today. One of the most classic (and common) antique diamond cuts is the Old European cut. This diamond traces back to the romantic and 19th century and the early 20th century. The easiest way to visualise an Old European Cut diamond is by comparing one of these heirloom diamonds to a modern Round Brilliant cut diamond since both are of round cut and shape. The primary reason for the differences between an Old European cut Diamond and a Modern Brilliant cut Diamond is that the former is a more rudimentary and hand-cut stone. Characteristically, an Old European cut diamond has a smaller table and higher crown than their modern counter part. Also, one of the most prominent characteristics of an Old European cut is the culet. It is open or 'cut off' which creates the facet-window near the central points. Up until recently, it was common practice to collect all loose Old European cut diamonds and re-cut them into modern shapes. This was because the round Brilliant cut diamonds commanded more dollars per carat than an antique cut diamond. However, due to popular demand, many dealers are salvaging the earlier and old cut stones and incorporating them into vintage and/ or new contemporary settings. The Old European cut diamonds will always be worth more if they are "in-situ" and fitted with-in their original setting, but the cost gap between the old and new diamond has lessened as more people appreciate and recognise the unique beauty of heirloom diamonds.

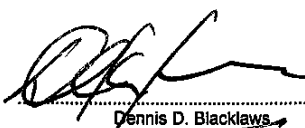
(courtesy) Ref: Wikipedia

Old Rose cuts feature a flat base, where a modern round Brilliant cut diamond's pavilion would be, therefore their peaks are instead formed into a faceted and prominent dome. Its precise shape varies in that it can have anywhere from 3 to 24 facets, allowing for complete customisation of your stone. In contrast, a modern round brilliant cut diamond features 57 or 58 facets - meaning there are fewer cuts within the diamond to reflect and re-fract and draw-in light around and within the stone. Rose cut diamonds don't have a pavilion (basically, the conical, triangular bottom part you see on a brilliant cut), instead, this cut is flat underneath, which creates a more subtle look. With a completely flat surface and fewer facets, the rose is shiny but not brilliant, meaning that this cut does not feature the same light return you view in a brilliant cut diamond, but it does yield a subtle - glowing sort of sparkle. One of the appeals of rose cut diamonds is that they get very close to your skin. Old Rose cut diamonds are very sensual and tactile, more intimate. Considered one of the original diamond cuts, the rose cut diamond dates back to the early 1500s and was commonly used through the Georgian and Victorian eras. Like other antique diamond cuts, they were cut by hand unlike machine cut brilliant diamonds - Old Rose cut diamonds and meant to dazzle under candlelight, due to the large, wide facets perform exquisitely in low light conditions. Another peculiarity found within an item of Old Rose cut jewellery is known as a "Piggy-Back" diamond with the insertion of a reflective-foil and "in-situ" to the underside of a cut-out and hollow and closed-back and/or "Conical" or "Box" shape under setting. Old Rose cut diamonds are elegant reminders of the past, which make for a compelling centrepiece. The clarity of your Old rose cut diamond is important because of the cut's transparency. Since they have few facets to distract from internal blemishes, small inclusions and internal feathers within the crystal will be more visible. Opting for a diamond with pleasing clarity rather than a higher color grade will have a more noticeable impact on it's beauty.

CONTINUED ...//

17/28




Dennis D. Blacklaws

This Appraisal has been prepared in conformity with accepted professional ethics of Appraisers International Society™ (USA) & The Jewellery Appraisers Society of N.Z. Inc.