



Appraisers International  
Society

# Dennis Blacklaws Ltd

LOWER HUTT

10 Laings Road, Lower Hutt, 5010, New Zealand  
Phone & Fax (04) 566-3668

Email: dennis.blacklaws@gemlink.co.nz Website: www.gemlink.co.nz

Resident Appraiser: Dennis D. Blacklaws

Gemologist - Diamond Grader - Jewellery Appraiser



Appraisal prepared for

Address

© Copyright 2012 All rights reserved  
Dennis Blacklaws Ltd



AppraisalPlus DBL06001

Ref No 18507DB/LH21916

Wellington

Date: 3 September, 2012

## ARTICLE

19. Imported, Period - circa 1900s Victorian, Fabricated, Assembled, (5) Bezel, - with (2) species; Beryl, - variety: Aquamarine origin; (natural) and (3) Pearls type: (Round) Seed variety: (Natural-coloured) origin: Natural variety: Half species: unknown contemporary style (Drop) design Pendant with Imported and Fabricated/Cast, design contemporary style Necklet chain.

Necklace Metal composition analysed as 9ct Red *Rosé* gold alloy and stamped with 9CT with *Fine* and *Figaro 1:1* style (17:0%) 5.09mm x 1.77mm x 1.14mm dimension presenting *solid*, and *polish-finish* with *hinged* with *integrated* style *links*, fitted with *solid* and plain 6.00mm x 1.59mm dimension *standard* and plain *Bolt-Ring*, style *clasp*, with Total Necklet weight (2.50grams).

Necklet attached to Red (Rose) gold, *Oval* shaped, 6.34mm x 4.21mm x 1.19mm dimension *shackle* setting, presented *applied* top of *hinge* attached to Pendant setting, presented with 9ct Red (Rose) gold, *Elevated*, single *Aquamarine*, with *rub-over* flush and inset *Round* shaped, 5.29mm x 2.00mm dimension *Bezel* design *Tension* type *central* style *pierced-back* mount setting.

Pendant presented with Red (Rose) gold, *Elevated*, single *Aquamarine*, with *rub-over* flush and inset, *Pear* shaped, 8.88mm x 4.16mm x 2.25mm dimension single *Bezel* design, *Tension* type, *suspended* and *hinged* style *Drop* design mount setting, with cut-out and pierced, *Oval* shaped, 35.00mm x 22.00mm x 1.13mm dimension *Strip* design *immediate* surround settings, presented with (3) separate *Half-Pearls*, with *rub-over* flush inset, *Round* shaped, 2.89-2.16mm x 2.14-1.92mm dimension *Bezel* design, *closed-back* design *Drop* mount setting.

*Drop Aquamarine*, Round shaped mixed cut,

1 x est 5.04-5.00mm x 2.25mm

Est by Formula 1 x est 0.324ct

*Drop Aquamarine*, Pear shaped mixed cut,

1 x est 8.10 x 3.45mm x 1.91mm L.W. Ratio 2.348:1

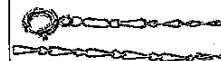
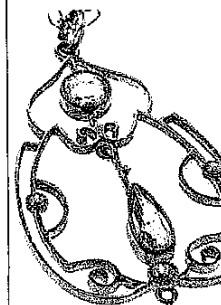
Est by Formula 1 x est 0.305ct

Aquamarine presenting *semi-translucent* slightly *Bluish/Green Hue* with *Tone* (2-3) and *Saturation* (2-3) with *Clarity* (SI).

### GIA GemSet® colour Analysis

Aquamarine presenting *Good symmetry* and *proportions*, with *High surface polish* and presenting noticeable *Window effect*, with *colour Banding* and *colour Zoning* and presenting *Internal Fluid* and *Positive* and *Negative Crystallites* and *internal fine growth Parallel Tubes*, and a number of *Healing-Fracture* type inclusion scenes, applying (oblique-lighting) and (immersion-microscopy) technique, presented in mounts.

It is internationally recognised as a trade practice to treat gems of this variety, by various methods to enhance the colour and/or clarity, - although evidence of treatment is not immediately apparent some may be assumed.  
Extent: Minor/Significant Stability: Stable under normal wearing conditions. Prevalence: Never/Rarely/Commonly/Usually



ITEM 19. CONTINUED .../

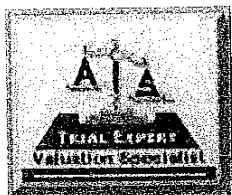
CONTINUED ...//

29/52



This Appraisal has been prepared in conformity with accepted professional ethics of Appraisers International Society™ (U.S. The Jewellery Appraisers Society of N.Z.

Dennis D. Blacklaws



Appraisers International  
Society

# Dennis Blacklaws Ltd

LOWER HUTT: 10 Laings Road, Lower Hutt, 5010, New Zealand  
Phone & Fax (04) 566-3668

Email: dennis.blacklaws@gemlink.co.nz Website: www.gemlink.co.nz

Resident Appraiser: Dennis D. Blacklaws

Gemologist - Diamond Grader - Jewellery Appraiser

Appraisal prepared for  
Address



© Copyright 2012 All rights reserved  
Dennis Blacklaws Ltd



AppraisalPlus DBL06001

Ref No 18507DB/LH21916

Date: 3 September, 2012

## ARTICLE

### ITEM 19. CONTINUED ...I

#### Surround Half Pearls.

3 x est 1.75-2.40mmØ

Seed (*non drilled*) Half Pearls presenting White - Cream/White - Golden/Yellowish body colour, with Rose/Greyish/Greenish surface *over-tone*, presented with assorted high - medium surface *lustre*, under (*incandescent*) light.

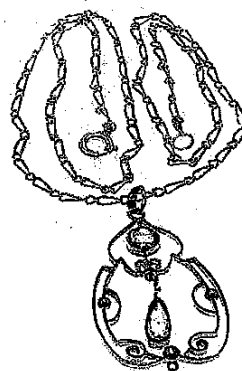
**N.B.** Direct X-Ray radiograph examination required to identify Nacre thickness and to identify if of (*Natural*) or (*Fresh-Water - Tissue Grafted*) or (*Shell Beaded-Akoya*) Cultured origin. For the purposes of this appraisal all Pearls appraised as Natural.

**N.B.** Aquamarine and Half-Pearls graded (*in-situ*) in mounts.  
Aquamarine and Half-Pearls dimension measurements estimated due to mounts.

Pendant Total Weight (1.70grams) with Total Metal Weight (1.53grams).  
Pendant presenting near as 'New' and Safe condition and general overall surface wear.  
Photographs (X2/1.).

R.V.N. \$. N/A

I.V. \$.1,320.00



CONTINUED ...II

30/52



*[Signature]*  
Dennis D. Blacklaws

"This Appraisal has been prepared in conformity with accepted professional ethics of Appraisers International Society™ (USA) The Jewellery Appraisers Society of N.Z.