



Appraisers International  
Society

# Dennis Blacklaws Ltd

LOWER HUTT:

10 Laings Road, Lower Hutt, 5010, New Zealand  
Phone & Fax (04) 566-3668

Email: dennis.blacklaws@gemlink.co.nz

Website: www.gemlink.co.nz

Resident Appraiser/Certified Valuer: Dennis D. Blacklaws



Gems & Jewellery Specialist - Graduate Gemologist - Advanced Valuation Specialist

Appraisal prepared for

Address



AppraisalPlus DBL06001

Ref No: 19236DB/LH23333

© Copyright 2014 All rights reserved  
Dennis Blacklaws Ltd

Date: 23 September, 2015

## ARTICLE

4. (Original) "One-Off" Commission, Cast/Fabricated, Bespoke/Hand-Crafted, - single Bezel Coronet, with single species: Nephrite (Pounamu Jade) (Greenstone) variety: (Kawakawa) synthesis: Natural object: (non-faceted en-Cabochon Gemstone) treatment: (Un-Enhanced) origin: New Zealand Alaska Asia Turkestan (un-Known) and vintage - contemporary/modernist style (Solitaire) design Ring.

Ring Metal composition analysed as 9ct Red Rosé gold alloy, and stamped with 9CT style hallmark and presented with plain, half (1/2) round, and tapered, 'polish-finish' 3.01mm- x 2.05mm- x 0.99-1.28mm± dimension style band.

Ring presented with Red Rosé gold, flow-on to cut-out and 'fold-over' and 'solid' shaped, plain and inverted to 'Point' design, 'solid' design "shoulder" setting, applied to either side.

Ring presented with Red Rosé gold, Elevated, single Greenstone (Nephrite), with (4) claw and (4) 'solid' type pillar, flush and inset, with cut-out and pierced, 'single' and 19.08mm- x 13.42mm- x 2.30mm± dimension separate Bezel design, 'Oval' and "Parallel" shaped, Tension inset, central style "Assembly" mount setting.

Ring presented with cut-out and pierced, "Assembly" setting placed across top of cut-out and pierced, 24.33mm- x 17.79mm- x 0.62-8.01mm± dimension separate and 'Up-Swept' design, 'Oval' and 'curve' shaped, 'immediate' and "surround" and 'base' style setting, 'split-level' and applied to top centre of band.

Centre Nephrite, modified, and "Oval" shaped, 'medium and en-Cabochon cut;

1 x est 18.46 x 13.24mmØ x 5.52mm± L.W. Ratio 1.394:1

Est by Formula 1 x est 11.821ct

Nephrite (Greenstone) presenting very slightly Bluish/Green Hue translucent - semi/translucent (DK) Translucency with Tone (4) (FM) Fine/Medium with Texture (3-4) Minute inclusions

Nephrite (Greenstone) presenting High surface polish with Actinolite, Hornblende, Tremolite and Oxide type scenes, applying (oblique lighting) and (immersion microscopy) technique, presented in mount.

It is an internationally recognised trade practice to treat gems of this variety by various methods to enhance the colour and/or clarity, applying Microscopy technique indicates nil evidence of (enhancement) in this gem.  
Extent: Minor/Moderate/Significant Stability: Stable under normal wearing conditions. Prevalence: Never/Rarely/Commonly

N.B. Nephrite (Greenstone) graded in mount (in-situ).  
Nephrite (Greenstone) length- & width- & depth-  
dimension measurements estimated due to mount.

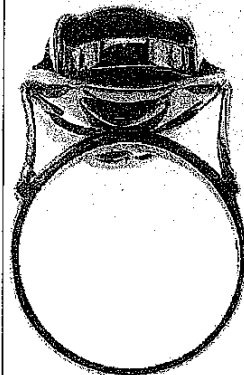
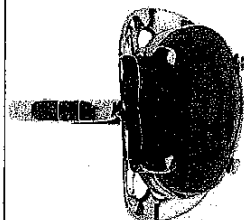
Ring Total Weight (8.20grams) with Total Metal Weight (5.84grams).

Ring presenting near as 'New' and Safe condition.

Finger size (P) centre. Photographs (X2/1.).

R.M.V.N. \$2,020.00

I.M.V. \$1,800.00



ITEM 4. (courtesy) "WIKIPEDIA" REFERENCES CONTINUED .../

CONTINUED ...//

14/22



Dennis D. Blacklaws

This Appraisal has been prepared in conformity with accepted professional ethics of Appraisers International Society™ (USA) & The Jewellery Appraisers Society of N.Z. Inc.