



Appraisers International  
Society

# Dennis Blacklaws Ltd

LOWER HUTT:

10 Laings Road, Lower Hutt, 5010, New Zealand  
Phone & Fax (04) 566-3668

Email: dennis.blacklaws@gemlink.co.nz Website: www.gemlink.co.nz

Resident Appraiser/Certified Valuer: Dennis D. Blacklaws



Gems & Jewellery Specialist - Graduate Gemologist - Advanced Valuation Specialist

Appraisal prepared for

Address:

© Copyright 2014 All rights reserved  
Dennis Blacklaws Ltd



AppraisalPlus DBL06001

Ref No 19236DB/LH23333

Date: 23 September, 2015

## ARTICLE

5. Branded, (Reproduction) Cast/Fabricated, - single Bezel, with (single) species: Quartz variety: Madeira Citrine synthesis: (Natural) object: (faceted gemstone) treatment: (Enhanced) origin: North America Swiss Africa Sri-Lanka Russia (Urals) (unknown) with vintage - contemporary/modernist style (Solitaire) design Ring.

Ring Metal composition analysed as 9ct Yellow gold alloy, and stamped with 9CT style hallmark and brand/makers mark presented with plain, half (1/2) round, flat and tapered, 9.75mm - x 3.75mm - x 3.05-0.76mm† dimension 'polish-finish' style shank.

Ring presented with Yellow gold, flow-on to cut-out, with "Bead" and "Texture" patterned, "Taper" shaped, "solid" type "shoulder" setting, applied across top of either side..

Ring presented with Yellow gold, Elevated, single Citrine, and (4) "Beaded" type claw and (4) "wire" type pillar, flush and inset, 12.42mm - x 10.05mm - x 8.00mm† dimension, "Oval" shaped, with pierced and cut-out, "single" separate Bezel design, Tension inset central style mount setting.

Ring presented with Yellow gold, Elevated, and presented with "multi" separate "Beaded" and "wire" type pillar, and "split-level" and "immediate" and "surround" 23.86mm - x 21.82mm - x 11.20mm† dimension "triple-row" and "Assembly" style settings, placed on top of "Strip" and "under-rail" type "base" setting, inset between shank ends.

Central Citrine, modified, and "Oval" shaped mixed cut;

12.42mm - x 10.05mm - x 8.00mm† dimension

23.86mm - x 21.82mm - x 11.20mm† dimension

Citrine presenting semi-translucent slightly Yellowish/Orange - Orange/Yellowish Hue, with Tone (4-5) with Saturation (2-4) and Clarity (VS).

### GIA GemSe® colour Analysis

Citrine presenting Very Good symmetry and proportions, with abraded crown facet junctions, presenting Colour Banding and Colour Zoning and slight Window effect, and presenting High surface polish and Brazil-Twinning effect under crossed-Nicol prisms (Polariscope) type scenes, applying (oblique lighting) and (immersion microscopy) technique, presented in mount.

(View photo-micrograph)

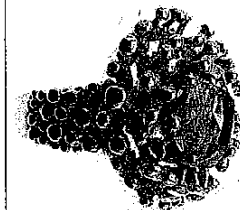
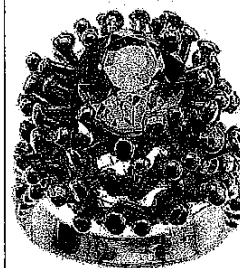
With the mass production of synthetic twinned Citrine, we are unable to distinguish if natural or of synthetic origin unless natural inclusions are microscopic visible. Laser tomography is currently the most definite method of determination and is unavailable in N.Z. For the purposes of this appraisal Natural origin is assumed.

N.B. Citrine graded in mounts (in-situ). Immersion Microscopy analysis indicates Citrine of un-known origin Citrine length - & width - & depth† dimension measurements estimated due to mount.

Ring Total Weight (12.40grams) with Total Metal Weight (11.39grams).

Ring presenting near as 'New' and Safe condition.

Finger size (N:1/2) centre. Photographs (X2/1.).



photomicrograph



R.M.V.N. \$1,970.00

I.M.V. \$1,740.00

CONTINUED ...//

16/22



*Dennis D. Blacklaws*  
Dennis D. Blacklaws

This Appraisal has been prepared in conformity with accepted professional ethics of Appraisers International Society™ (USA) & The Jewellery Appraisers Society of N.Z. Inc.