



Appraisers International  
Society

# Dennis Blacklaws Ltd

LOWER HUTT:

10 Laings Road, Lower Hutt, 5010, New Zealand  
Phone & Fax (04) 566-3668

Email: dennis.blacklaws@gemlink.co.nz Website: www.gemlink.co.nz

Resident Appraiser/Certified Valuer: Dennis D. Blacklaws

Gems & Jewellery Specialist - Graduate Gemologist - Advanced Valuation Specialist



Appraisal prepared for  
Address

AppraisalPlus DBL06001

Ref No: 19236DB/LH23333

© Copyright 2014 All rights reserved  
Dennis Blacklaws Ltd

Date: 23 September, 2015

## ARTICLE

6. Branded, (Reproduction) Cast/Fabricated, - single Bezel, with single species; Quartz variety; Amethyst object: (faceted Gemstone) synthesis: (Natural) treatment: (Non-Enhanced) origin: North America Switzerland Africa Sri-Lanka Russia (Urals) (unknown) with classical/traditional - vintage style (Solitaire) design Ring.

Ring Metal composition analysed as 9ct Yellow gold alloy, and stamped with 9CT style hallmark and brand/makers mark, presented with plain, and half (1/2) round, tapered, with 7.34mm → x 4.23mm → x 2.13-1.20mm† dimension 'polish-finish' style shank.

Ring presented with Yellow gold, and flow-on to 'Taper' shaped setting, presented with across top of either side..

Ring presented with Yellow gold, and Elevated, with single Amethyst, with (10) claw and cut-out and pierced (10) pillar, flush and inset, 11.80mm → x 8.70mm → x 6.51mm† dimension 'single' separate Bezel design, 'Oval' and "Box" shaped, Tension inset, 'pierced-back' style central mount setting.

Ring presented with "Assembly" setting placed across top of cut-out, 17.46mm → x 14.93mm → x 9.75mm† dimension 'Oval' and "Fluted" design 'immediate' and "surround" setting, inset between shank ends.

Centre Amethyst, modified, and (Brilliant) and "Oval" shaped, mixed cut;

1 x est 10.46 x 8.15mmØ x 5.46mm† L.W. Ratio 1.247:1

Est by Formula 1 x est 2.778ct

Amethyst presenting semi-translucent/transparent Purplish/Violetish Hue, with Tone (6/7) with Saturation (3/4) and Clarity (SI).

### GIA GemSet® colour Analysis

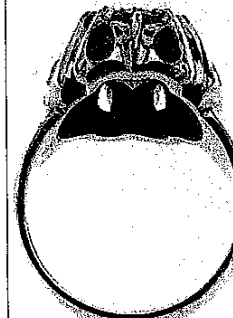
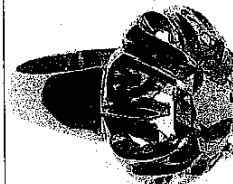
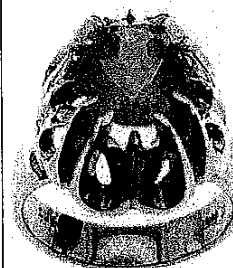
Amethyst presenting Good symmetry and proportions, with minor abraded crown facet junctions, presenting Colour Banding and Colour Zoning and slight Window effect, and presenting High surface polish, and presenting multi-phase secondary syngenetic Positive and Negative crystallites and a number of internal Healing-Fractures with Actinolite Goethite and presenting Brazil-Twinning effect under crossed-Nicol prisms (Polariscope) type inclusion scenes, applying (oblique lighting) and (Immersion microscopy) technique, presented in mount.

With the mass production of synthetic twinned Amethyst, we are unable to distinguish if of Natural or of (synthetic) origin unless natural inclusions are Microscopic visible.  
Laser tomography is currently the most definite method of determination and is unavailable in N.Z.  
For the purposes of this appraisal Natural origin is assumed.

N.B. Amethyst graded in mount (in-situ).

Immersion Microscopy analysis indicates Amethyst of un-known origin.  
Amethyst length → & width → & depth† dimension measurements estimated due to mount.

Ring Total Weight (7.30grams) with Total Metal Weight (6.74grams).  
Ring presenting near as 'New' and Safe condition and general overall surface wear.  
Finger size (M) centre. Photographs (X2/1.).



photomicrograph



R.M.V.N. \$1,420.00

I.M.V. \$1,290.00

CONTINUED ...//

17/22



Dennis D. Blacklaws

This Appraisal has been prepared in conformity with accepted professional ethics of Appraisers International Society™ (USA) & The Jewellery Appraisers Society of N.Z. Inc.