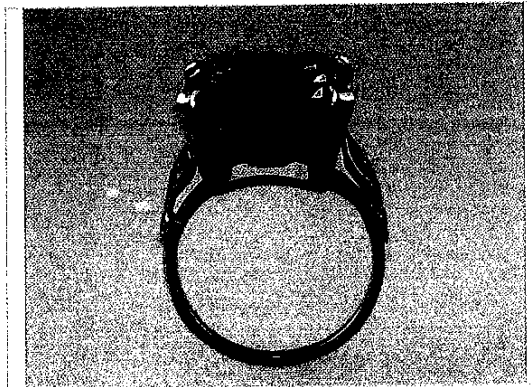
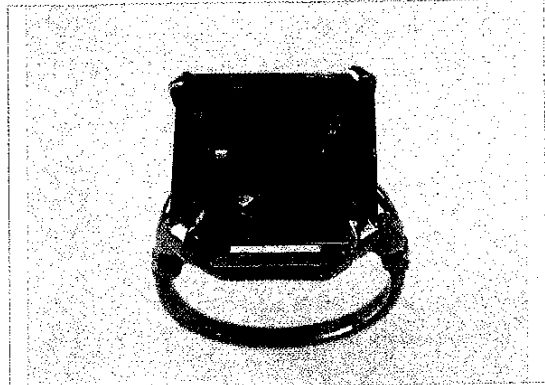


749

ITEM SCHEDULE

Valuation 1709498: Item 3 of 10

RING	A CITRINE QUARTZ DRESS RING
Design:	<p>The Band: A plain rounded profile with upswept leaf patterned split shoulder towards the setting. Width: 6.00-1.50mm Thickness: 2.00-1.15mm</p> <p>The Setting: A square shape four claw set with a square Octagonal shaped Citrine. Bezel support and open backed. Dimensions: 14.41 x 14.11 x 9.80mm</p>
Manufacture:	Handmade
Metal:	18 carat yellow gold
Stamps:	18ct
Finger size:	J
GEM type:	1, CITRINE QUARTZ
Measuring:	13.50 x 13.40 x 8.77mm
Total weight:	9.70ct estimated
Colour:	Vivid Orange
Clarity:	Near eye clean
Cut:	Square octagonal step cut
Overall grade:	Lower fine grade
Item notes:	
Condition:	Very good
Weight:	5.83 grams



NEW REPLACEMENT COST: **\$2,850.00**
