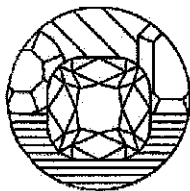


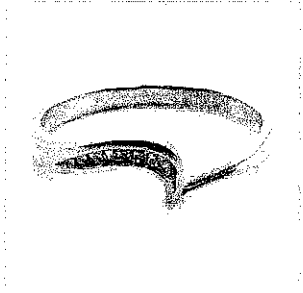
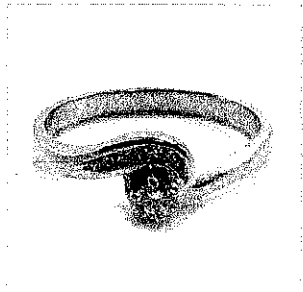
NICHOLAS TSALIS
Gemmologist & Jewellery Valuer
FGA, GAA Diamond Grading
Member of the JVSNZ



GRAHAM OLIVER
Gemmologist & Jewellery Valuer
FGA, GIA Diamond Grading
Member of the JVSNZ

W E L L I N G T O N

J E W E L L E R Y V A L U A T I O N S



DATE COMPLETED
JULY 30, 2020

ITEM NUMBER
JBC5975

DOCUMENT FUNCTION
INSURANCE APPRAISAL

PREPARED FOR:

CUSTOMER ADDRESS:

A DIAMOND RING BRIDAL SET

Cast assembled in 18 carat white gold
Not stamped

The Engagement ring features a six claw set round brilliant cut diamond in a tapered band with a half round profile, wrap-around shoulders and sic channel set round brilliant cut diamonds one shoulder. The band measures 2.70-3.00mm in width and 1.30-2.60mm in thickness. Finger size: R 1/2. Total weight: 4.50 grams.

The Wedding ring consists of six channel set round brilliant cut diamonds in a fitted and notched band with a half round profile. The band measures 2.91-1.16mm in width and 1.16-2.18mm in thickness. Finger size: R 1/2. Total weight: 3.00 grams.

Presented in very good condition.

One (1) round brilliant cut natural diamond

Measurements: 3.26mm - 3.30mm in diameter x ~2.00mm in depth.
Estimated Weight: 0.13 ct.
Color: G - H
Clarity: SI1 - SI2
Cut: Good

Twelve (12) round brilliant cut natural diamonds

Measurements: 1.30mm - 1.30mm in diameter x ~0.79mm in depth.
Weight Range: 0.010 ct. - 0.010 ct.
Estimated Total Weight: 0.12 ct.
Color: G - I
Clarity: SI1 - SI2
Cut: Good

METAL PRICES

- Gold: NZD \$2,950.72/toz.
- Silver: NZD \$35.39/toz.
- Platinum: NZD \$1,413.24/toz.
- Palladium: NZD \$3,220.53/toz.
- USD \$1.00 => NZD \$1.51

NZD \$5,390.00

Estimated Retail Replacement Value
*Sales taxes are included.

Nicholas Tsalis, FGA, GAA Diamond Grading Certificate
Gemmologist & Jewellery Valuer

