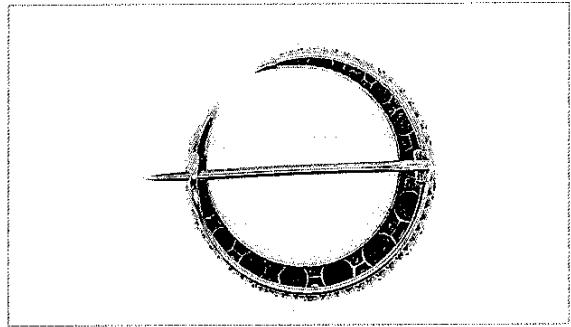
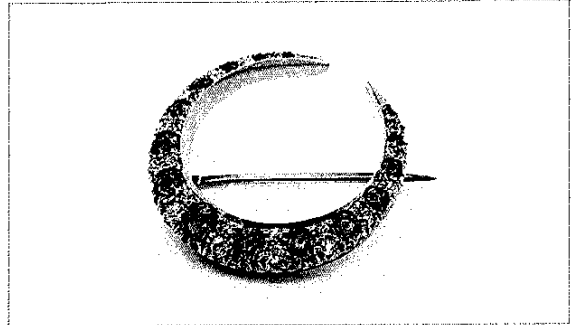


634

Gemmologists Report - an independent expert assessment

Item:	ANTIQUÉ RUBY & DIAMOND CRESCENT BROOCH
Design:	A crescent-shaped brooch comprised of graduating alternating single and double bead settings, open back supports and brooch pin on reverse
Manufacture:	Custom made
Complexity:	Complex
Finish:	Very Good
Metal:	18 carat yellow gold brooch, 9 carat yellow gold brooch pin
Finishing:	Polished
Overall size:	30.7 x 31.0 mm
GEM type:	RUBY
Number and Cut:	15, round mixed cut
Measuring:	1.70 mm, 2.00 mm, 2.50 mm, 3.20 mm, 3.50 mm, 3.90 mm, 4.30 mm
Total weight:	2.0 ct
ISCC colour:	Deep - Vivid Purplish Red
Overall grade:	Upper Good - Fine (6 - 7)
DIAMONDS:	26, assorted old cut
Size range:	1.30 - 2.30 mm
Total weight:	0.50 ct
Averaged colour:	G
Averaged clarity:	I1
Item notes:	This antique Victorian brooch presents in excellent condition with no evidence of prior repair or modifications.
Condition:	Excellent
Weight:	6.68 grams



GEMMOLOGISTS REPORT:

The item described in this report has been examined using current best practice methods and standard gemmological equipment. My reported conclusions are true and correct to the best of my knowledge. I have provided an objective opinion and I have no financial interest in the subject property and no personal interest or bias with respect to the parties involved.

KATA GRANIC, FGA, GIA Diamonds Graduate

REPORT NO: 2010464/3