

ITEM SCHEDULE

Valuation 1405367: Item 1 of 5

RING emerald and diamond set rectangular top cluster ring, scalloped outside edge, small diamonds bead set around a centre raised corner set emerald, yellow and white gold open "V" style shoulders, yellow gold gallery/basket undersetting

Manufacture: hand made and assembled

Metal: 18ct yellow & white gold

Stamps: 18ct

Engraved: polished

Shank profile: narrow, near flat and tapered

DIAMONDS: 14, single (8/8) cut

Measuring: 1.70mm

Total weight: 0.28ct

Averaged quality: commercial

Setting: bead set

GEM type: EMERALD

Number and Cut: 1, emerald (step cut) cut

Measuring: 6.05 - 5.13mm

Total weight: 0.70ct

Colour description: bG 4/3 - bluish Green

Colour grade: Good(4)

Clarity grade: commercial(2)

Cut grade: Good(4)

Overall grade: commercial (2)

Setting: corner claw set

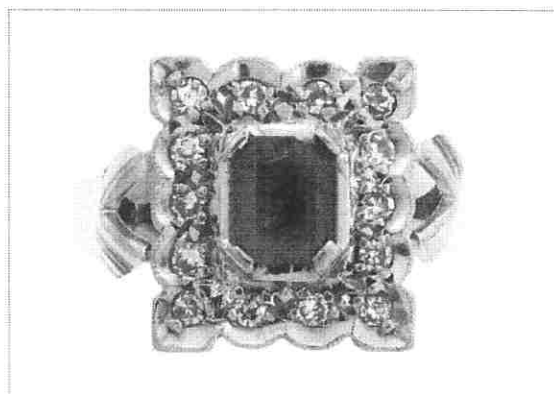
Comments: Emerald shows a large chip on one corner

Item notes:

Durability: Fair

Condition: Good

Weight: 8.13 grams



NEW REPLACEMENT COST: \$5,700.00