

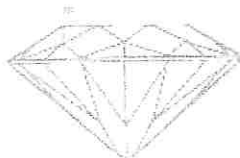
AN INDEPENDENT JEWELLERY APPRAISAL

Nicholas Tsalis

Gemmologist & Jewellery Appraiser

FGA - Fellow of Gemmological Association of Great Britain

GAA (Dia Cert) Gemmological Association of Australia



Graham Oliver

Gemmologist & Jewellery Appraiser

FGA - Fellow of Gemmological Association of Great Britain

GIA (Dia Cert) Gemmological Institute of America

DATE COMPLETED

DECEMBER 3, 2019

APPRAISAL NUMBER

6326-100289-1

DOCUMENT FUNCTION

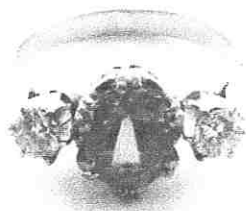
INSURANCE APPRAISAL

PREPARED FOR

WALKER & HALL

ADDRESS

WELLINGTON, NEW ZEALAND,



AN EMERALD AND DIAMOND THREE STONE RING

Handmade in 18 carat yellow and white gold

Stamped: 18ct

The ring features an oval brilliant cut natural Emerald in a white gold double six claw Mathey styled setting on a yellow gold under-bezel, a white gold six claw set round brilliant cut diamond on either side and joined to a tapered yellow gold band with upswept pointed shoulders and a half round profile. The band measures 2.46mm in width, 1.16mm in thickness.

Finger size: L 1/2. Total weight: 4.75 grams. Presented in excellent condition.

One (1) natural, oval-shaped, brilliant cut, translucent, medium-light, green emerald

Species:	Natural Beryl
Variety:	Natural Emerald
Measurements:	8.18mm x 6.20mm x 5.31mm in depth.
Carat Weight:	1.52 ct.
Clarity:	Slightly Included (Type III)
Cut:	Medium

Two (2) round brilliant cut natural diamonds

Measurements:	3.76mm - 3.80mm in diameter x ~2.31mm in depth.
Estimated Total Weight:	0.36 ct.
Color:	H - I
Clarity:	SI1 - SI2
Cut:	Good


METAL PRICES

- Gold: NZD \$2,264.54/toz.
- Silver: NZD \$26.30/toz.
- Platinum: NZD \$1,401.84/toz.
- Palladium: NZD \$2,850.73/toz.
- USD \$1.0000 => NZD \$1.5328

NZD \$7,900.00

Estimated Retail Replacement Value

*Sales taxes are included.


Nicholas Tsalis, FGA, GAA Diamonds
Gemmologist & Registered Jewellery Valuer

LEGAL DISCLAIMER: This document is intended for insurance purposes only, being an estimate of the cost to replace the article(s) at full retail prices in effect at this date. The information recorded on this appraisal represents our interpretation of results obtained from gemological instruments and grading techniques designed for this purpose. Any modifications applied to the original piece including but not limited to metal structure and composition alteration, diamond and gemstone (shape, cut, color, clarity, size, hue, saturation, etc.) replacement or alteration will void this appraisal. Jewellery polishing and sizing will not affect the status of this appraisal. Due to the subjective nature of gemological appraisals, results may vary considerably between appraisers. We have made this evaluation to the best of our knowledge and ability, but can assume no liability for same, not attributable to gross negligence, fraud or willful misconduct. This document was generated using the Instapraise appraisal platform.