



THE JEWELLERY APPRAISERS
SOCIETY OF NEW ZEALAND INC

150
AN INDEPENDENT
JEWELLERY APPRAISAL

Graham Oliver
Jewellery Appraiser
FGA GIA (Dia Cert) CSMJASNZ

JEWELLERS AND WATCHMAKERS OF NEW ZEALAND INC

CUSTOMER:

ADDRESS:

DATE: 22 September 2006

AGENT: Jewellery Valuations Ltd, Mahara Place, Waikanae

RETAIL NEW REPLACEMENT

VALUE

1 X ANTIQUE STYLED ENAMELLED BROOCH

Metal based - Gilded

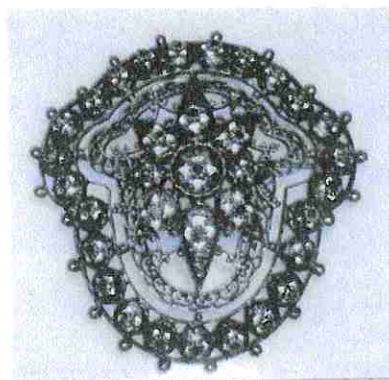
Dimensions 62.00mm x 60.00mm

Pierced outer circular beaded pattern
presenting a star pattern centre with a filigree surround

The Brooch has a metal pin

The leaves and the outer circles are enamelled
White - Red - Blue in cluster formations

The Brooch is in excellent condition
Weight 27.2 grams



\$395.00

1 X PAIR OF MATCHING DROP EARRINGS

Enamelled flower pattern - Screw fittings
Drop shaped Metal based



\$95.00

NEW REPLACEMENT \$

(see attached photograph)

JVL-20

\$US-0\$NZ 0.6512

Gold \$US 572

Platinum \$US 1138

Signed:

see inside of cover for conditions relating to this valuation

Diamond Grading Scales in descending order of quality/value:

Make: Ideal - Very Good - Good - Medium - Fair - Poor

Colour: D - E - F - G - H - I - J - K - L - M - N - O ... Z

Clarity: IF - VVS1 - VVS2 - VS1 - VS2 - SI1 - SI2 - I1 - I2 - I3

(Diamonds should be removed for accurate colour and clarity grade)