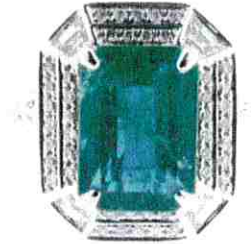


July 28, 2021

GemLab - EJL

VALUATION ON NEW ITEM FOR SALE

Ref: GL21G431 3/3



RING: New, modern emerald and diamond cluster.

Total Weight = 6.02 grams.

MOUNT... is assembled cast & hand-finished in rhodium plated 18ct white gold (alloyed with copper nickel & zinc), as tested by XRF metal analysis, stamped "750 D065 EM350".

A 16.1 x 13.6 mm octagonal cluster head with pillar gallery, onto a 2.8 mm rounded shank with pave set rounded shoulders and 17.3 mm inside diameter.

NATURAL EMERALD... One is 4 claw set, emerald cut, approx 10.6 x 7.5 x 5.7 mm, reported 3.50 carats, medium green, very heavily included, with Good colour quality, and 35 % diffuse brilliance. Noticeable surface breaking inclusions.

***Note** Most emeralds are treated with oils or other fillers to improve their clarity. This is a standard trade practice that needs to be disclosed. Unless otherwise stated it is assumed that this stone has been so treated, and therefore care should be taken with cleaning or repairing any jewellery in which this stone is mounted.

NATURAL DIAMONDS... 70 are grain set, round brilliant cut, approx 0.9 - 1.3 mm, estimated to total 0.45 carats, with quality assessed in the setting as Good to Fair make, G-K colour, I2 clarity.

NATURAL DIAMONDS... Four are bezel set in the corners, trapeze step cut, approx 3.7 x 2.0 mm, estimated to total 0.20 carats, with quality assessed in the setting as Very Good major symmetry, H-I colour, VS clarity.

Diamond Grading Scales in descending order of quality/value

Make : Excellent - Very Good ----Good ----- Fair ----- Poor
 Colour : D--E--F -- G -- H -- I -- J --- K ---- L ---- M ---- N ---- O .. Z
 Clarity : IF - VVS1 - VVS2 - VS1 - VS2 -- SI1 -- SI2 - SI2/I1 - I1 -- I2 - I3

\$11000.00 Retail Market Value

THIS VALUATION REPORT is prepared for the purpose of retail comparison but may also be used to arrange initial insurance cover. It should be personalised & updated for insurance purposes within a year of purchase.

This can be arranged by phoning your GemLab agent above.

RETAIL MARKET VALUE = Our opinion of the likely price range this new item would sell in, without compulsion or conditions, to a consumer with knowledge of all the relevant facts, in the most common retail market for similar quality new items, and given appropriate marketing & time to effect a sale.

Metals in \$US/oz : Gold = 1800, Plat = 1140 ; Economics : \$NZ1 = \$US0.69 & \$AUS0.91, GST = 15 %

Declaration: GemLab Jewellery Valuers are totally independent and as such have no financial interest in the subject property or bias with respect to any party. Our fees are based on an hourly rate and are not contingent on outcomes.

Paul Nilsson FGA distinction, GIA Gemologist, Member JVSNZ, GANZ, NAJA, NZILA, ANZIIF

42 Constellation Drive, Mairangi Bay 0632

PO Box 305299, Triton Plaza, Auckland 0757, New Zealand

Phone: +64 9 48 999 19 • Fax: +64 9 48 999 24 • info@gemlab.co.nz • www.gemlab.co.nz