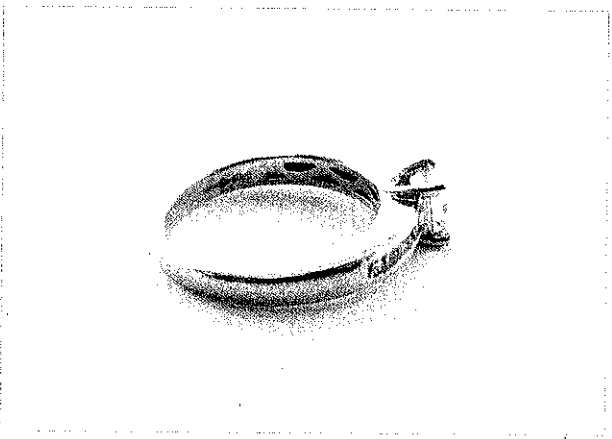
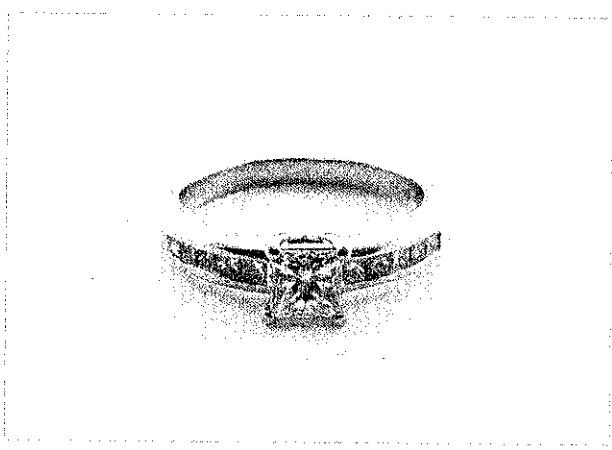


287

ITEM SCHEDULE

Valuation 2001353: Item 1 of 2

| | |
|-------------------------|--|
| Item: | 1 x SINGLE DIAMOND CORONET RING |
| Design: | A single Princess cut diamond in a four claw wire type setting on a medium tapered band with square princess cut shoulder diamonds |
| Era style: | Modern |
| Manufacture: | Component hand finished |
| Finish: | Polished |
| Metal: | Platinum |
| Stamps: | Dom 950 |
| Overall size: | Band dimensions; 2.98-2.15 x 1.07mm half round |
| Finger size: | J |
| DIAMONDS: | 1 X CENTRAL DIAMOND 10 X SHOULDER DIAMONDS |
| Shape: | Square Princess cut |
| Average size: | Centre 4.25 x 4.24mm Shoulder diamonds 1.60mm |
| Size range: | Centre diamond stated 0.51ct Shoulders Total weight stated 0.27ct |
| Total weight: | 0.78ct |
| Averaged colour: | F-G VS-2-SI-1 |
| Cut: | Very good |
| Item notes: | Replacement price confirmed with Partridge Jewellers |
| Condition: | Very good |
| Weight: | 4.90 grams |



NEW RETAIL COMPARISON COST: \$5,820.00

ITEM SCHEDULE

Valuation 2001353: Item 2 of 2

Item: 1 x PLATINUM LADIES MATCHING WEDDING/ANNIVERSARY RING

Design: 15 x Princess cut diamonds channel set into a narrow band, tapering.

Era style: Modern

Manufacture: Component hand finished

Finish: Polished

Metal: Platinum

Stamps: Plat P

Overall size: Band dimensions; 2.45 x 1.98mm thickness; 2.17 x 1.00mm Rounded profile

DIAMONDS: 15 x diamonds channel set

Shape: Square Princess cut

Average size: 1.60mm

Size range: 0.02-0.03ct each

Total weight: Reported 0.36 ct

Colour range: F-G

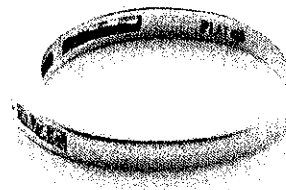
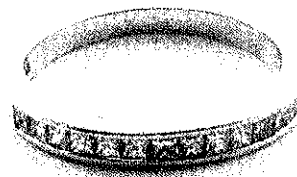
Clarity range: SI-2

Cut: Very good

Item notes:

Condition: Very good

Weight: 2.80 grams



NEW RETAIL COMPARISON COST: \$2,950.00
