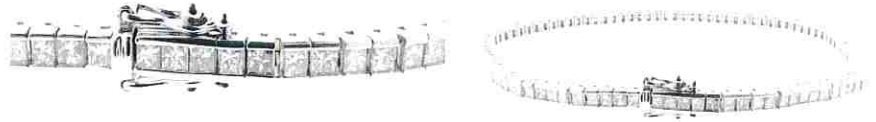


July 29, 2021

GemLab - EJL

VALUATION ON NEW ITEM FOR SALE

Ref: GL21G341 3/7



BRACELET: New, modern diamond line style.

21G341 3

Total Weight = 12.36 grams.

MOUNT.... is assembled cast in rhodium plated 18ct white gold (alloyed with copper nickel & zinc), as tested by XRF metal analysis, stamped "750 D273".

18cm long, 2.8 mm wide, 2.8 mm tall, linked square channel settings, hidden box clasp with 2x safety clips.

NATURAL DIAMONDS... 97 are channel set, princess cut, approx 1.7 mm in size, reported to total 2.73 carats in weight, with quality assessed in the setting as :-

Good make

Mixed F-L colour

VS-I2 clarity

Diamond Grading Scales in descending order of quality/value

Make : Excellent - Very Good ----Good ----- Fair ----- Poor

Colour : D--E--F -- G -- H -- I -- J --- K ---- L ---- M ---- N ---- O .. Z

Clarity : IF - VVS1 - VVS2 - VS1 - VS2 -- SI1 -- SI2 - SI2/I1 - I1 -- I2 - I3

\$9500.00 Retail Market Value

THIS VALUATION REPORT is prepared for the purpose of **retail comparison** but may also be used to arrange initial **insurance** cover. It should be **personalised & updated** for insurance purposes within a year of purchase. This can be arranged by phoning your GemLab agent above.

RETAIL MARKET VALUE = Our opinion of the likely price range this new item would sell in, without compulsion or conditions, to a consumer with knowledge of all the relevant facts, in the most common retail market for similar quality new items, and given appropriate marketing & time to effect a sale.

Metals in \$US/oz : Gold = 1800, Plat = 1140 ; **Economics** : \$NZ1 = \$US0.69 & \$AUS0.91, **GST = 15 %**

Declaration: GemLab Jewellery Valuers are totally independent and as such have no financial interest in the subject property or bias with respect to any party. Our fees are based on an hourly rate and are not contingent on outcomes.

Paul Nilsson FGA distinction, GIA Gemologist, Member JVSNZ, GANZ, NAJA, NZILA, ANZIIF
42 Constellation Drive, Mairangi Bay 0632

PO Box 305299, Triton Plaza, Auckland 0757, New Zealand
Phone: +64 9 48 999 19 • info@gemlab.co.nz • www.gemlab.co.nz