

363

◆ BERRY'S ◆

FINE JEWELLERY WORK SHOP

99 Dixon St Wellington New Zealand
 PO Box 11335
 Phone 04 3856 015 Fax 04 3856 019
 E-mail berrys@paradise.net.nz

Manufacturing Jewellers
 Diamond Mounters
 Gemmologists

Date: 28 September 2000
 Valuation No: 217
 Customer No: 90196
 Page: 1 of 1

Certificate of Valuation

Item 1

One lady's handmade 18ct yellow gold engagement ring, wide, high half round, tapered shank with open back, polished finish, stamped (18ct).

One rub over set mixed cut oval shaped natural blue sapphire, colour is "medium light, strong".

Dimensions = 5.2mm(L) x 4mm(W) x 2.9mm(D-estimated)

Total Weight = 0.50ct

Twenty Eight bead set round brilliant cut diamonds, clarity is "SI1", colour is "G", very good cut quality.

Dimensions = 1.8mm(Dia) x 1.1mm(D-estimated)

Total Weight = 0.62ct estimated

Two bead set round brilliant cut diamonds, clarity is "SI1", colour is "G", very good cut quality.

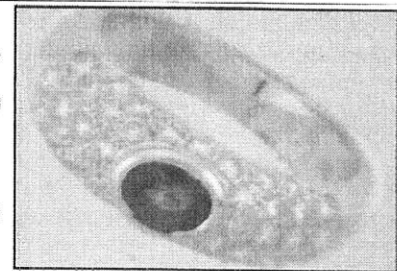
Dimensions = 2mm(Dia) x 1.22mm(D-estimated)

Total Weight = 0.06ct calculated

Eight bead set round brilliant cut diamonds, clarity is "SI1", colour is "G", very good cut quality.

Dimensions = 1.3mm(Dia) x 0.79mm(D-estimated)

Total Weight = 0.08ct calculated



Item Totals:

Total Item Weight = 4.70gm

Total Gemstone Weight = 1.26ct

Total Metal Weight = 4.45gm estimated

Insurance Replacement Valuation \$3,600.00


The total of the one item included in this valuation is Three Thousand Six Hundred dollars.

Total Value = \$3,600.00

Exchange Rates: US\$ 0.4100 Yen 43.6500 Metal Prices (US\$/ounce): Gold 284.00 Silver 5.00 Platinum 560.00

The articles described above have been examined and the values given are an expression of our opinion. Gemstones have not been removed from the settings for accurate assessment and all grades and weights are approximate, unless otherwise stated. Whilst all care has been taken in making this valuation, no liability is accepted other than to the person to whom the certificate is given for any errors or omissions, including any liability to the person by reason of negligence. Values expressed in New Zealand dollars and based on current market conditions. Photographs are not representative of actual size.

These items were valued for
 Berrys Jewellers by


HELEN GRUBI
 Valuer, FGA