



THE NATIONAL ASSOCIATION  
OF JEWELRY APPRAISERS

# Dennis D. Blacklaws

G.G. G.S.M.J.A.S., Ch.Sr.Mem (N.A.J.A.)

Gemologist - Diamond Grader - Jewellery Appraiser

**LOWER HUTT:** 10 Laings Road, Lower Hutt, 5010, New Zealand  
Phone & Fax (04) 566-3668  
**CHRISTCHURCH:** Ground Floor, 79 Cambridge Terrace, Christchurch  
Phone: (03) 365-1800 Fax: (03) 365-1801  
Email: dennis.blacklaws@gemlink.co.nz Website: www.gemlink.co.nz



The Jewellery Appraisers Society  
of N.Z. Inc

Graduate Gemologist Diploma (G.G.) Gemological Institute of America (GIA),  
Cert. Diamonds & Diamond Grading (GIA), Cert. Coloured Stone Grading - Evaluation & Identification (GIA)  
Ch.Sr.Mem (N.A.J.A.) National Assn of Jewellery Appraisers - (U.S.A.), Diploma Charter Member GIA Alumni Assn,  
Charter Senior Member (C.S.M.J.A.S.) The Jewellery Appraisers Society of N.Z. Inc, Life Member The Jewellers & Watchmakers of N.Z. Inc

Appraisal prepared for

Address



AppraisalPlus DBL06001

Ref No: 18421DB/LH19878

Date: 17 November, 2008

copyright 2007 Dennis Blacklaws Ltd

(personal  
details  
covered)

## ARTICLE

### 4. Single strand of knotted and Uniform size Pearls - type: (beaded) Cultured variety: Pinctada Fucata (Martensii) origin: Akoya brand: un-known Necklace.

Necklace presented with Metal composition analysed as 14ct Yellow gold, stamped 14K and presented with pierced and cut-out 'Lattice' design 'Navette' shaped 14.60 x 5.90mm - x 3.10mm dimension and die-struck and Millegrain patterned and 'Dome' shaped 'Push-In' type clasp, presented with white knotted Pearl thread.

Cultured (drilled) Pearls presenting regular Spherical - slight Out of Round shape, presenting White - Cream/White body colour, with Rose/Greyish Greyish/Greenish surface over-tone, with high surface lustre and high surface orient, presented under (incandescent) light, and presenting minor - slight noticeable surface blemishes.

Cultured Pearls presenting extremely thin (nuclei apparent) - thick 0.05mm - 0.50mm Nacre thickness.

Cultured Pearl Necklace presenting Good blend of Grade (4-6) quality.

**N.B.** Check single (7.00cmØ x 5.00cmØ) direct X-Ray radiograph.

N.B. Direct single X-Ray examination indicate Pearls of 'Beaded' 'Akoya' Cultured origin. For the purposes of this appraisal all Pearls appraised as Cultured Akoya.

**Total Necklace Pearls (57)**

**Strand Pearls:**

**57 x est 6.00-6.50mmØ**

It is an internationally accepted trade practice to treat Pearls, including Pearls of this variety, to enhance the Lustre, using traditional methods, i.e. polishing - although evidence of treatment is not immediately apparent in these Pearls. As present testing methods, as used by this Laboratory, may not detect the type of treatment applied, some may be assumed. This appraisal has been prepared 'ONLY' on the basis that traditional Methods have been applied.

Cultured Pearl Necklace of (17.00") Princess length.

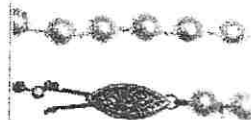
Necklace Total Weight (grams) with Total Metal Weight (0.65grams).

Necklace presenting near 'New' and Safe condition and slight 'Stretched' condition.

Photographs (X2/1).

**R.V.N. \$2,840.00**

**L.V. \$2,750.00**



CONTINUED ...//

This Appraisal-Valuation is determined by using percentage margins for Importers, Wholesalers & Retailers. The Value/s given, we consider a fair value for purpose stated, and are based on an average of the above levels. Profit margins are at the discretion of the Seller and item/s can be a matter of negotiation, and fluctuations in the exchange rate bullion prices and stone base prices. We accept no liability for variations in valuations. The quality of the stones are estimates only except where specifically stated, the stones were removed and graded. The above values are inclusive of GST.

**GEMLINK**

*Dennis D. Blacklaws*  
Dennis D. Blacklaws

This Appraisal has been prepared in conformity with generally accepted professional ethics of The Jewellery Appraisers Society of N.Z. Inc



THE NATIONAL ASSOCIATION  
OF JEWELRY APPRAISERS

# Dennis D. Blacklaws

G.G., G.S.M.J.A.S., Ch.Sr.Mem (N.A.J.A.)

Gemologist - Diamond Grader - Jewellery Appraiser

**LOWER HUTT:** 10 Laings Road, Lower Hutt, 5010, New Zealand  
Phone & Fax (04) 566-3668

**CHRISTCHURCH:** Ground Floor, 79 Cambridge Terrace, Christchurch  
Phone: (03) 365-1800 Fax: (03) 365-1801

Email: dennis.blacklaws@gemlink.co.nz Website: www.gemlink.co.nz



The Jewellery Appraisers Society  
of N.Z. Inc

Graduate Gemologist Diploma (G.G.) Gemological Institute of America (GIA),  
Cert. Diamonds & Diamond Grading (GIA), Cert. Coloured Stone Grading - Evaluation & Identification (GIA)  
Ch.Sr.Mem (N.A.J.A.) National Assn of Jewelry Appraisers - (U.S.A.), Diploma Charter Member GIA Alumni Assn,  
Charter Senior Member (C.S.M.J.A.S.) The Jewellery Appraisers Society of N.Z. Inc, Life Member The Jewellers & Watchmakers of N.Z. Inc

Appraisal prepared for

Address

(personal  
details  
covered)

Copyright 2007 Dennis Blacklaws Ltd

AppraisalPlus DBL06001

Ref No: 18421DB/LH19878

Date: 17 November, 2008

## ARTICLE

### 5. Single strand of knotted and Uniform size Pearls - type: (beaded) Cultured variety: Pinctada Fucata (Martensii) origin: Akoya brand: un-known Bracelet.

Bracelet presented with Metal composition analysed as 14ct Yellow gold, stamped 14K and presented with pierced and cut-out 'Lattice' design. 'Navette' shaped 14.60 x 5.88mm x 3.05mm dimension and die-struck and Millegrain patterned and 'Dome' shaped 'Push-In' type clasp, presented with white knotted Pearl thread.

Cultured (drilled) Pearls presenting regular Spherical - slight Out of Round shape, presenting White - Milk/White body colour, with Rose/Greyish surface over-tone, with high surface lustre and high surface orient, presented under (incandescent) light, and presenting minor surface blemishes.

Cultured Pearls presenting extremely thin (nuclei apparent) - thick 0.05mm - 0.50mm Nacre thickness.

Cultured Pearl Necklace presenting Good blend of Grade (5-7) quality.

N.B. Check single (7.00cmØ x 5.00cm) direct X-Ray radiograph.

N.B. Direct single X-Ray examination indicate Pearls of 'Beaded' 'Akoya' Cultured origin. For the purposes of this appraisal all Pearls appraised as Cultured Akoya.

Total Bracelet Pearls (25)

Strand Pearls:

25 x est 6.00-6.50mmØ

It is an internationally accepted trade practice to treat Pearls, including Pearls of this variety, to enhance the Lustre, using traditional methods, i.e. polishing - although evidence of treatment is not immediately apparent in these Pearls. As present testing methods, as used by this Laboratory, may not detect the type of treatment applied, some may be assumed. This appraisal has been prepared 'ONLY' on the basis that traditional Methods have been applied.

Cultured Pearl Bracelet of (8:00") length.

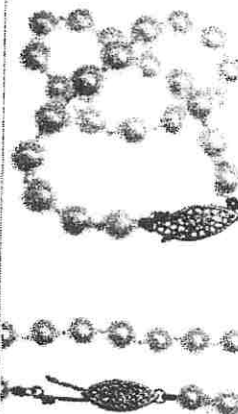
Bracelet Total Weight (9.50grams) with Total Metal Weight (0.75grams).

Bracelet presenting near as 'New' and in Safe condition and slight 'Stretched' condition.

Photographs (X2/1.).

R.V.N. \$1,770.00

L.V. \$1,680.00



CONTINUED ...//

This Appraisal-Valuation is determined by using percentage margins for Importers, Wholesalers & Retailers. The Values given, we consider a fair value for purpose stated, and are based on an average of the above levels. Profit margins are at the discretion of the Seller and item/s can be a matter of negotiation, and fluctuations in the exchange rate bullion prices and stone base prices. We accept no liability for variations in valuations. The quality of the stones are estimates only except where specifically stated, the stones were removed and graded. The above values are inclusive of GST.

GEMLINK

*Dennis D. Blacklaws*  
Dennis D. Blacklaws

"This Appraisal has been prepared in conformity with generally accepted professional ethics of The Jewellery Appraisers Society of N.Z. Inc"