

Diamond & Gem Jewellery Valuations Ltd.

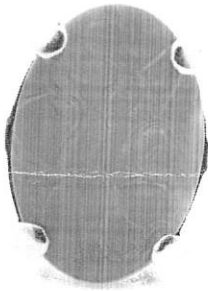
171

- M.J.V.S Valuer
- F.G.A.A Gemmologist
Diamond Grader
F.G.A Gemmologist
- DipDT Diploma diamond Technology

P/F: 03 5449293
M: 021-0625417
E: rocsnz@gmail.com
238a Queen Street, RICHMOND
NELSON, NEW ZEALAND
www.rocs.co.nz

Name:

Prepared for:

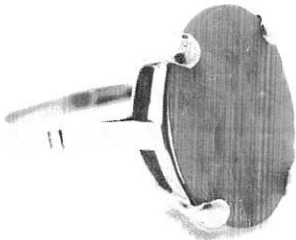


Purpose of: Insurance replacement only
Item: Jade set ring
Description: 9ct yellow gold setting stamped 375 H&SL, flat profile band tapered 2.03x0.89-ridged across shoulder and terminate in a flat top at the setting, setting double under bezel with four claws 16x11mm set with a carved jade stone

Stones: Jade **Cut:** Oval carved

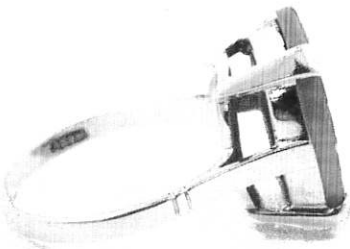
Approximate dimensions as listed below, all grades list are assessed in settings unless stated otherwise.

18.0x12.04



Colour: Deep apple green
Clarity: Opaque

Condition: Fair



Notes:

Prepared by Brett Grimwood
 F.G.A.A(3956), F.G.A.(812227) Gemmologist, Diamond Grader(3956)
 DipDT Diamond Technologist (559),
 Registered M.J.V.S valuer.

Monday, 1 November 2021

Reference:

Replacement retail: \$1,475.00

Retail pricing based on factors of the day including precious metal prices, USD to NZD exchange rates, and an average retail margin. These factors change over time and it is recommended you have your jewellery re-valued every two years to allow for these changes.

Total weight:	4.06Grams	Gem Carat weight=	Na	Diamond carat weight=	na	Exchange rate:	\$00.69-1.00NZD
Platinum:	\$1021.00USD Ounce	Gold:	\$1757.10USD Ounce	Palladium:	\$1021.00USD Ounce	Silver:	\$22.66USD Ounce

Colour
D—E—F—G—H—I—J—K—L—M—N—O

Diamond grading scale

Clarity scale
FL-IF-VVS1-VVS2-VS1-VS2-SI1-SI2-I1-I2

Disclaimer: The item(s) described above have been examined and the figures expressed are of my opinion. All stones have been assessed in the settings, the colours, sizes and grades are estimated within the limitations of the settings, these grades may vary if the stone is examined out of the setting with the owners permission and at their expense. The values here are expressed in New Zealand dollars and include G.S.T of 15%. Whilst all care is taken in the preparation of this valuation no liability is taken other than those of omission. This valuation is not intended for resale and is for the expressed purpose of replacement and insurance cover only.
 Gold and platinum prices taken from international gold and bullion dealers kitco. **F.G.A.A—Fellow Gemmological Association of Australia, F.G.A—Fellow Gemmological Association of Great Britain**
DipDT Diploma in Diamond Technology, M.J.V.S—Member Jewellery Valuers Society of New Zealand