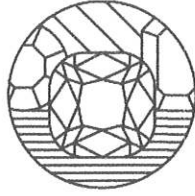


21

NICHOLAS TSALIS  
Gemmologist & Jewellery Valuer  
FGA, GAA Diamond Grading  
Member of the JVSNZ



GRAHAM OLIVER  
Gemmologist & Jewellery Valuer  
FGA, GIA Diamond Grading  
Member of the JVSNZ

W E L L I N G T O N  
J E W E L L E R Y V A L U A T I O N S

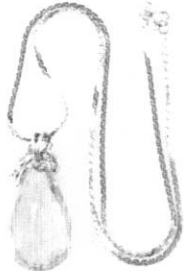
DATE COMPLETED  
APRIL 25, 2022

ITEM NUMBER  
6326-107705-1

DOCUMENT FUNCTION  
RETAIL VALUATION

PREPARED FOR:

CUSTOMER ADDRESS:  
WELLINGTON, NEW ZEALAND



**AN AQUAMARINE AND DIAMOND SET DROP PENDANT**

Assembled using cast and handmade components in 18 carat white gold, tested using XRF metal analysis  
Not stamped

The pendant features a faceted briolette Aquamarine, suspended from a white gold asymmetrical scrolled fitting, comprising four round brilliant cut diamonds in four claw settings, 14 round brilliant cut and six single cut diamonds, mill-grain set along the fitting. The back of the fitting is twin wires forming an invisible bale. The pendant is attached to a 14 carat white gold serpentine link chain measuring 1.80mm in width, 1.35mm in thickness and 45.00cm in length. The pendant measures 40.95mm in length.

Chain weight: 8.97 grams. Pendant weight: 12.29 grams

Presented in excellent condition with no signs of wear.

One (1) natural, briolette, brilliant cut, light, blue aquamarine

Species	Natural Beryl
Variety	Natural Aquamarine
Measurements	32.00mm x 19.04mm x 12.78mm in depth.
Estimated Weight	46.60 ct.
Clarity	Eye Clean (Type I)
Cut	Good

Fourteen (14) round brilliant cut natural diamonds

Measurements	1.50mm - 2.60mm in diameter x ~1.25mm in depth.
Weight Range	0.015 ct. - 0.065 ct.
Estimated Total Weight	0.400 ct.
Colour	G - I
Clarity	VS2 - SI1
Cut	Good

Six (6) single cut natural diamonds

Measurements	1.30mm in diameter x ~0.79mm in depth.
Weight Range	0.010 ct. - 0.010 ct.
Estimated Total Weight	0.060 ct.
Colour	H - I
Clarity	SI1 - SI2

**NZD \$19,990.00**

Estimated Retail Value  
\*Sales taxes are included.

*Nicholas Tsalis*

Nicholas Tsalis, FGA, GAA Diamond Cert, MJVSNZ  
Gemmologist & Jewellery Valuer

**METAL PRICES**

- Gold: NZD \$2,849.76/toz.
- Silver: NZD \$35.77/toz.
- Platinum: NZD \$1,392.77/toz.
- Palladium: NZD \$3,170.65/toz.
- USD \$1.00 => NZD \$1.51

