

Dennis Blacklaws Ltd

LOWER HUTT:

10 Laings Road, Lower Hutt, 5010, New Zealand
Phone & Fax (04) 566-3668

Email: dennis.blacklaws@gemlink.co.nz Website: www.gemlink.co.nz

Resident Appraiser/Valuer: Dennis D. Blacklaws

Gems & Jewellery Specialist - Appraiser/Valuer - Graduate Gemologist



Appraisal prepared for |
Address |

© Copyright 2021 All rights reserved
Dennis Blacklaws Ltd

AppraisalPlus DBL06001
Ref No: 22078DB/LH24977

Date: 22 September, 2021

ARTICLE

1. (Original) "One-Off" Commission, Fabricated, Bespoke/Hand-Crafted,- (3) Bezel, with (1) (single) species: Corundum colour: Blue variety: Sapphire synthesis: (Natural) object: (faceted Gemstone) phenomena: semi-transparent/semi-translucent treatment: (Enhanced) analysis: Standard - Thermal origin: Sri-Lanka (Ceylon) location: (Un-Known) and (2) species: Diamond object: (faceted) variety: Colourless synthesis: (Natural - Earth mined) treatment: (Non-enhanced) origin: Un-Known with vintage and contemporary/modernist with avant-garde style (Half-Hoop) design Ring.

Ring Metal composition analysed as Rhodium-plated on top of 18ct White gold alloy, and stamped with 750 style hall/mark.

Ring presented with Rhodium-plated on top of White gold, and plain, half (1/2) round (section), with tapered, 'polish-finish' with 2.96mm → x 2.89mm ← x 1.22-2.01mm † dimension "Seamless" style band.

Ring presented with Rhodium-Plated on top of White gold, with flow-on to cut-out with plain and 'straight' to "Point" shaped, "Plaque" and "Buttress" style "shoulder" setting, placed and applied to either side.

Ring presented with Rhodium-Plated on top of White gold, Elevated, with (1) (single) and separate Sapphire, and (4) 'double' claw and (4) 'double' and 'wire' type pillar, with flush and inset, with cut-out and pierced, "in-situ" and 'single' separate "Bezel" design, 'Oval' and "Parallel" shaped, 8.03mm → x 6.66mm ← x 1.19mm † dimension with Tension inset, type and central style mount "Assembly" setting.

Ring presented with Rhodium-Plated on top of White gold, Elevated, and (single) and separate Diamond, and (4) claw and (4) 'wire' type pillar, and flush and inset, with with cut-out and pierced, "in-situ" and 'single' separate "Bezel" design, 'Round' and "Parallel" shaped, Tension inset, type and 4.97mm Ø x 4.84mm Ø x 0.84mm † dimension and "Assembly" style mount setting, 'split-level' and placed and applied to either and 'immediate' and 'side'.

Ring presented with 17.90mm → x 8.50mm ← x 6.38mm † dimension and "Assembly" settings and placed and applied across top of cut-out and pierced, and Rhodium-Plated on top of White gold, with (14) separate "wire" type "cage-back" style 'base' and 2.35mm † height and 'curve' design "under-rail" settings, and applied and placed to and across top and centre of band.

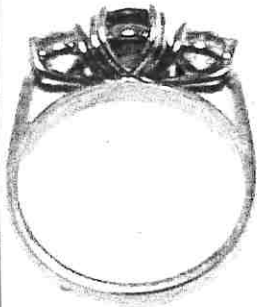
Centre Sapphire, modified, and "Oval" shaped, (mixed) cut;

1 x est 8.08 x 6.08mm Ø x 4.67mm † L.W. Ratio 1.329:1

Est by Formula 1 x est 2.120ct

(1) (single) and (Natural) Sapphire presenting semi-translucent/semi-transparent (vivid) very slight Greenish/Bluish Hue, with Tone (7) with Saturation (4) and Clarity (SI).

COPY

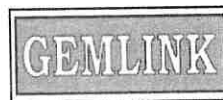


ITEM 1. CONTINUED .../

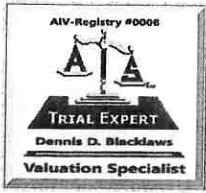
CONTINUED ...//

3/8

Dennis D. Blacklaws



This Appraisal has been prepared in conformity with accepted professional ethics of Appraisers International Society™ (USA) & The Jewellery Appraisers Society of N.Z. Inc.



Dennis Blacklaws Ltd

LOWER HUTT: 10 Laings Road, Lower Hutt, 5010, New Zealand
Phone & Fax (04) 566-3668

Email: dennis.blacklaws@gemlink.co.nz Website: www.gemlink.co.nz

Resident Appraiser/Valuer: Dennis D. Blacklaws

Gems & Jewellery Specialist - Appraiser/Valuer - Graduate Gemologist



Appraisal prepared for |
Address

ran



AppraisalPlus DBL06001

Ref No: 22078DB/LH24977

© Copyright 2021 All rights reserved
Dennis Blacklaws Ltd

Date: 22 September, 2021

ARTICLE

ITEM 1. CONTINUED .../

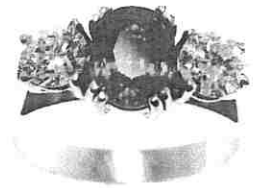
Central Sapphire, modified, and "Oval" shaped, (mixed) cut; ... CONTINUED .../

GIA ColorMaster® Notation E:00:01:97 with Colour grade (5+)

GIA GemSet® colour Analysis

(1) (single) (Natural) Sapphire presenting Good symmetry and proportions, with abraded crown facet junctions, with High surface polish and (slight) Window effect, with slight off-centre culet, with colour Banding and colour Zoning and presenting a number of internal Healing-Fracture/s, with Exsolved Boehmite and a number of Positive and Negative type Crystallites with Silk dense Epitaxially inter-grown syngenetic (complete - interrupted) Rutile, with Polysynthetic Twin Lamellae Turbulence and Zones & Nebulous (Phantom) Cloud type inclusion scenes, applying (oblique lighting) and (Immersion microscopy) technique, presented in mount.

COPY



N.B. Check Spectrometer Analysis.

It is an internationally recognised trade practice to treat gems of this variety, by various methods to enhance the colour and/or clarity,-- applying immersion Microscopy technique indicates SOME evidence is distinguishable of minor/moderate amount of "Residue" from standard Thermal-Heat/Annealing treatment is immediately apparent, internally with-in this Gem.
Extent: Minor/Moderate Stability: Stable under normal wearing conditions. Prevalence: Never/Rarely/Commonly/Usually

N.B. Positive Provenance/Origin Identification may alter assessed value of submitted Ruby. This can only be established by an International recognised Gemological Laboratory i.e. (G.I.A.) (Gubelin) and/or (GRS/SWISSLAB) specialising in (Origin) identification and/or including; (LA-ICP-MS) = (Laser Ablation Inductively Coupled Plasma Mass Spectrometry) and/or (LIBS = Laser Induced Breakdown Spectroscopy), and/or (FTIR = Fourier Transformed Spectroscopy) and is determined on the basis of concordant indications.

The availability of Goods of this type and quality is subject to negotiation and international supply and demand.

Applying assignment-specific research including examining 'facts - in - evidence' for the above item has been appraised at current market value (as is) with cognisance to the presented authentication - physical-nature, origin and quality and evaluation of the above (ENHANCED-TREATED) Sri-Lankan Sapphire - and has been appraised/valued as (Very High - Exceptional) quality

N.B. Statement/s of "Geographical Origin" included within this Appraisal are submitted by 'expert-opinion' including accumulative and analytical "Observations" and "Data" and the experience of the practitioner.

Side Diamond, (MRSBC) modern, and (Round) shaped "Brilliant" cut;

1 x est 5.24-5.18mmØ x 3.14mm ↓

Est by Formula (1 x est 0.548ct) (F or Higher) (SL)

ITEM 1. CONTINUED .../

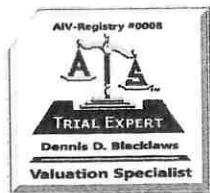
CONTINUED ...//

4/8



Dennis D. Blacklaws

This Appraisal has been prepared in conformity with accepted professional ethics of Appraisers International Society™ (USA) & The Jewellery Appraisers Society of N.Z. Inc.



Dennis Blacklaws Ltd

LOWER HUTT: 10 Laings Road, Lower Hutt, 5010, New Zealand
Phone & Fax (04) 566-3668

Email: dennis.blacklaws@gemlink.co.nz Website : www.gemlink.co.nz

Resident Appraiser/Valuer: Dennis D. Blacklaws

Gems & Jewellery Specialist - Appraiser/Valuer - Graduate Gemologist



Appraisal prepared for _____ IN
Address _____

© Copyright 2021 All rights reserved
Dennis Blacklaws Ltd

AppraisalPlus DBL06001

Ref No: 22078DB/LH24977

Date: 22 September, 2021

ARTICLE

ITEM 1. CONTINUED .../

COPY

N.B. The presented Diamond has by application and "in-situ" and applied type examination and analysis using "Ultra-Spectrum Optical Filtering" (USOF) and/or "The Diamond Trading Co" V2.03) Diamond-Sure™ and/or "SmartPro™ screening "instruments" to separate Cultured-LGD Laboratory-Grown Diamond of (HPHT) High-Pressure High Temperature and/or (CVD) Chemical Vapour Deposition Cultured (LGD) (Laboratory-Grown) and/or (treated) Diamonds - also known as (Created/Man-Made) from "Natural-Untreated" - "Earth-Mined" Diamond has indicated a Pass/Positive result for a "Natural-Untreated" - "Earth-Mined" Diamond.



Side Diamond, (MTERSBC) modified, and "Transitional" - "Early" and 'Round' shaped "Brilliant" cut;

1 x est 5.24-5.23mmØ x 3.26mm †

Est by Formula (1 x est 0.561ct) (F or Higher) (L)

N.B. (MTERSBC) Diamond presenting Out of Round and Shallow/Lumpy symmetry proportions presenting Nil off centre culet.
Diamonds presenting Normal & Acceptable cut quality for Diamonds of this period"

N.B. The presented Diamond has by application and "in-situ" and applied type examination and analysis using "Ultra-Spectrum Optical Filtering" (USOF) and/or "The Diamond Trading Co" V2.03) Diamond-Sure™ and/or "SmartPro™ screening "instruments" to separate Cultured-LGD Laboratory-Grown Diamond of (HPHT) High-Pressure High Temperature and/or (CVD) Chemical Vapour Deposition Cultured (LGD) (Laboratory-Grown) and/or (treated) Diamonds - also known as (Created/Man-Made) from "Natural-Untreated" - "Earth-Mined" Diamond has indicated a Pass/Positive result for a "Natural-Untreated" - "Earth-Mined" Diamond.

This Laboratory has applied various "in-situ" type "method/s" to "identify" the type and/or origin of the submitted Diamond/s and may include the use of some (if not all) of the following; Microscopy "examination", including analysis with cross-Nicol polarized Filters (Polariscope) (CPF) and/or the Gemtrix PL Inspector and/or the use of "SSEF classic illuminator" and/or (Neodymium) rare-earth Magnetism and/or GL Gem Spectrometer.
For the purposes of this Appraisal these Diamonds have been appraised/valued as (Natural - Earth Mined).

ITEM 1. CONTINUED .../

CONTINUED ...//

5/8



EDINBURGH ASSAY OFFICE



GIA
GEMOLOGICAL
INSTITUTE OF
AMERICA



Dennis D. Blacklaws

This Appraisal has been prepared in conformity with accepted professional ethics of Appraisers International Society™ (USA) & The Jewellery Appraisers Society of N.Z. Inc.



Dennis Blacklaws Ltd

LOWER HUTT: 10 Laings Road, Lower Hutt, 5010, New Zealand
Phone & Fax (04) 566-3668

Email: dennis.blacklaws@gemlink.co.nz Website: www.gemlink.co.nz

Resident Appraiser/Valuer: Dennis D. Blacklaws

Gems & Jewellery Specialist - Appraiser/Valuer - Graduate Gemologist



Appraisal prepared for
Address



AppraisalPlus DBL06001

Ref No: 22078DB/LH24977

© Copyright 2021 All rights reserved
Dennis Blacklaws Ltd

Date: 22 September, 2021

ARTICLE

COPY

ITEM 1. CONTINUED .../

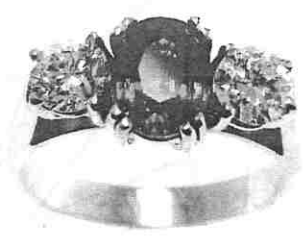
N.B. Sapphire and Diamonds graded in mounts (*in-situ*). Diamonds est Total (Est 1.109ct). Immersion Microscopy **analysis** indicates Sapphire of *Sri-Lanka* origin. Sapphire length← & width→ & depth↑ and Diamonds diameterØ & depth‡ dimension measurements estimated due to mounts. Diamonds colour **graded** under an (**ultraviolet-free**) colour/grading environment. Diamonds body colour Masked due to mounts. (MRSBC) Diamond of G.I.A. **Very Good** cut/grade. Sapphire and Diamonds **NEED** to be removed from mounts for more accurate Weight, Colour and Clarity grading and to **identify** if Clarity enhanced.

Diamonds presenting moderate – strong and cloudy - translucent with Bluish and **Fluorescent** and colour **reaction** to L.w.U.v. radiation.

Ring Total Weight (5.79grams) with Total Metal Weight (5.14grams). Ring presenting near as 'New' and Safe condition and general overall surface wear. Finger size (N:½) centre. Photographs (X2/1.).

R.M.V.N. \$22,740.00

I.M.V. \$21,800.00



Appraisal No 24977 Economic Factors for item(s) 1 - 1

Total Value R.M.V.N. N.Z. \$22,740.00

I.M.V. N.Z. \$21,800.00

N.Z. TWENTY TWO THOUSAND SEVEN HUNDRED AND FORTY DOLLARS ONLY.

N.B. Exchange Rate U.S. \$...0.6886 Gold per oz U.S. \$...1775.1 Platinum per oz U.S. \$959

Item No 1. for (courtesy) "WIKIPEDIA" REFERENCES CONTINUED .../

CONTINUED ...//

6/8



Dennis D. Blacklaws

This Appraisal has been prepared in conformity with accepted professional ethics of Appraisers International Society™ (USA) & The Jewellery Appraisers Society of N.Z. Inc.