



The Jewellery Valuer

Professional gem and jewellery appraiser

REF983246, effective date 9/08/21

© copyright, SJ Crout 2020, all rights reserved, see customer agreement page three.

Wellington Agent  
Jubilee Jewellers, 23 Waring-Taylor St. Wellington Central  
(04) 471 2961  
jubileejewellersnz@gmail.com

Net weight

= 3.7 grams

**"Specific use valuation and appraisal report"**

Jewellery appraisal and valuation service requested for the use of obtaining insurance on the item presented by  
*Not valid for resale or other uses as these may have different value opinions, see customer agreement on page three.*

**The Item, appraisal report**

One all white metal pair of rhodium plated earrings which have not been stamped. Readily apparent identification indicates the metal to be 18 ct white gold, with silver based silicon butterflies.

Each earring is cluster style with a raised rub over set diamond main diamond that is surrounded by twelve smaller diamonds which have been grain set with an outer rubbed edge. The earrings have double bezels with a bar for the peg.

These earrings have been handcrafted using a variety of techniques, which include hand assembly, using hand fabricated components with traditional hand forming, setting and finishing.

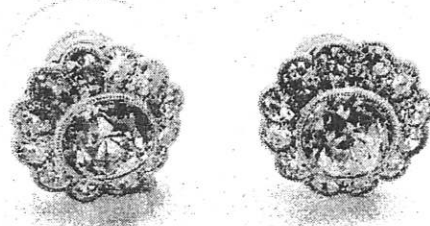
**Condition, appraisal report** Claws show up to 1% wear, Sides show up to 2% wear.

up to

**Gemmological appraisal report (with estimated characteristics)**

**One diamond is Old European cut.**

- Colour = KLM
- Dimensions = 5.65 mm x 3.67 mm deep
- Weight = 0.74cts
- Clarity = VS with large cleavage
- Crown angle = 36 degrees
- Table = 450% of the width of the diamond.
- Culet = medium to large
- Girdle = ground or faceted



**Gemmological appraisal report (with estimated characteristics)**

**One diamond is Old European cut.**

- Colour = KLM
- Dimensions = 5.60 mm x 3.64 mm deep
- Weight = 0.72 cts
- Clarity = SI /feather table to base of star facet.
- Crown angle = 36 degrees
- Table = 450% of the width of the diamond.
- Culet = medium to large
- Girdle = ground or faceted



**Small outer diamonds**

There are 24 small diamonds each is single cut. Each measures 1.90 to 2.00 mm in width, the colour and clarity grades are EFG/VS and the total weight is estimated at 0.75 cts.

**VALUATION REPORT (market explanation) with additional comments on page four.**

*This item has been most likely custom manufactured in NZ using older cut main diamonds the exact item is not available, however comparable items are available through "up market" retail manufacturing jewellery stores. It has been valued in this market for market value new.*

**Market value (new)** sometimes called **"replacement value"** for a comparable item = **\$11,500.00**

*In this case there is almost no wear however the older cut main diamonds are no longer available, plus one has been damaged and therefore an adjustment has been made to allow for this and to represent the market value of the item, in its current condition.*

**Market value (in its current condition)** sometimes called **"indemnity value"**, present day value or fair value = **\$10,200.00**

*Should you require a new and single item to be made as close as possible to the original using modern day techniques with modern equivalent cut diamonds, then please use the cost estimate value. As this represents the most likely cost to buy from a retail manufacturing jeweller as a single bespoke piece. Note this value has been arrived at using the cost approach.*

**"Cost estimate value" \$11,500.00**

See pages 2-4 for further details / definitions of values / signed customer agreement and scope of work. This valuation and appraisal should be read in its entirety.  
Accredited gems and Jewellery Valuer and Appraiser AISCV™ AVS-GJV™ (AIV-Reg #0007).

See page 2 for further details  
Charter senior member of JAANZ (Jewellery Appraisers Association of New Zealand)

Member of The Jewellers and Watchmakers Society of NZ (See notes on attached pages for more details.)  
Fellow member of Gemmological Association (Gem-A), FGA, GIA Diamonds graduate, Dg.  
Member of Goldsmiths Guild. Trade certified manufacturing Jeweller, Master Goldsmith.

Signed S J Crout.