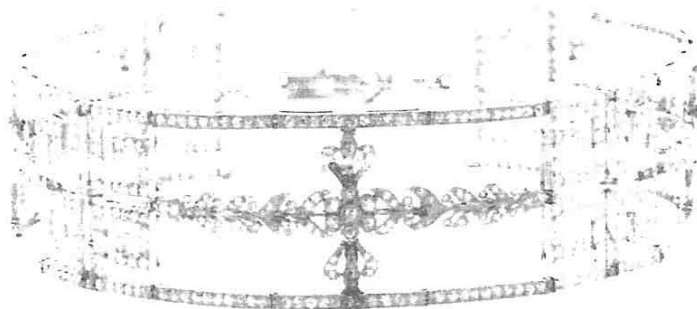
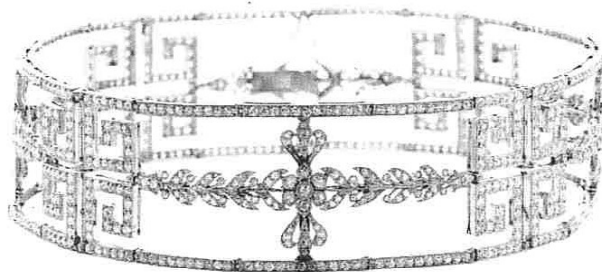


THE TOM MIX & VICTORIA FORDE COLLECTION

Tom Mix (1880-1940) was Hollywood's first leading Western movie star and is considered to have defined the genre for all Western film actors who followed. At various times he was under contract with Selig, Fox, Film Booking Office, Universal, and Mascot. Tom's repertoire extended beyond the screen to include the production, writing, and directing of hundreds of films during a 26-year career from 1909 to 1935. In 1918, Tom married fellow Western movie star Victoria Forde (his fourth wife). They had worked together on a number of films and began a love affair. Victoria starred in 170 films during her career and her jewellery collection at the time was second only to Cecil B. deMille. Mix and Forde had one daughter, Thomasina Mix, in 1922. Following the birth of their daughter, Victoria retired from the film industry. In 1940, Tom died tragically in an automobile accident. His estate was split between his wife at the time of his death, Mabel Hubble Ward, and Thomasina.

The following nine lots are items of jewellery owned and worn by Victoria Forde during her time with Tom. They have been passed down Thomasina's family through descent.





2

1 A VERY RARE AND STYLISH ART DECO PLATINUM SAPPHIRE AND DIAMOND BRACELET WATCH WITH FANCY YELLOW DIAMOND CRYSTAL

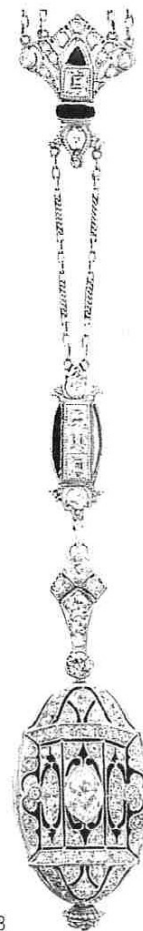
The remarkable large faceted yellow diamond crystal of estimated 12.30ct is set over a Swiss 17 jewel Deauville Watch Co. movement. Case signed by Charles Holl, a noted designer for Cartier, Paris. Bracelet comprises a continuous line of thirty eight trapezoid, square and rectangular sapphires within a border of one hundred seventy two single cut diamonds. Estimate TSW 11.80ct. TDW 6.00ct. Gemmologist's valuation available upon request.

Estimate \$30,000 - \$40,000

2 A VERY FINE AND RARE BELLE EPOQUE PLATINUM AND DIAMOND CHOKER NECKLACE

Comprising fifteen numbered and hinged sections that form four long openwork panels. Each with Greek key, swag and floral cluster motifs. Completely set with small early single cut and rose cut diamonds. This exact piece is shown in the period photograph being worn by Mrs Victoria Forde. C.1920. Length 312mm. Width 27mm.

Estimate \$20,000 - \$30,000



3

3 A FINE ART DECO PLATINUM ONYX AND DIAMOND PENDANT WATCH ON CHAIN

The Swiss oval pendant watch with pierced cover fully diamond set with floral arch and column motifs around a central marquis diamond. A spring loaded bale clip allows suspension from a fine double platinum chain with four black onyx and diamond linked panels. Watch movement overhauled.

Estimate \$3,000 - \$5,000