



# Dennis Blacklaws G.G., N.G.J.A., C.S.M.J.A.S.

Jeweller - Gemologist - Diamond Grader

3 Laings Road, Lower Hutt, New Zealand

Telephone & Fax 04 566 3668

Email: dennis.blacklaws@gemlink.net.nz

Website: www.gemlink.co.nz

35



Jewellery Appraisers Society of N. Z. Inc

18 September 2001

Ref No: 14549DB/LH14642

Dear

© Copyright 2001 Dennis Blacklaws Ltd

Enclosed is the Appraisal of your jewellery, presented to - and examined in our laboratory for Insurance purposes only, unless otherwise stated. A copy of the documents is/are enclosed, for your insurance agent, your personal legal Brief/Lawyer, and/or your personal records.

This appraisal has been produced on a 'WITHOUT PREDJUDICE' basis. The appraised item/s have been examined and researched to the best of our ability, identified, graded, and appraised at their current market retail replacement level. The figures are based upon values for individual item/s. In the preparation of this appraisal, consideration has been given to recent available retail sales information for item/s of identical or comparable quality and kind. The values represent the average replacement value new, in the typical fine jewellery store, and not applied to any one store. These values are based upon the opinions and interpretation of grades by the appraiser, along with existing market conditions, related to current bullion rates, currency exchange rates, current diamond and coloured gem international base prices, other economic and market factors and trends. The fees charged, are not related to value/s stated herein, and are only for the services of the appraisal as described. These fees do not include charges for any further/additional services that may be required/requested, amongst others - : testimony/statements to a third party, and/or any matters or claims that may arise in connection with the property described. The appraisal does not indicate title. It has been completed at the request of the above named client. The enclosed appraisal does not constitute an offer to purchase.

This presented appraisal has been prepared in conformity with the codes of (Conduct) and (Ethics) of 'The Jewellery Appraisers Society of NZ Inc'.

Diamonds, Coloured stone and Pearl grading interpretations are based upon The Gemological Institute of America (GIA) grading nomenclature, gemological test/analysis, including microscopy immersion techniques and protocols, using recognised international identification and appraisal methodology - procedures and standards, utilising 'state of the art' scientific laboratory precision equipment, including: an electronic digital (GIA) ColorMaster unit, an electronic (Austron) digital diamond Colorimeter, Master colour grading comparison Diamonds, electronic digital Gemscan (II), Gemnostic Moissketeer (2000- SD), (GIA) Diamond Lite, (GIA) Proportionscope, (Fiad) and (Soredex) X-Ray radiograph units, Pye Unicam (SP1750) Ultraviolet Spectrophotometer, Mikon-(104) and Model (12) meter with (44 - 33) Beta-Gamma probe, electronic digital balances, electronic digital measuring Gauges, electronic digital Metal test units, L.w.-S.w. Ultraviolet system, fibre Optic/Spectroscopy unit, stereo Zeiss Microscope, fibre optic units, various other analytical ancillary instruments, a customized computer appraisal/database system.

TOTAL APPRAISAL VALUE R.V.N. N.Z. \$15,000.00

I.V. N.Z. \$22,375.00

N.B. Insurance Company policy/s may be based on either, replacement value new (R.V.N.) and/or indemnity value (I.V.), therefore -any form of settlement, will depend on your type of personal policy.

We recommend all item/s, within this report, be covered by your Insurance Company for breakage/damage, theft and/or mysterious disappearance. It is also a recommendation, for you to consult with your personal Insurance agent, after receipt of this report.

Indemnity value is replacement value new - after consideration for deductions, as applied, for presenting physical condition, (viz.wear), style, market trends, and adjustments for finish of earlier cutting styles of gemstones and diamonds, and for antique/estate jewellery.

The presented digital/polaroid photographs, as to size and colour, are a representation only, due to the limits of printing and/or photographic processes. Photographs, Diamond/Coloured stone reports, colorimeter colour grading certificates, and direct x-ray radiographs, that maybe included with this report, are a support reference, in the event of a claim under your insurance policy, must be retained by you. We retain a database copy of documents/photographs only. All information regarding this appraisal is confidential - we do not permit access to them without your authorisation.

Furthermore, this appraisal, or parts of this appraisal, is not to be reproduced, and/or used for the purposes of advertising and/or marketing and/or any type of promotional use, in any way - without the express permission of the appraiser.

We strongly advise you to have your jewellery settings, ie. claws and clasps, annually checked for wear, and the same to be endorsed on your appraisal, this will assist in any claim/s, that may arise in the future. Quote your appraisal number in all communications related to this appraisal.

Gemological Institute of America(GIA) diamond grading nomenclature scale used by this laboratory.

Colour D-E-F-G-H-I-J-K-L-M-N-O-P Q >>>> Z >>>> Fancy Colours  
Clarity FL-IF-VVS1-VVS2-VS1-VS2-SI1-SI2-I1-I2-I3 Cut/Make symmetry proportions = (1) - (2) - (3) - (4) A. or B.

APPRAISALS ARE NOT VALID FOR RESALE PURPOSE UNLESS OTHERWISE STATED.

Cordially;

Dennis Blacklaws, G.G., N.G.J.A., C.S.M.J.A.S.

Cert. Diamonds & Diamond Grading (GIA) Cert. Coloured Stone Grading - Evaluation & Identification (GIA) Graduate Gemologist Diploma G.G.(GIA) (Gemological Institute of America) Member Jewellers & Watchmakers of N.Z. Inc Charter Senior Member N.G.J.A. (National Assn of Jewelry Appraisers - U.S.A.) Diploma Charter Member GIA Alumni Assn, Charter Senior Member C.S.M.J.A.S. (Jewellery Appraisers Society of N.Z. Inc)

GEMLINK



# Dennis Blacklaws G.G., N.G.J.A., C.S.M.J.A.S.

Jeweller - Gemologist - Diamond Grader

3 Laings Road, Lower Hutt, New Zealand

Telephone & Fax 04 566 3668

Email:dennis.blacklaws@clear.net.nz



Jewellery Appraisers Society of N.Z. Inc

Cert. Diamonds & Diamond Grading (GIA) Cert. Coloured Stone Grading - Evaluation & Identification (GIA)  
Graduate Gemologist Diploma G.G.(GIA) (Gemological Institute of America) Member Jewellers & Watchmakers of N.Z. Inc  
Charter Senior Member N.G.J.A. (National Assn of Jewelry Appraisers - U.S.A.) Diploma Charter Member GIA Alumni Assn,  
Charter Senior Member C.S.M.J.A.S. (Jewellery Appraisers Society of N.Z. Inc)

RAISAL  
JEWELLERY

Property of \_\_\_\_\_  
Address . \_\_\_\_\_

© Copyright 2001 Dennis Blacklaws Ltd

Ref No: 14549DB/LH14642

N.B. R.V.N. = Replacement Value New  
I.V. = Indemnity Value  
18 September 2001

DESCRIPTION OF ARTICLE	VALUES
<p><b>Imported Cast and Assembled (27) Corundum - variety: (natural) Sapphire and (49) Diamond drop Pendant/Necklace Suite.</b></p> <p>Electronic digital metal tested 18ct Yellow gold medium diamond-cut Curb link (5:00") and (4:1/4") dimension Necklet chain attached to either end of central 'Suite' setting, and fitted with standard Caribiner (15.40 x 6.00mm) type clasp. Necklets attached to Electronic digital metal tested 18ct Yellow gold, Elevated, (21) Sapphire, (21) x (4) claw set, oval shaped and taper design, double 'Bezel' type (6.10-4.90 x 5.00-3.60 x 4.00-4.20mm) dimension mount settings, with (28) separate Diamonds, round shaped, (28) x (4) claw and (28) x (4) pillar mount (3.00 x 3.55mm) dimension, double 'Bezel' type mount settings, set along length of 'Suite'. Necklace Suite set with Elevated, (7) Sapphire, (7) x (4) claw set, oval shaped, taper design (19.00-17.35 x 5.25-3.70 x 4.70-4.50mm) dimension, double 'Bezel' type and (15) separate Diamonds, round shaped, (15) x (4) claw and (15) x (4) pillar double 'Bezel' type drop mount settings, hinge attached below strip Suite setting.</p> <p><u>Sapphires.</u> Oval shaped mixed cut, ( 27 x est 6.61-4.85 x 5.16-4.35 x 3.53-2.03mm)</p> <p>Sapphires presenting Blue Hue with Tone (7-9) and Saturation (3-5) with Clarity (SI-1). Sapphires presenting strong Colour Banding and Colour Zoning and presenting Window effect.</p> <p>It is an internationally accepted trade practice to treat gems of this variety to enhance the colour and clarity, - although evidence of treatment is not immediately apparent in this gem, some may be assumed.</p> <p><u>Diamonds,</u> round Brilliant cut, ( 49 x est 2.55-2.65 x 1.75-1.51mm)</p> <p>Est by Formula ( 25 x est 0.06ct) and ( 24 x est 0.07ct) (H-J) (VSi)</p> <p>N.B. Diamonds and Sapphire graded in mounts. Diamond est Total (Est 3.18ct). Diamonds and Sapphires dimension measurements estimated due to mounts. Diamonds body colour Masked due to yellow gold mounts. Diamonds of G.I.A. make (2B-3A) symmetry proportions. Diamonds and Sapphires NEED to be removed from mounts for more accurate Weight, Colour and Clarity grading and to identify if Clarity or Colour enhanced.</p> <p>Diamonds presenting assorted weak - moderate cloudy Bluish/Violetish Violetish/Bluish and Bluish Fluorescent colour reaction to L.w.U.v. radiation. Necklace Suite Total Weight (37.80grams) with Total Metal Weight (33.86grams). Necklace Suite presenting near New condition. Photographs (X4).</p>	<p>R.V.N. \$15,000.00</p> <p>I.V. \$15,000.00</p> <p><i>Dennis Blacklaws</i> Appraiser: G.G., N.G.J.A., C.S.M.J.A.S. "This appraisal has been prepared in conformity with generally accepted professional ethics of the Jewellery Appraisers Society of N.Z. Inc."</p>

CONTINUED .../

Appraisal-Valuation is determined by using percentage margins for Importers, Wholesalers & Retailers. The value/s we consider a fair value for purpose stated, and are based on an average of the above levels. Profit margins are at the discretion of the Seller and item/s can be a matter of negotiation, and fluctuations in the exchange rate, bullion prices and stone base prices. We accept no liability for variations in valuations. The quality of the stones are estimates only and where specifically stated, the stones were removed and graded. The above values are inclusive of GST.





# Dennis Blacklaws G.G., N.G.J.A., C.S.M.J.A.S.

Jeweller - Gemologist - Diamond Grader

3 Laings Road, Lower Hutt, New Zealand

Telephone & Fax 04 566 3668

Email: dennis.blacklaws@clear.net.nz



Jewellery Appraisers Society of N. Z. Inc

Cert. Diamonds & Diamond Grading (GIA) Cert. Coloured Stone Grading - Evaluation & Identification (GIA)  
 Graduate Gemologist Diploma G.G.(GIA) (Gemological Institute of America) Member Jewellers & Watchmakers of N.Z. Inc  
 Charter Senior Member N.G.J.A. (National Assn of Jewelry Appraisers - U.S.A.) Diploma Charter Member GIA Alumni Assn.  
 Charter Senior Member C.S.M.J.A.S. (Jewellery Appraisers Society of N.Z. Inc)

JASNZ  
 JEWELLERY

Property of

Address .

Ref No: 14549DB/LH14642

© Copyright 2001 Dennis Blacklaws Ltd

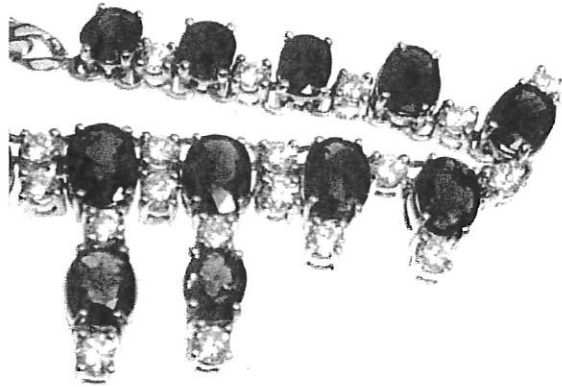
B. R.V.N. = Replacement Value New

I.V. = Indemnity Value

18 September 2001

DESCRIPTION OF ARTICLE

VALUES



Appraisal No14642 Economical Factors for item 1 - 2

N.B. Exchange Rate U.S. \$.0.4180  
 Gold per oz U.S. \$...286.30  
 Platinum per oz U.S. \$...474.00  
 Total Value N.Z. R.N.V. \$15,000.00  
 I.V. \$22,375.00

N.Z. TWENTY TWO THOUSAND THREE HUNDRED AND SEVENTY FIVE DOLLARS ONLY.

*Blacklaws*

Appraiser: G.G., N.G.J.A., C.S.M.J.A.S.

"This appraisal has been prepared in conformity with generally accepted professional ethics of the Jewellery Appraisers Society of N.Z. Inc."



Appraisal-Valuation is determined by using percentage margins for Importers, Wholesalers & Retailers. The value/s we consider a fair value for purpose stated, and are based on an average of the above levels. Profit margins are at the discretion of the Seller and item/s can be a matter of negotiation, and fluctuations in the exchange rate, bullion prices are based on the base prices. We accept no liability for variations in valuations. The quality of the stones are estimates only unless specifically stated, the stones were removed and graded. The above values are inclusive of GST.