

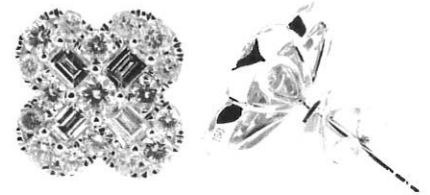
November 22, 2021

41

EJL  
021 1092681

**VALUATION ON NEW ITEM FOR SALE**

Ref: GL21L284 4/9



**CDE0705A: EARRINGS: New, modern diamond cluster studs.**

Total Weight = 4.53 grams.

MOUNTS.... are assembled cast in rhodium plated 18ct white gold (alloyed with copper nickel & zinc), as tested by XRF metal analysis, stamped "18K" on the scrolls.

14.1 mm clover shaped cluster heads with pierced basket backs and wire posts with friction scrolls.

NATURAL DIAMONDS... Eight are grain/post set, baguette cut, approx 3.4 x 2.2 mm, reported to total 0.84 carats, with quality assessed in the setting as Very Good major symmetry, G-I colour, VVS-VS clarity.

NATURAL DIAMONDS... Two are 4 claw set and 32 are claw/grain set, round brilliant cut, approx 2.1 to 2.7 mm, reported to total 1.58 carats, with quality assessed in the setting as Very Good to Good make, G-I colour, SI-I2 clarity.

Diamond Grading Scales in descending order of quality/value

Make : Excellent - Very Good ----Good ----- Fair ----- Poor  
 Colour : D--E--F -- G -- H -- I -- J --- K ---- L ---- M ---- N ---- O .. Z  
 Clarity : IF - VVS1 - VVS2 - VS1 - VS2 -- SI1 -- SI2 - SI2/I1 - I1 -- I2 - I3

**\$7800.00** Retail Market Value

THIS VALUATION REPORT is prepared for the purpose of retail comparison but may also be used to arrange initial insurance cover. It should be personalised & updated for insurance purposes within a year of purchase. This can be arranged by phoning your GemLab agent above.

RETAIL MARKET VALUE = Our opinion of the likely price range this new item would sell in, without compulsion or conditions, to a consumer with knowledge of all the relevant facts, in the most common retail market for similar quality new items, and given appropriate marketing & time to effect a sale.

Metals in \$US/oz : Gold = 1800, Plat = 1050 ; Economics : \$NZ1 = \$US0.69 & \$AUS0.94, GST = 15 %

Declaration: GemLab Jewellery Valuers are totally independent and as such have no financial interest in the subject property or bias with respect to any party. Our fees are based on an hourly rate and are not contingent on outcomes.



**Paul Nilsson** FGA distinction, GIA Gemologist, Member JVSNZ, GANZ, NAJA, NZILA, ANZIIF  
42 Constellation Drive, Mairangi Bay 0632

PO Box 305299, Triton Plaza, Auckland 0757, New Zealand

Phone: +64 9 48 999 19 • Fax: +64 9 48 999 24 • info@gemlab.co.nz • www.gemlab.co.nz