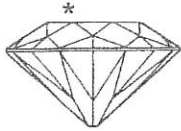


66

35



Knowledge & Integrity
MEMBER OF JEWELLERS
& WATCHMAKERS OF NZ

AN INDEPENDENT JEWELLERY APPRAISAL

Graham Oliver
Jewellery Appraiser

FGA Fellow of Gemmological Association of Great Britain
GIA (Dia Cert) Gemmological Institute of America

CUSTOMER:

ADDRESS:

DATE:

23 March 2009

AGENT:

Jewellery Valuations Ltd, Mahara Place, Waikanae

RETAIL NEW REPLACEMENT

1 x PANTHER BROOCH

Cast component and hand finished in 9ct Yellow Gold
Stamped 375

Brooch dimensions: 60.00mm x 20.00mmØ x 5.00mm†

Hollow backed, polished finish

Presented with a hinged gold pin and roller safety catch

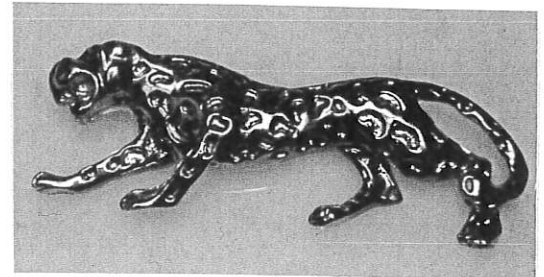
The panther is in a 'crouching position'
With indented spots

The panther presents one 1.50mmØ round Ruby
Set in the eye- mixed cut, of deep color

Total weight overall: 14.30 grams

Presented in new condition

(see attached photograph)



NEW REPLACEMENT \$ 2,450.00

\$US-0 \$NZ 0.5100 Gold \$US 920 Platinum \$US 1070

Signed:

see inside of cover for conditions relating to this valuation

Diamond Grading Scales in descending order of quality/value:

Make: Ideal - Excellent - Very Good - Good - Medium - Fair - Poor

Colour: D - E - F - G - H - I - J - K - L - M - N - O ... Z

Clarity: IF - VVS1 - VVS2 - VS1 - VS2 - SI1 - SI2 - I1 - I2 - I3