

68

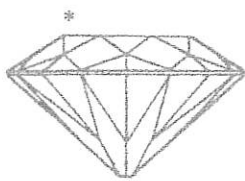
AN INDEPENDENT JEWELLERY APPRAISAL

Nicholas Tsalis

Gemmologist & Jewellery Appraiser

FGA - Fellow of Gemmological Association of Great Britain

GAA (Dia Cert) Gemmological Association of Australia



Graham Oliver

Gemmologist & Jewellery Appraiser

FGA - Fellow of Gemmological Association of Great Britain

GIA (Dia Cert) Gemmological Institute of America

Knowledge and Integrity
MEMBERS OF JEWELLERS & WATCHMAKERS OF NZ
MEMBERS OF JEWELLERY VALUERS SOCIETY OF NZ

CUSTOMER:

ADDRESS:

DATE: 3 October 2019

AGENT: Wellington Jewellery Valuations Limited, 2nd Floor, 111 Customhouse Quay, Wellington

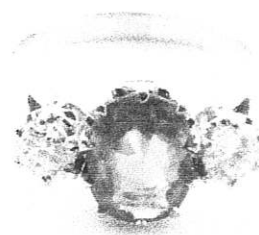
RETAIL NEW REPLACEMENT

A BLUE SAPPHIRE AND DIAMOND THREE STONE RING

Component and hand assembled in 18 carat white gold

Stamped: 18ct

The ring features an oval mixed cut natural Blue Sapphire in a 10-claw Mathey styled coronet setting and a round brilliant cut diamond in an 8-claw Mathey styled coronet setting on either side, all soldered to under-bezels and joined to a tapered band with upswept pointed shoulders and a flat profile. The band measures 2.53-2.82mm in width, 0.79-1.08mm in thickness and the settings measure 10.22 x 7.71 x 5.56mm (centre) and 5.38 x 5.36mm (sides).



The Sapphire: One, Oval mixed cut

Measurements: 9.22 x 6.66 x 3.36mm

A light blue Sapphire with a light to moderate saturation, slightly included, a fair lustre, poorly cut pavilion facets and finish. Of commercial grade.

Estimated carat weight: 1.86ct



The Diamonds: Two, Round brilliant cut

Measurements: 4.30 x 2.50mm

Colour grade: G-H

Clarity grade: VS2-SI1

Cut grade: Good

Estimated total carat weight: 0.56ct



Finger size: P

Total weight: 4.51 grams

Presented in very good condition

Note: Due to the poor cut grade, the Sapphire is showing a very large window effect.

Replacement value is based on a Sapphire of equivalent cut grade.

NEW REPLACEMENT \$7,500.00

\$US-\$NZ 0.62 Gold \$NZ2330.00 Platinum \$NZ1336.00 Palladium \$NZ2259.00 Silver \$NZ26.59

Signed:

See inside of cover for conditions relating to this valuation