



Westenra
JEWELLERY
VALUERS

88

Date: 6 September 2012
Appraisal No: 6410
Customer No: 15753
Page: 3 of 6

Item 3

One lady's handmade 14ct rose & yellow gold multi stone set ring, continuous flat & tapered 5.95 to 3.0mm shank, tiered bezel & claw settings (x6), polished finish, stamped (14K).

Two claw set mixed cut round blue topazes, colour is "light, very slightly grayish", clarity is "Type I - SI2 to I2".

Dimensions = 4.7mm(Dia) x 2.6mm(D-estimated) (smallest)

Dimensions = 5.4mm(Dia) x 3.7mm(D-estimated) (largest)

Total Weight = 1.30ct calculated

Two claw set mixed cut round natural rubies, colour is "medium to medium-light, moderately strong to strong, strongly purplish red", clarity is "Type II - SI to I2".

Dimensions = 3.8mm(Dia) x 1.8mm(D-estimated) (smallest)

Dimensions = 4.2mm(Dia) x 2.8mm(D-estimated) (largest)

Total Weight = 0.60ct calculated

One claw set mixed cut round natural blue sapphire, colour is "medium, very slightly grayish, greenish blue", clarity is "Type II - VS".

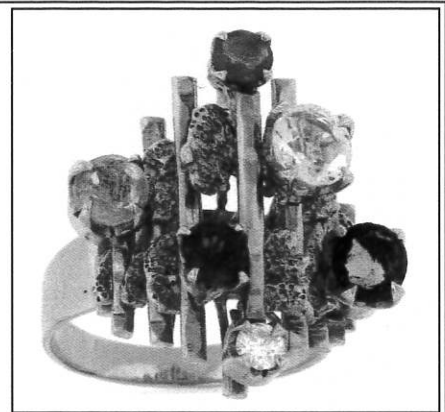
Dimensions = 5.2mm(Dia) x 2.6mm(D-estimated)

Total Weight = 0.51ct calculated

One claw set round brilliant cut diamond, clarity is "I1", colour is "H-I", good cut quality.

Dimensions = 3mm(Dia) x 1.8mm(D-estimated)

Total Weight = 0.10ct calculated



Item Totals:

Total Item Weight = 8.76gm

Total Gemstone Weight = 2.51ct

Total Metal Weight = 8.26gm estimated

Condition : near new.

Manufacturing standard : medium.

Insurance Replacement Appraisal \$4,700.00

continued on next page...