

August 6, 2021

GemLab - EJL

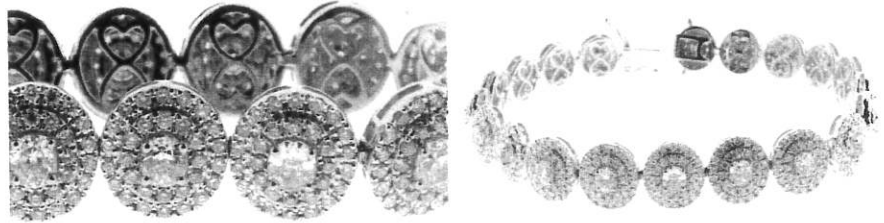
88

2
GemLab

JEWELLERY VALUATION & PROTECTION

VALUATION ON NEW ITEM FOR SALE

Ref: GL21H130 3/11



BRACELET: New, modern diamond cluster style.

Total Weight = 30.49 grams.

MOUNT.... is assembled cast in 18ct yellow gold, as tested by XRF metal analysis, stamped "750 D872". 19cm long, 10.4 mm wide, the bracelet is comprised of 20 oval clusters linked together onto a hidden box clasp with 2x safety clips. The outer row of micro-claw setting in each cluster is rhodium plated.

NATURAL DIAMONDS... 360 are micro-claw set, round brilliant cut, approx 1.1 - 1.2 mm, reported to total 2.51 carats, with quality assessed in the setting as Good make, F to J colour, SI2 to I2 clarity.

NATURAL FANCY COLOUR DIAMONDS... 20 are 4 claw set, oval brilliant cut, approx 3.8 - 4.0 x 3.2 - 3.4 mm, reported to total 4.34 carats, with quality assessed in the setting as Good make, Fancy Yellow colour, SI2-I1 clarity.

NATURAL FANCY COLOUR DIAMONDS... 240 are micro-claw set, round brilliant cut, approx 1.1 - 1.2 mm, reported to total 1.88 carats, with quality assessed in the setting as Good make, Fancy Yellow colour, SI-I2 clarity.

Diamond Grading Scales in descending order of quality/value

Make : Excellent - Very Good ----Good ----- Fair ----- Poor
Colour : D--E--F -- G -- H -- I -- J --- K ---- L ---- M ---- N ---- O .. Z
Clarity : IF - VVS1 - VVS2 - VS1 - VS2 -- SI1 -- SI2 - SI2/I1 - I1 -- I2 - I3

\$34000.00 Retail Market Value

THIS VALUATION REPORT is prepared for the purpose of retail comparison but may also be used to arrange initial insurance cover. It should be personalised & updated for insurance purposes within a year of purchase. This can be arranged by phoning your GemLab agent above.

RETAIL MARKET VALUE = Our opinion of the likely price range this new item would sell in, without compulsion or conditions, to a consumer with knowledge of all the relevant facts, in the most common retail market for similar quality new items, and given appropriate marketing & time to effect a sale.

Metals in \$US/oz : Gold = 1800, Plat = 1140 ; Economics : \$NZ1 = \$US0.69 & \$AUS0.91, GST = 15 %

Declaration: GemLab Jewellery Valuers are totally independent and as such have no financial interest in the subject property or bias with respect to any party. Our fees are based on an hourly rate and are not contingent on outcomes.

Paul Nilsson FGA distinction, GIA Gemologist, Member JVSNZ, GANZ, NAJA, NZILA, ANZIIIF
42 Constellation Drive, Mairangi Bay 0632

PO Box 305299, Triton Plaza, Auckland 0757, New Zealand
Phone: +64 9 48 999 19 • info@gemlab.co.nz • www.gemlab.co.nz