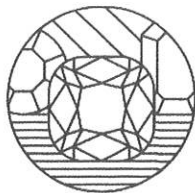


168

NICHOLAS TSALIS
Gemmologist & Jewellery Valuer
FGA, GAA Diamond Grading
Member of the JVSNZ



W E L L I N G T O N

J E W E L L E R Y V A L U A T I O N S

GRAHAM OLIVER
Gemmologist & Jewellery Valuer
FGA, GIA Diamond Grading
Member of the JVSNZ

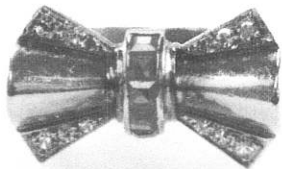
DATE COMPLETED
AUGUST 7, 2022

ITEM NUMBER
6326-108989-1

DOCUMENT FUNCTION
RETAIL VALUATION

PREPARED FOR

CUSTOMER ADDRESS
WELLINGTON, NEW ZEALAND



A SYNTHETIC RUBY AND DIAMOND SET VINTAGE BOW RING

Hand assembled in 18 carat yellow gold, tested using XRF metal analysis
Not stamped

Comprised of five channel set square step cut synthetic rubies and 12 grain set single cut diamonds in a bow motif design and joined to a tapered flat band. The band measures 5.20-12.02mm in width and 0.59mm in thickness.

Finger size: M. Item weight: 7.19grams.

Presented in good condition, showing slight signs of wear.

Five (5) synthetic, square-shaped, step cut, , strong pinkish red rubies

Species	Synthetic Corundum
Variety	Synthetic Ruby
Measurements	2.20mm x 2.20mm x ~1.36mm in depth.
Weight Range	0.063 ct. - 0.063 ct.
Estimated Total Weight	0.25 ct.
Clarity	Eye Clean (Type II)
Cut	Good

Twelve (12) single cut natural diamonds

Measurements	1.20mm - 1.50mm in diameter x ~0.82mm in depth.
Weight Range	0.008 ct. - 0.015 ct.
Estimated Total Weight	0.100 ct.
Comments	Diamonds are of commercial grade.

METAL PRICES

- Gold: NZD \$2,819.34/toz.
- Silver: NZD \$31.82/toz.
- Platinum: NZD \$1,423.99/toz.
- Palladium: NZD \$3,166.38/toz.
- USD \$1.00 => NZD \$1.60

NZD \$5,000.00

Estimated Retail Value
*Sales taxes are included.

Nicholas Tsalis

Nicholas Tsalis, FGA, GAA Diamond Cert, MJVSNZ
Gemmologist & Jewellery Valuer