

Diamond & Gem Jewellery Valuations Ltd.

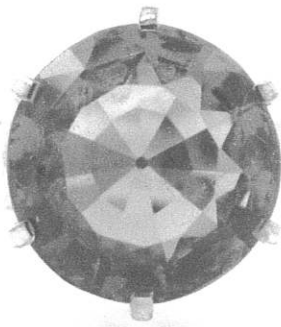
135 248

- M.J.V.S Valuer
- F.G.A.A Gemmologist
Diamond Grader
F.G.A Gemmologist
- DipDT Diploma diamond Technology

P/F: 03 5449293
M: 021-0625417
E: rocsnz@gmail.com
238a Queen Street, RICHMOND
NELSON, NEW ZEALAND
www.rocs.co.nz

Name:

Prepared for:



Purpose of:

Insurance replacement only

Item:

Citrine set ring

Description

9ct gold stamped 9ct RODD402, low D profile parallel band 5.95x1.26mm with a setting of parallel bezel 14.75x4.30mm(no ring rail cut in) with 6 evenly space claws (1.55x7.35mm)

Stones:

Citrine

Cut: Round mixed cut

Approximate dimensions as listed below, all grades list are assessed in settings unless stated otherwise.

15.37x9.17mm, estimated carat weight=

11.35carats

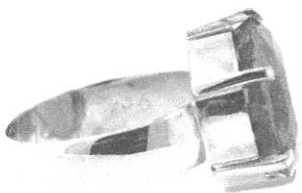


Colour: Golden orange yellow

Clarity: Eye clean

Condition:

Very good



Notes:

Replacement retail: \$1,795.00

Retail pricing based on factors of the day including precious metal prices, USD to NZD exchange rates, and an average retail margin. These factors change over time and it is recommended you have your jewellery revalued every two years to allow for these changes.

Prepared by Brett Grimwood
F.G.A.A(3956), F.G.A.(812227) Gemmologist, Diamond Grader(3956)
DipDT Diamond Technologist(559),
Registered M.J.V.S valuer.

Tuesday, 1 February 2022
Reference:

Total weight:	7.87Grams	Gem Carat weight=	11.35carats	Diamond carat weight=	na	Exchange rate:	\$00.67-1.00NZD
Platinum:	\$1020.00USD Ounce	Gold:	\$1797.50USD Ounce	Palladium:	\$2296.00USD Ounce	Silver:	\$22.42USD Ounce

Colour
D—E—F—G—H—I—J—K—L—M—N—O

Diamond grading scale

Clarity scale
FL-IF-VVS1-VVS2-VS1-VS2-SI1-SI2-I1-I2

Disclaimer: The item(s) described above have been examined and the figures expressed are of my opinion. All stones have been assessed in the settings, the colours, sizes and grades are estimated within the limitations of the settings, these grades may vary if the stone is examined out of the setting with the owners permission and at their expense. The values here are expressed in New Zealand dollars and include G.S.T of 15%. Whilst all care is taken in the preparation of this valuation no liability is taken other than those of omission. This valuation is not intended for resale and is for the expressed purpose of replacement and insurance cover only.
Gold and platinum prices taken from international gold and bullion dealers kitco. F.G.A.A—Fellow Gemmological Association of Australia, F.G.A—Fellow Gemmological Association of Great Britain
DipDT Diploma in Diamond Technology, M.J.V.S—Member Jewellery Valuers Society of New Zealand