

282

45

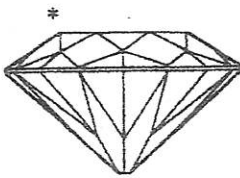
# AN INDEPENDENT JEWELLERY APPRAISAL

Nicholas Tsalis

Jewellery Appraiser

FGA - Fellow of Gemmological Association of Great Britain

GAA (Dia Cert) Gemmological Association of Australia



Graham Oliver

Jewellery Appraiser

FGA - Fellow of Gemmological Association of Great Britain

GIA (Dia Cert) Gemmological Institute of America

Knowledge and Integrity  
MEMBERS OF JEWELLERS & WATCHMAKERS OF NZ  
MEMBERS OF JEWELLERY VALUERS SOCIETY OF NZ

**CUSTOMER:**

**ADDRESS:**

**DATE:** 7 August 2018

**AGENT:** Wellington Jewellery Valuations Limited, 2nd Floor, 111 Customhouse Quay, Wellington

**RETAIL NEW REPLACEMENT**

**1 x ESTATE DIAMOND CLUSTER RING**

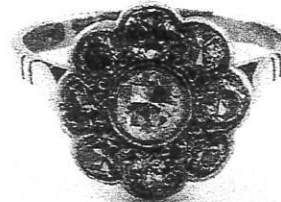
Handmade in 18 carat white gold

Stamped: 18K, A10, A&M

**The Band:** A polished flat profile with ribbed and upswept reverse pointed shoulders and under rail support. Width: 1.54 – 1.87mm, Thickness: 0.86mm

**The Setting:** A circular wire back styled cluster with an old European cut diamond in a round bezel central setting and 8 diamonds forming the cluster surround in a grain and part rub over styled setting arrangement.

The setting measures 10.14 x 4.11mm



**Centre Diamond:** 1, Old European cut

Dimensions: 3.50 x 2.40mm

Colour grade: H-I Clarity grade: I1

Cut grade: Fair

Estimated weight: 0.15ct

**The Cluster Diamonds:** 2, Round Brilliant cut  
6, single cut

Dimensions: 2.50mm

Colour grade: H-J Clarity grade: I1-I2

Estimated total weight: 0.48ct

Total ring weight: 2.04 grams

Finger size: G 1/2

Presented in good condition

Reference: WH8818-2

NEW REPLACEMENT \$ 3,250.00

\$US-\$NZ0.7100

Gold \$NZ1736.00

Platinum \$NZ1285.00

Palladium \$NZ1193.00

Silver \$NZ23.00

Signed:

See inside of cover for conditions relating to this valuation