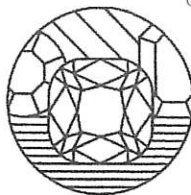


NICHOLAS TSALIS  
Gemmologist & Jewellery Valuer  
FGA, GAA Diamond Grading  
Member of the JVSNZ



W E L L I N G T O N  
J E W E L L E R Y V A L U A T I O N S

308 (23)  
GRAHAM OLIVER  
Gemmologist & Jewellery Valuer  
FGA, GIA Diamond Grading  
Member of the JVSNZ

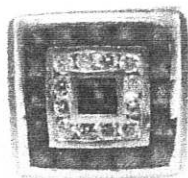
DATE COMPLETED  
DECEMBER 15, 2021

ITEM NUMBER  
6326-106436-1

DOCUMENT FUNCTION  
INSURANCE APPRAISAL

PREPARED FOR:

CUSTOMER ADDRESS  
WELLINGTON, NEW ZEALAND



**A BLUE SAPPHIRE AND DIAMOND SET SIGNET RING**

Hand assembled in 18ct yellow gold, tested using XRF metal analysis

The ring features one bezel set central square blue sapphire, and two outer halos comprising 12 channel set round brilliant cut diamonds and 16 channel set square cut blue sapphires in a radial pattern on a flat signet head on a tapered band with a flat profile. The band measures 3.17-12.74mm in width, 1.18mm in thickness and the signet head setting measures 11.60 x 11.71 x 3.84mm.

Finger size: R1/2. Item weight: 9.43grams.

Presented in very good condition, showing minimal signs of wear.

Seventeen (17) natural, square-shaped, step cut, sapphires

Species:	Natural Corundum
Variety:	Natural Sapphire
Measurements:	2.25mm x 2.25mm x ~1.40mm in depth.
Weight Range:	0.048 ct. - 0.093 ct.
Estimated Total Weight:	1.35 ct.
Cut Style: Crown:	Step Cut
Cut Style: Pavilion:	Step Cut
Tone:	Medium-dark
Colour(s):	Blue
Clarity:	Eye Clean - Slightly Included (Type II)
Cut:	Good

Twelve (12) round brilliant cut natural diamonds

Measurements:	1.40mm - 1.40mm in diameter x ~0.85mm in depth.
Weight Range:	0.013 ct. - 0.013 ct.
Estimated Total Weight:	0.168 ct.
Colour:	G - H
Clarity:	SI1 - SI2
Cut:	Good

**NZD \$6,000.00**

Estimated Retail Replacement Value  
\*Sales taxes are included.

*Nicholas Tsalis*

Nicholas Tsalis, FGA, GAA Diamond Cert, MJVSNZ  
Gemmologist & Jewellery Valuer

**METAL PRICES**

- Gold: NZD \$2,622.88/toz.
- Silver: NZD \$32.38/toz.
- Platinum: NZD \$1,339.63/toz.
- Palladium: NZD \$2,293.59/toz.
- USD \$1.00 => NZD \$1.48