

Date: 28 May 2008
Appraisal No: 8JY50842
Customer No: 10834
Page: 1 of 2

Insurance Appraisal.

Item 1

One lady's hand-assembled diamond set 18ct yellow gold & platinum three stone ring, narrow, flat, parallel shank with collet style underrail, extended shoulders fancy claw millgrain style platinum, 6 claw setting (x3), polished finish, stamped (PLAT 18CT).

One claw set round brilliant cut diamond, clarity is "I1", colour is "I-J", medium cut quality.

Dimensions = 4.95mm(Dia) x 3.02mm(D-estimated)

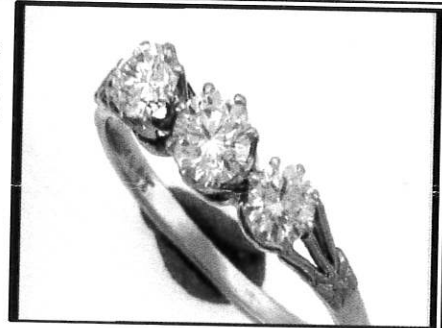
Total Weight = 0.45ct

Two claw set round brilliant cut diamonds, clarity is "I1", colour is "H-J", medium to fair cut quality.

Dimensions = 4.18mm(Dia) x 2.55mm(D-estimated) (smallest)

Dimensions = 4.35mm(Dia) x 2.65mm(D-estimated) (largest)

Total Weight = 0.61ct estimated



Item Totals:

Total Item Weight = 2.80gm

Total Gemstone Weight = 1.06ct

Total Metal Weight = 2.59gm estimated

Comments:

*Item shows some wear and secure for now.

Cut/Make: The "Cut-Class" grading system used (by Independent Jewellery Appraisers Ltd) now shows only an opinion on its appearance, proportions, symmetry and performance based light return using an "Ideal-Scope" & AGS" (American Gem Society) 'ASET' scope (Angular spectrum evaluation tool). Grades will be listed as "Ideal/excellent through to Promotional/Poor".

Diamond/s under long wave ultraviolet light fluoresces: MB, MY, Nil.

Insurance Replacement Appraisal \$4,975.00

continued on next page...